

Monthly Electricity Statistics

May 2010

The IEA's Monthly Electricity Statistics provides timely electricity production and trade data for all member countries of the Organization for Economic Cooperation and Development (OECD). It aims to report as up-to-date and consistent information as possible for the last four months. It also provides previous annual data and year-to-date indicators.

Data are reported at the individual country level as well as in organisational and regional groupings. These groupings include: OECD Total, OECD Europe, OECD North America, OECD Pacific and IEA Total. The units are terawatt-hours (TWh) for the groupings and gigawatt-hours (GWh) for the individual countries.

Highlights

May 2010 vs. May 2009

Total OECD production reached 798.5 TWh, an increase of 4.2% or 32.4 TWh over the same month last year.

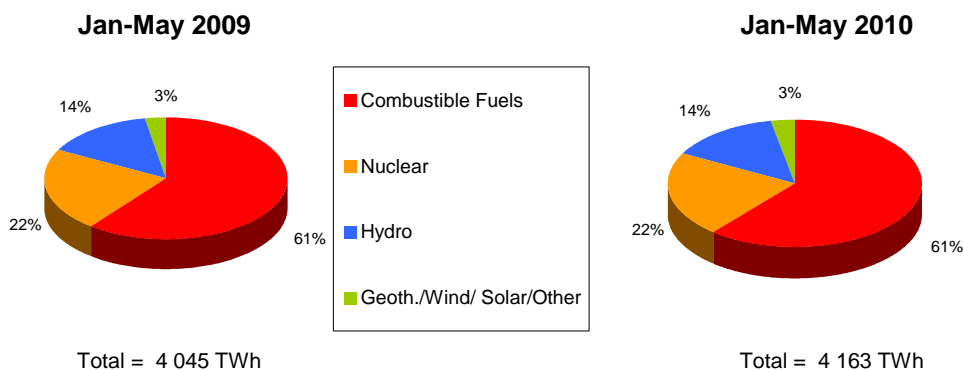
- Production from Hydro rose by 18.1% to 14.1 TWh in OECD Pacific.
- Production from Geoth./Wind/Solar/Other rose by 20.1% to 27.6 TWh in OECD Total.
- In OECD North America, imports fell by 12.9% to 4.8 TWh and exports fell by 14.9% to 4.9 TWh.

January - May 2010 vs. the same period in 2009

Total OECD production reached 4 162.6 TWh, an increase of 2.9% or 117.7 TWh over the same period last year.

- Production from Hydro rose by 13.9% to 56.4 TWh in OECD Pacific.
- Production from Nuclear rose by 5.9% to 174.3 TWh in OECD Pacific.
- Production from Geoth./Wind/Solar/Other rose by 17.2% to 72.5 TWh in OECD Europe.

OECD Electricity Production by Fuel Type Year-to-Date Comparison



CONTENTS

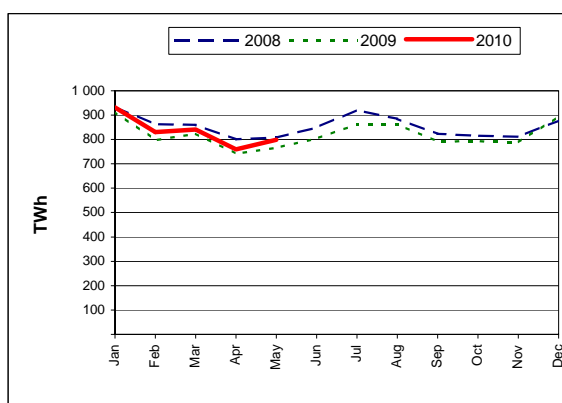
	Page #
ORGANISATIONAL AND REGIONAL TABLES	
OECD Total	1
OECD Europe	2
OECD North America	3
OECD Pacific	4
IEA Total	5
COUNTRY TABLES	
Australia	6
Austria	7
Belgium	8
Canada	9
Czech Republic	10
Denmark	11
Finland	12
France	13
Germany	14
Greece	15
Hungary	16
Iceland	17
Ireland	18
Italy	19
Japan	20
Korea	21
Luxembourg	22
Mexico	23
Netherlands	24
New Zealand	25
Norway	26
Poland	27
Portugal	28
Slovak Republic	29
Spain	30
Sweden	31
Switzerland	32
Turkey	33
United Kingdom	34
United States	35
PRINCIPLES AND DEFINITIONS	36

OECD Total

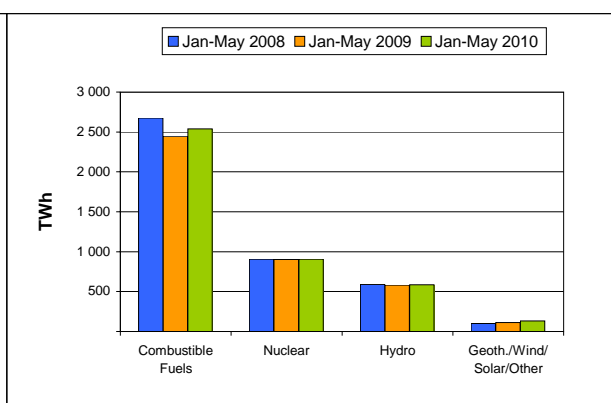
	TWh							
	May-10	May-09	The last 3 months			Year-to-Date		Past Year
		% change	Feb-10	Mar-10	Apr-10	Jan-May 2010	% change	2009
+ Combustible Fuels	478.2	5.8%	513.8	509.8	456.9	2 538.8	3.7%	6 098
+ Nuclear	172.9	2.6%	180.6	185.3	167.7	907.5	0.6%	2 134
+ Hydro	119.7	-2.3%	113.5	118.6	106.8	585.2	0.8%	1 336
+ Geoth./Wind/Solar/Other	27.6	20.1%	23.0	27.6	28.2	131.1	15.3%	276
= Indigenous Production	798.5	4.2%	831.0	841.4	759.5	4 162.6	2.9%	9 844
+ Imports	30.5	5.1%	31.3	35.0	30.7	161.1	4.5%	372
- Exports	27.5	-0.9%	30.6	33.1	29.6	153.6	3.6%	360
= Electricity Supplied	801.5	4.4%	831.6	843.2	760.6	4 170.1	2.9%	9 856

- Electricity production was 798.5 TWh in May 2010.
 - This was higher by 32.4 TWh, or 4.2%, compared to May 2009.
 - This was an increase of 38.9 TWh, or 5.1%, compared to the previous month.
 - Hydro production showed the most significant percentage change compared to the previous month with an increase of 12.1%, or 12.9 TWh.
- Total production for the year-to-date was 4 162.6 TWh. Comparing this to the same period last year shows that:
 - Total production was higher by 117.7 TWh, or 2.9%.
 - Geoth./Wind/Solar/Other production showed the largest percentage change by energy source, being 15.3% higher.
 - Trade volume increased by 12.3 TWh, or 4.1%.

Electricity Production Compared to Previous Year



'Year to Date' Comparison of Production by Fuel Type



COUNTRY NOTES:

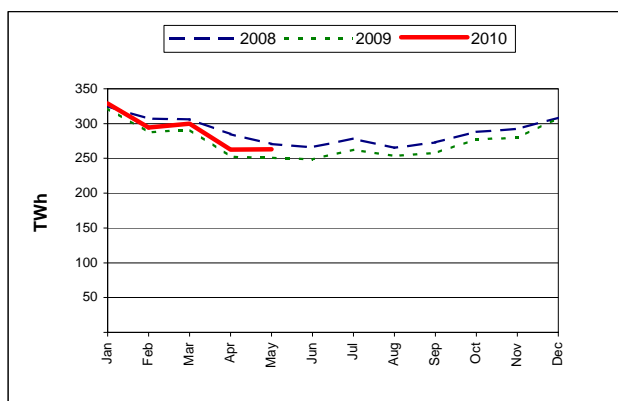
- OECD includes Australia, Austria, Belgium, Canada, the Czech Republic, Denmark, Finland, France, Germany, Greece, Hungary, Iceland, Ireland, Italy, Japan, Korea, Luxembourg, Mexico, the Netherlands, New Zealand, Portugal, Spain, Sweden, Norway, Poland, the Slovak Republic, Switzerland, Turkey, the United Kingdom and the United States.

OECD Europe

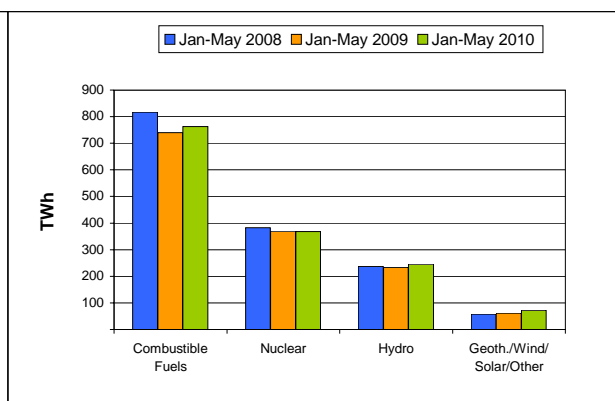
	TWh							
	May-10	May-09 % change	The last 3 months			Year-to-Date		Past Year 2009
			Feb-10	Mar-10	Apr-10	Jan-May 2010	% change	
+ Combustible Fuels	132.2	5.5%	159.1	157.9	135.2	762.6	3.1%	1 778
+ Nuclear	66.5	2.9%	73.5	77.1	69.2	367.8	-0.5%	830
+ Hydro	49.9	3.3%	47.6	49.7	43.9	245.9	5.5%	528
+ Geoth./Wind/Solar/Other	14.6	13.6%	14.2	15.2	14.4	72.5	17.2%	157
= Indigenous Production	263.2	4.8%	294.3	300.0	262.7	1 448.9	3.2%	3 293
+ Imports	25.7	9.3%	25.8	29.3	25.5	133.5	5.4%	302
- Exports	22.6	2.8%	25.0	27.1	24.3	125.2	4.7%	287
= Electricity Supplied	266.3	5.4%	295.1	302.1	263.9	1 457.3	3.2%	3 308

- Electricity production was 263.2 TWh in May 2010.
 - This was higher by 12.1 TWh, or 4.8%, compared to May 2009.
 - This was an increase of 0.5 TWh, or 0.2%, compared to the previous month.
 - Hydro production showed the most significant percentage change compared to the previous month with an increase of 13.7%, or 6.0 TWh.
- Total production for the year-to-date was 1 448.9 TWh. Comparing this to the same period last year shows that:
 - Total production was higher by 44.5 TWh, or 3.2%.
 - Geoth./Wind/Solar/Other production showed the largest percentage change by energy source, being 17.2% higher.
 - Trade volume increased by 12.5 TWh, or 5.1%.

Electricity Production Compared to Previous Year



'Year to Date' Comparison of Production by Fuel Type



COUNTRY NOTES:

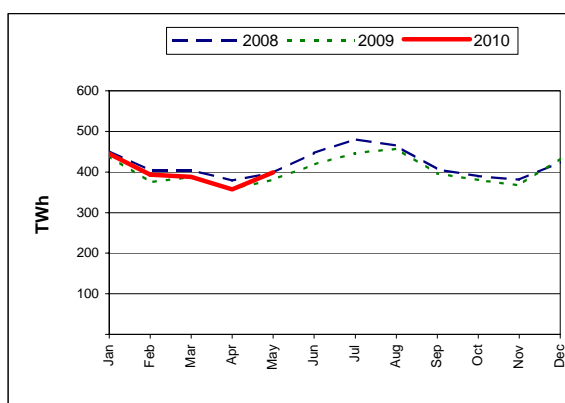
- OECD Europe includes Austria, Belgium, the Czech Republic, Denmark, Finland, France, Germany, Greece, Hungary, Iceland, Ireland, Italy, Luxembourg, the Netherlands, Portugal, Spain, Sweden, Norway, Poland, the Slovak Republic, Switzerland, Turkey and the United Kingdom.

OECD North America

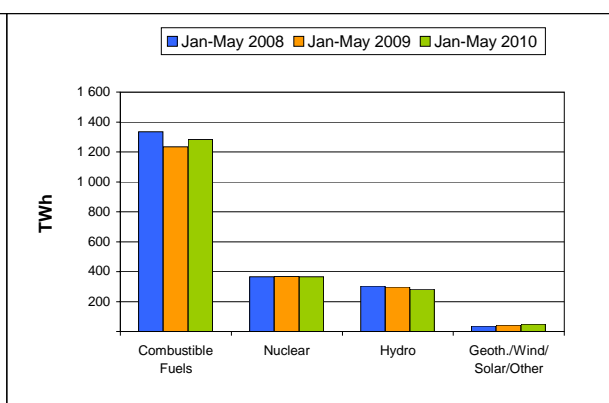
	TWh							
	May-10	May-09	The last 3 months			Year-to-Date		Past Year
		% change	Feb-10	Mar-10	Apr-10	Jan-May 2010	% change	2009
+ Combustible Fuels	259.2	7.8%	255.5	248.0	230.6	1 284.4	4.1%	3 165
+ Nuclear	73.0	3.2%	73.4	73.0	64.5	365.3	-0.8%	895
+ Hydro	55.7	-10.5%	57.3	56.6	50.2	282.9	-5.0%	685
+ Geoth./Wind/Solar/Other	11.2	31.5%	7.3	10.6	11.9	49.6	13.3%	99
= Indigenous Production	399.0	4.5%	393.5	388.1	357.1	1 982.2	2.0%	4 844
+ Imports	4.8	-12.9%	5.4	5.7	5.2	27.6	0.4%	71
- Exports	4.9	-14.9%	5.6	6.0	5.3	28.5	-0.9%	73
= Electricity Supplied	399.0	4.5%	393.3	387.7	356.9	1 981.4	2.0%	4 841

- Electricity production was 399.0 TWh in May 2010.
 - This was higher by 17.1 TWh, or 4.5%, compared to May 2009.
 - This was an increase of 41.9 TWh, or 11.7%, compared to the previous month.
 - Nuclear production showed the most significant percentage change compared to the previous month with an increase of 13.2%, or 8.5 TWh.
- Total production for the year-to-date was 1 982.2 TWh. Comparing this to the same period last year shows that:
 - Total production was higher by 39.1 TWh, or 2%.
 - Geoth./Wind/Solar/Other production showed the largest percentage change by energy source, being 13.3% higher.
 - Trade volume decreased by 0.1 TWh, or 0.2%.

Electricity Production Compared to Previous Year



'Year to Date' Comparison of Production by Fuel Type



COUNTRY NOTES:

- OECD North America includes Canada, Mexico and the United States.

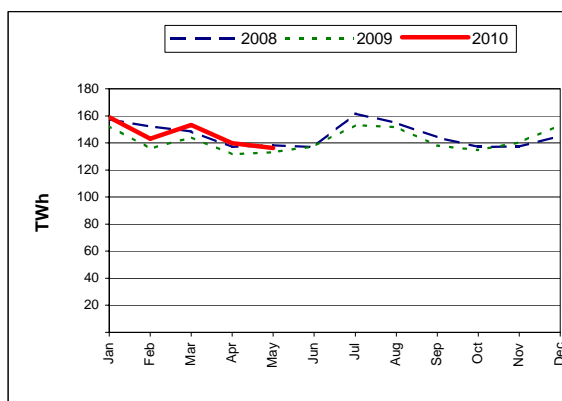
OECD Pacific

	TWh							
	May-10	May-09 % change	The last 3 months			Year-to-Date		Past Year 2009
			Feb-10	Mar-10	Apr-10	Jan-May 2010	% change	
+ Combustible Fuels	86.9	0.7%	99.2	104.0	91.2	491.8	3.5%	1 155
+ Nuclear	33.4	0.7%	33.7	35.2	34.0	174.3	5.9%	408
+ Hydro	14.1	18.1%	8.7	12.3	12.7	56.4	13.9%	123
+ Geoth./Wind/Solar/Other	1.9	12.3%	1.6	1.9	1.8	8.9	11.8%	20
= Indigenous Production	136.3	2.4%	143.2	153.4	139.8	731.5	4.9%	1 707
+ Imports	0.0	0.0%	0.0	0.0	0.0	0.0	0.0%	0
- Exports	0.0	0.0%	0.0	0.0	0.0	0.0	0.0%	0
= Electricity Supplied	136.3	2.4%	143.2	153.4	139.8	731.5	4.9%	1 707

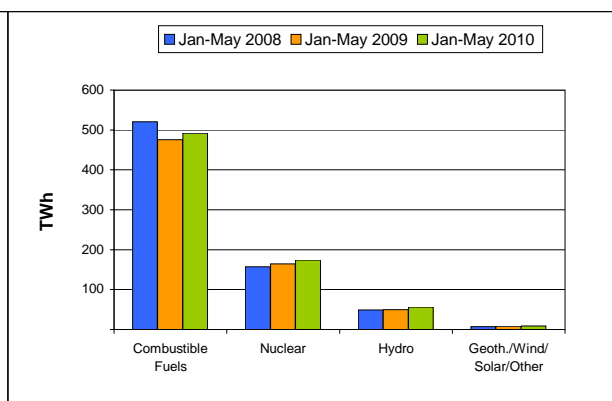
- Electricity production was 136.3 TWh in May 2010.
 - This was higher by 3.2 TWh, or 2.4%, compared to May 2009.
 - This was a decrease of 3.5 TWh, or 2.5%, compared to the previous month.
 - Hydro production showed the most significant percentage change compared to the previous month with an increase of 11.1%, or 1.4 TWh.

- Total production for the year-to-date was 731.5 TWh. Comparing this to the same period last year shows that:
 - Total production was higher by 34.1 TWh, or 4.9%.
 - Hydro production showed the largest percentage change by energy source, being 13.9% higher.

Electricity Production Compared to Previous Year



'Year to Date' Comparison of Production by Fuel Type



COUNTRY NOTES:

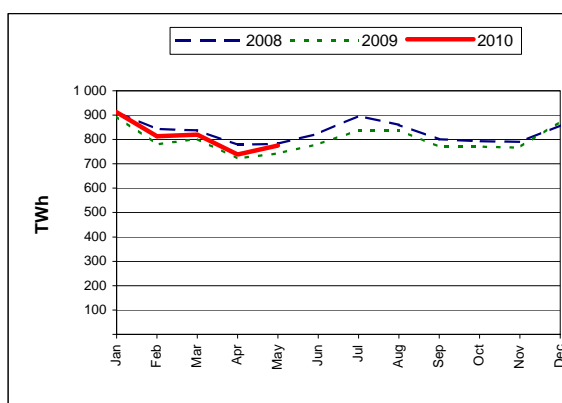
- OECD Pacific includes Australia, Japan, Korea and New Zealand.

IEA Total

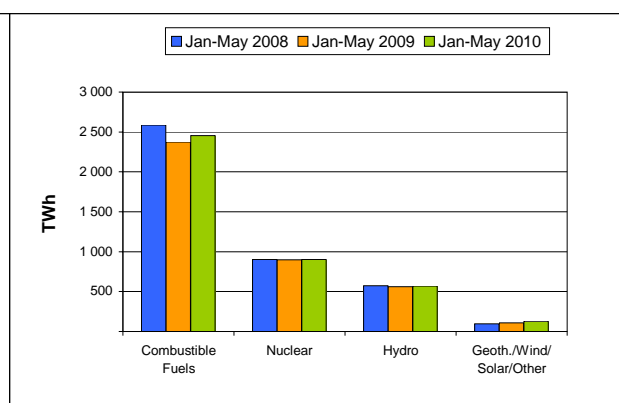
	TWh							
	May-10	May-09	The last 3 months			Year-to-Date		Past Year
		% change	Feb-10	Mar-10	Apr-10	Jan-May 2010	% change	2009
+ Combustible Fuels	459.3	5.7%	500.0	493.4	439.6	2 456.5	3.5%	5 901
+ Nuclear	172.4	2.5%	179.8	184.6	167.2	904.0	0.6%	2 124
+ Hydro	116.3	-2.4%	110.9	115.5	103.9	570.7	1.3%	1 298
+ Geoth./Wind/Solar/Other	26.7	21.1%	22.2	26.7	27.3	126.6	16.1%	265
= Indigenous Production	774.7	4.1%	812.8	820.2	738.0	4 057.8	2.9%	9 587
+ Imports	30.5	5.2%	31.3	35.0	30.7	161.1	4.5%	372
- Exports	27.4	-1.1%	30.5	33.0	29.4	152.9	3.6%	359
= Electricity Supplied	777.8	4.4%	813.6	822.2	739.3	4 065.9	2.9%	9 601

- Electricity production was 774.7 TWh in May 2010.
 - This was higher by 30.8 TWh, or 4.1%, compared to May 2009.
 - This was an increase of 36.7 TWh, or 5%, compared to the previous month.
 - Hydro production showed the most significant percentage change compared to the previous month with an increase of 11.9%, or 12.3 TWh.
- Total production for the year-to-date was 4 057.8 TWh. Comparing this to the same period last year shows that:
 - Total production was higher by 113.9 TWh, or 2.9%.
 - Geoth./Wind/Solar/Other production showed the largest percentage change by energy source, being 16.1% higher.
 - Trade volume increased by 12.3 TWh, or 4.1%.

Electricity Production Compared to Previous Year



'Year to Date' Comparison of Production by Fuel Type



COUNTRY NOTES:

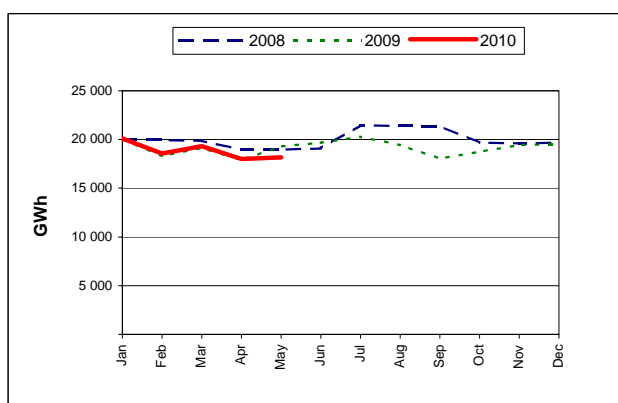
- IEA includes all OECD countries except Iceland and Mexico.

AUSTRALIA

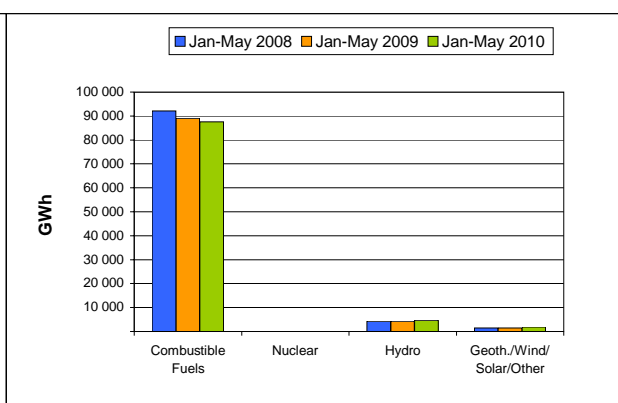
	GWh							
	May-10	May-09 % change	The last 3 months			Year-to-Date		Past Year 2009
			Feb-10	Mar-10	Apr-10	Jan-May 2010	% change	
+ Combustible Fuels	16 652	-7.6%	17 298	18 170	16 679	87 611	-1.6%	214 457
+ Nuclear	0	0.0%	0	0	0	0	0.0%	0
+ Hydro	1 166	19.7%	906	769	959	4 731	11.3%	11 626
+ Geoth./Wind/Solar/Other	358	12.6%	367	364	361	1 821	20.6%	3 962
= Indigenous Production	18 176	-5.9%	18 571	19 303	17 999	94 163	-0.6%	230 045
+ Imports	0	0.0%	0	0	0	0	0.0%	0
- Exports	0	0.0%	0	0	0	0	0.0%	0
= Electricity Supplied	18 176	-5.9%	18 571	19 303	17 999	94 163	-0.6%	230 045

- Electricity production was 18 176 GWh in May 2010.
 - This was lower by 1 140 GWh, or 5.9%, compared to May 2009.
 - This was an increase of 177 GWh, or 1%, compared to the previous month.
 - Hydro production showed the most significant percentage change compared to the previous month with an increase of 21.6%, or 207 GWh.
- Total production for the year-to-date was 94 163 GWh. Comparing this to the same period last year shows that:
 - Total production was lower by 608 GWh, or 0.6%.
 - Geoth./Wind/Solar/Other production showed the largest percentage change by energy source, being 20.6% higher.

Electricity Production Compared to Previous Year



'Year to Date' Comparison of Production by Fuel Type



COUNTRY NOTES:

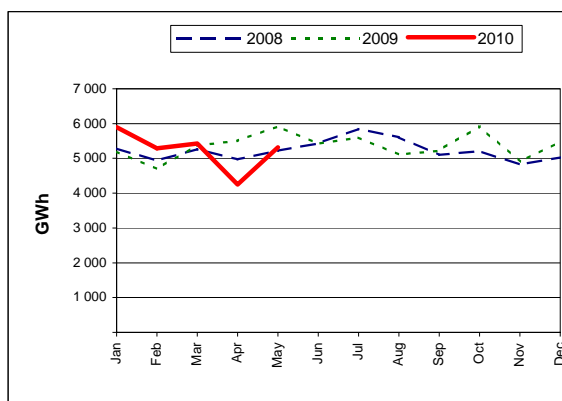
- Excludes the overseas territories.
- Geoth./Wind/Solar/Other production is estimated by the IEA Secretariat.
- Monthly total net production is estimated based on quarterly data prior to January 2009.
- The production data for May 2010 are estimated based on the National Electricity Market Report from the Energy Supply Association of Australia.

AUSTRIA

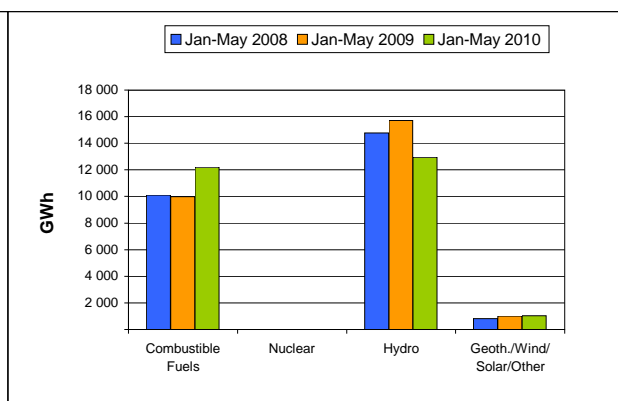
	GWh							
	May-10	May-09 % change	The last 3 months			Year-to-Date		Past Year 2009
			Feb-10	Mar-10	Apr-10	Jan-May 2010	% change	
+ Combustible Fuels	1 403	22.2%	3 105	2 567	1 759	12 210	22.3%	22 958
+ Nuclear	0	0.0%	0	0	0	0	0.0%	0
+ Hydro	3 646	-19.5%	2 016	2 660	2 283	12 949	-17.6%	38 943
+ Geoth./Wind/Solar/Other	269	10.7%	171	203	207	1 029	2.0%	2 491
= Indigenous Production	5 318	-10.2%	5 292	5 430	4 249	26 188	-1.9%	64 392
+ Imports	1 185	77.9%	2 112	2 156	2 262	9 953	19.9%	19 538
- Exports	1 370	-22.4%	1 409	1 408	1 146	6 893	-6.5%	18 762
= Electricity Supplied	5 133	6.4%	5 995	6 178	5 365	29 248	5.8%	65 168

- Electricity production was 5 318 GWh in May 2010.
 - This was lower by 603 GWh, or 10.2%, compared to May 2009.
 - This was an increase of 1 069 GWh, or 25.2%, compared to the previous month.
 - Hydro production showed the most significant percentage change compared to the previous month with an increase of 59.7%, or 1 363 GWh.
- Total production for the year-to-date was 26 188 GWh. Comparing this to the same period last year shows that:
 - Total production was lower by 516 GWh, or 1.9%.
 - Combustible Fuels production showed the largest percentage change by energy source, being 22.3% higher.
 - Trade volume increased by 1 179 GWh, or 7.5%.

Electricity Production Compared to Previous Year



'Year to Date' Comparison of Production by Fuel Type



COUNTRY NOTES:

BELGIUM

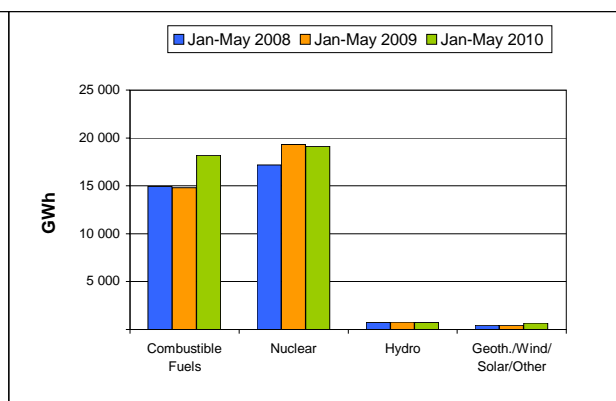
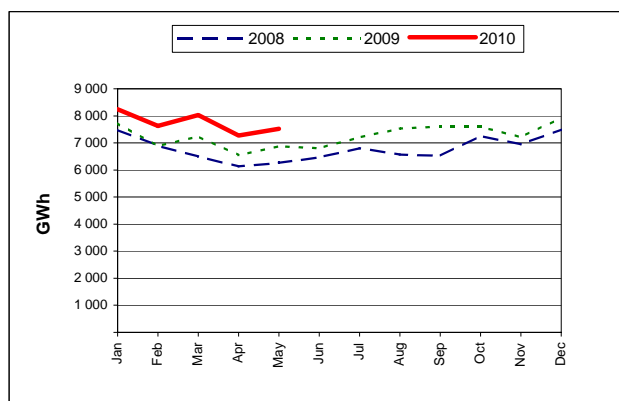
GWh

	May-10	May-09 % change	The last 3 months			Year-to-Date		Past Year 2009
			Feb-10	Mar-10	Apr-10	Jan-May 2010	% change	
+ Combustible Fuels	3 292	13.9%	3 753	3 567	3 340	18 177	22.7%	39 222 e
+ Nuclear	3 966	5.9%	3 578	4 139	3 657	19 126	-1.0%	44 924
+ Hydro	131	-12.7%	150	157	143	730	-4.5%	1 749
+ Geoth./Wind/Solar/Other	133	29.1%	147	173	136	677	62.0%	1 355 e
= Indigenous Production	7 522	9.2%	7 628	8 036	7 276	38 710	9.6%	87 250 e
+ Imports	853	30.4%	916	929	760	4 686	14.7%	9 487
- Exports	1 156	29.2%	948	1 040	821	4 977	46.2%	11 321
= Electricity Supplied	7 219	8.6%	7 596	7 925	7 215	38 419	6.8%	85 416 e

- Electricity production was 7 522 GWh in May 2010.
 - This was higher by 636 GWh, or 9.2%, compared to May 2009.
 - This was an increase of 246 GWh, or 3.4%, compared to the previous month.
 - Nuclear production showed the most significant percentage change compared to the previous month with an increase of 8.4%, or 309 GWh.
- Total production for the year-to-date was 38 710 GWh. Comparing this to the same period last year shows that:
 - Total production was higher by 3 406 GWh, or 9.6%.
 - Geoth./Wind/Solar/Other production showed the largest percentage change by energy source, being 62% higher.
 - Trade volume increased by 2 174 GWh, or 29%.

Electricity Production Compared to Previous Year

'Year to Date' Comparison of Production by Fuel Type



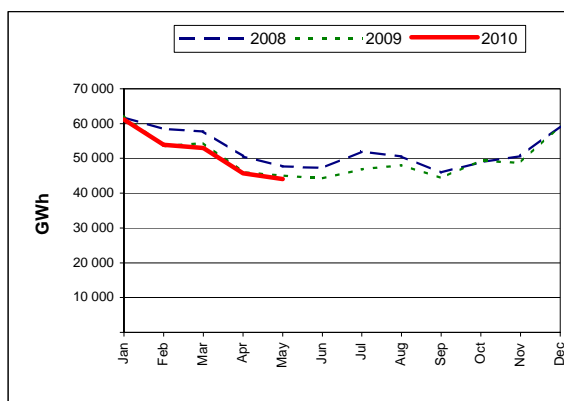
COUNTRY NOTES:

CANADA

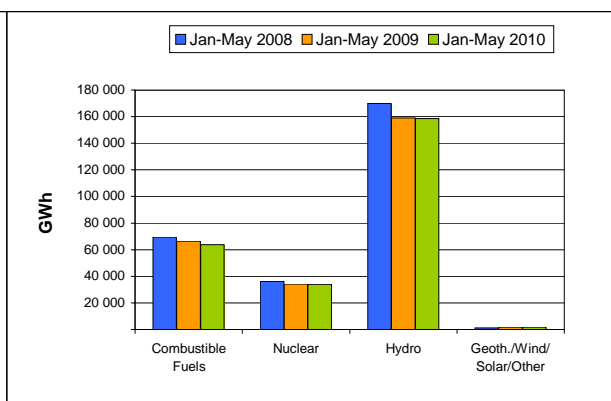
	GWh							
	May-10	May-09 % change	The last 3 months			Year-to-Date		Past Year 2009
			Feb-10	Mar-10	Apr-10	Jan-May 2010	% change	
+ Combustible Fuels	11 608	0.8%	13 044	12 872	10 929	63 698	-4.2%	150 209 e
+ Nuclear	5 595	15.9%	7 065	7 370	6 156	33 864	-1.1%	85 313
+ Hydro	26 530	-6.5%	33 459	32 442	28 254	158 586	-0.3%	363 388
+ Geoth./Wind/Solar/Other	349	7.4%	313	325	337	1 625	-2.4%	3 808
= Indigenous Production	44 082	-2.1%	53 881	53 009	45 676	257 773	-1.4%	602 718 e
+ Imports	1 739	27.9%	1 019	1 305	1 274	6 502	-26.1%	18 155
- Exports	3 033	-29.7%	4 448	4 516	3 881	21 168	6.9%	53 712
= Electricity Supplied	42 788	1.7%	50 452	49 798	43 069	243 107	-2.9%	567 161 e

- Electricity production was 44 082 GWh in May 2010.
 - This was lower by 949 GWh, or 2.1%, compared to May 2009.
 - This was a decrease of 1 594 GWh, or 3.5%, compared to the previous month.
 - Nuclear production showed the most significant percentage change compared to the previous month with a decrease of 9.1%, or 561 GWh.
- Total production for the year-to-date was 257 773 GWh. Comparing this to the same period last year shows that:
 - Total production was lower by 3 594 GWh, or 1.4%.
 - Combustible Fuels production showed the largest percentage change by energy source, being 4.2% lower.
 - Trade volume decreased by 933 GWh, or 3.3%.

Electricity Production Compared to Previous Year



'Year to Date' Comparison of Production by Fuel Type



COUNTRY NOTES:

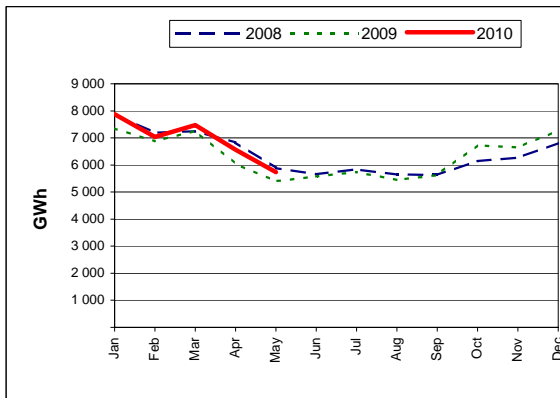
- Geoth./Wind/Solar/Other production is estimated by the IEA Secretariat.

CZECH REPUBLIC

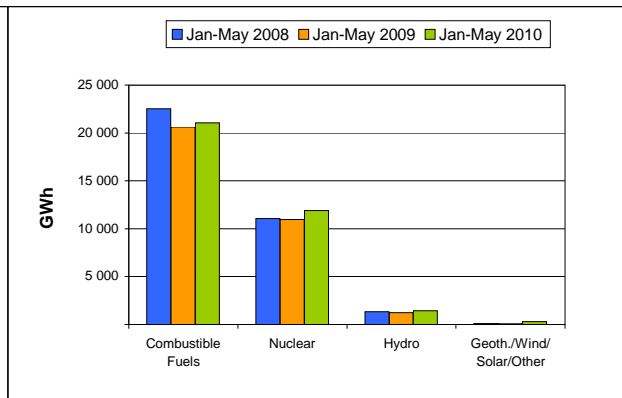
	GWh							
	May-10	May-09 % change	The last 3 months			Year-to-Date		Past Year 2009
			Feb-10	Mar-10	Apr-10	Jan-May 2010	% change	
+ Combustible Fuels	3 445	7.2%	4 325	4 678	3 704	21 056	2.1%	47 078
+ Nuclear	1 929	-0.8%	2 444	2 398	2 437	11 886	8.4%	25 608
+ Hydro	285	28.4%	227	313	331	1 428	15.4%	2 969
+ Geoth./Wind/Solar/Other	82	182.8%	39	87	87	314	116.6%	379
= Indigenous Production	5 741	6.1%	7 035	7 476	6 559	34 684	5.2%	76 034
+ Imports	520	5.7%	718	581	520	2 969	-13.2%	8 585
- Exports	1 216	-4.5%	2 027	2 147	1 933	9 441	1.4%	22 230
= Electricity Supplied	5 045	9.0%	5 726	5 910	5 146	28 212	4.2%	62 389

- Electricity production was 5 741 GWh in May 2010.
 - This was higher by 332 GWh, or 6.1%, compared to May 2009.
 - This was a decrease of 818 GWh, or 12.5%, compared to the previous month.
 - Nuclear production showed the most significant percentage change compared to the previous month with a decrease of 20.8%, or 508 GWh.
- Total production for the year-to-date was 34 684 GWh. Comparing this to the same period last year shows that:
 - Total production was higher by 1 728 GWh, or 5.2%.
 - Geoth./Wind/Solar/Other production showed the largest percentage change by energy source, being 116.6% higher.
 - Trade volume decreased by 322 GWh, or 2.5%.

Electricity Production Compared to Previous Year



'Year to Date' Comparison of Production by Fuel Type



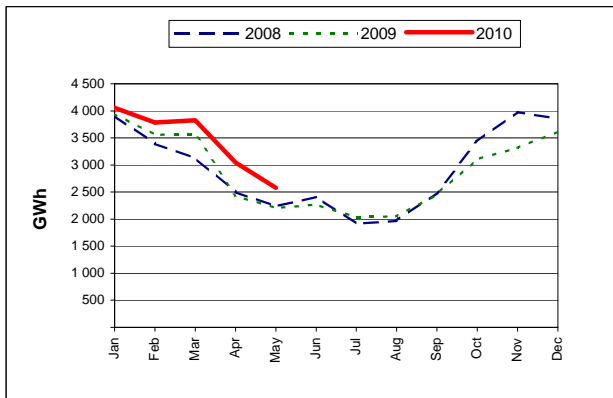
COUNTRY NOTES:

DENMARK

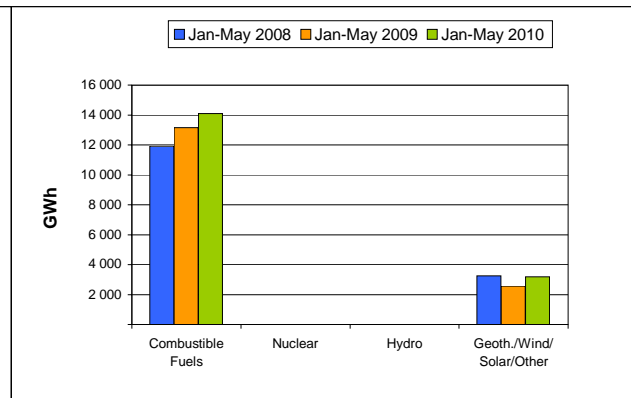
	GWh							
	May-10	May-09 % change	The last 3 months			Year-to-Date		Past Year 2009
			Feb-10	Mar-10	Apr-10	Jan-May 2010	% change	
+ Combustible Fuels	1 970	20.2%	3 266	3 147	2 413	14 088	7.2%	27 843
+ Nuclear	0	0.0%	0	0	0	0	0.0%	0
+ Hydro	2	100.0%	1	3	2	10	25.0%	18
+ Geoth./Wind/Solar/Other	607	7.6%	517	677	633	3 196	24.7%	6 721
= Indigenous Production	2 579	17.0%	3 784	3 827	3 048	17 294	10.0%	34 582
+ Imports	961	-16.0%	717	846	626	3 904	-16.9%	11 209
- Exports	789	15.4%	1 375	1 458	939	5 850	7.7%	10 875
= Electricity Supplied	2 751	3.3%	3 126	3 215	2 735	15 348	2.5%	34 916

- Electricity production was 2 579 GWh in May 2010.
 - This was higher by 375 GWh, or 17%, compared to May 2009.
 - This was a decrease of 469 GWh, or 15.4%, compared to the previous month.
 - Combustible Fuels production showed the most significant percentage change compared to the previous month with a decrease of 18.4%, or 443 GWh.
- Total production for the year-to-date was 17 294 GWh. Comparing this to the same period last year shows that:
 - Total production was higher by 1 579 GWh, or 10%.
 - Hydro production showed the largest percentage change by energy source, being 25% higher.
 - Trade volume decreased by 373 GWh, or 3.7%.

Electricity Production Compared to Previous Year



'Year to Date' Comparison of Production by Fuel Type



COUNTRY NOTES:

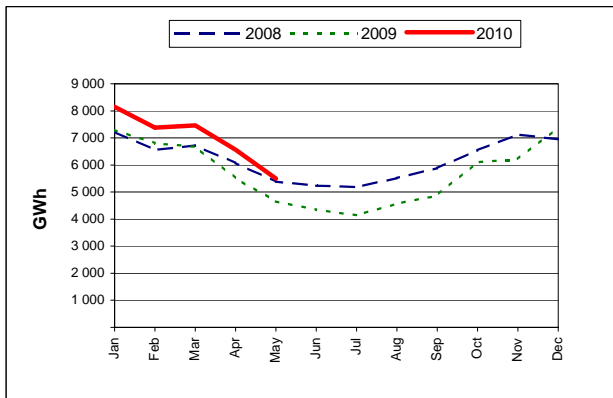
- Excludes Greenland and the Faroe Islands.

FINLAND

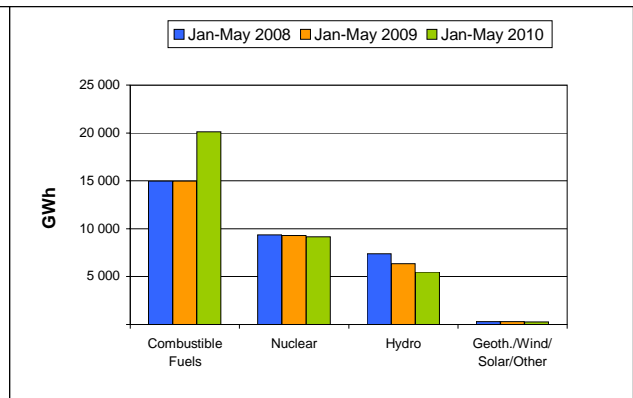
	GWh							
	May-10	May-09 % change	The last 3 months			Year-to-Date		Past Year 2009
			Feb-10	Mar-10	Apr-10	Jan-May 2010	% change	
+ Combustible Fuels	2 627	48.7%	4 551	4 478	3 498	20 116	34.3%	32 755
+ Nuclear	1 345	-8.6%	1 825	2 021	1 953	9 165	-1.5%	22 588
+ Hydro	1 480	9.1%	946	893	1 059	5 480	-13.9%	12 546
+ Geoth./Wind/Solar/Other	42	-27.6%	53	72	53	284	-7.5%	734
= Indigenous Production	5 494	18.0%	7 375	7 464	6 563	35 045	13.2%	68 623
+ Imports	1 361	-3.5%	1 202	1 328	1 174	6 456	-0.5%	15 459
- Exports	396	388.9%	465	1 003	922	3 158	76.4%	3 374
= Electricity Supplied	6 459	8.0%	8 112	7 789	6 815	38 343	7.6%	80 708

- Electricity production was 5 494 GWh in May 2010.
 - This was higher by 840 GWh, or 18%, compared to May 2009.
 - This was a decrease of 1 069 GWh, or 16.3%, compared to the previous month.
 - Hydro production showed the most significant percentage change compared to the previous month with an increase of 39.8%, or 421 GWh.
- Total production for the year-to-date was 35 045 GWh. Comparing this to the same period last year shows that:
 - Total production was higher by 4 093 GWh, or 13.2%.
 - Combustible Fuels production showed the largest percentage change by energy source, being 34.3% higher.
 - Trade volume increased by 1 336 GWh, or 16.1%.

Electricity Production Compared to Previous Year



'Year to Date' Comparison of Production by Fuel Type



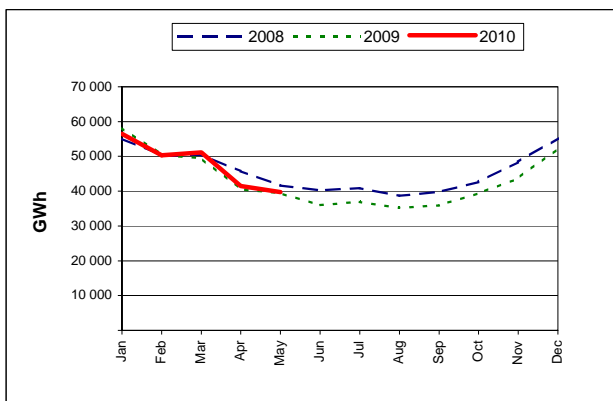
COUNTRY NOTES:

FRANCE

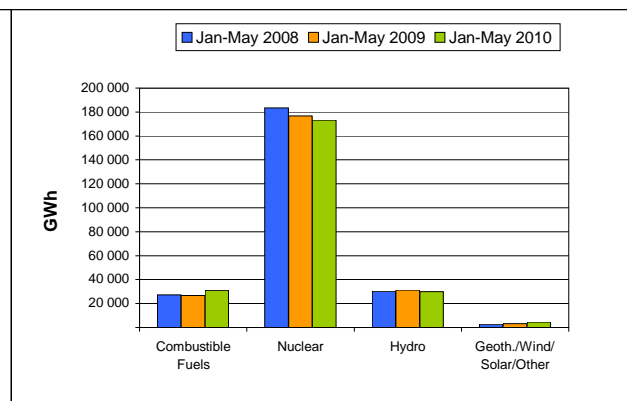
	GWh							
	May-10	May-09 % change	The last 3 months			Year-to-Date		Past Year 2009
			Feb-10	Mar-10	Apr-10	Jan-May 2010	% change	
+ Combustible Fuels	3 115	53.5%	7 206	7 735	3 728	31 042	15.5%	58 467
+ Nuclear	29 377	-1.7%	36 325	35 991	31 300	173 313	-2.0%	390 072
+ Hydro	6 365	-8.9%	5 743	6 116	5 662	30 055	-4.0%	60 939
+ Geoth./Wind/Solar/Other	835	40.1%	1 047	1 262	780	4 663	46.1%	8 399
= Indigenous Production	39 692	0.5%	50 321	51 104	41 470	239 073	0.4%	517 877
+ Imports	1 428	98.6%	2 279	2 207	1 361	10 428	96.9%	19 213
- Exports	3 545	-32.9%	3 318	4 306	3 931	17 784	-23.2%	44 914
= Electricity Supplied	37 575	7.6%	49 282	49 005	38 900	231 717	5.2%	492 176

- Electricity production was 39 692 GWh in May 2010.
 - This was higher by 188 GWh, or 0.5%, compared to May 2009.
 - This was a decrease of 1 778 GWh, or 4.3%, compared to the previous month.
 - Combustible Fuels production showed the most significant percentage change compared to the previous month with a decrease of 16.4%, or 613 GWh.
- Total production for the year-to-date was 239 073 GWh. Comparing this to the same period last year shows that:
 - Total production was higher by 842 GWh, or 0.4%.
 - Geoth./Wind/Solar/Other production showed the largest percentage change by energy source, being 46.1% higher.
 - Trade volume decreased by 243 GWh, or 0.9%.

Electricity Production Compared to Previous Year



'Year to Date' Comparison of Production by Fuel Type



COUNTRY NOTES:

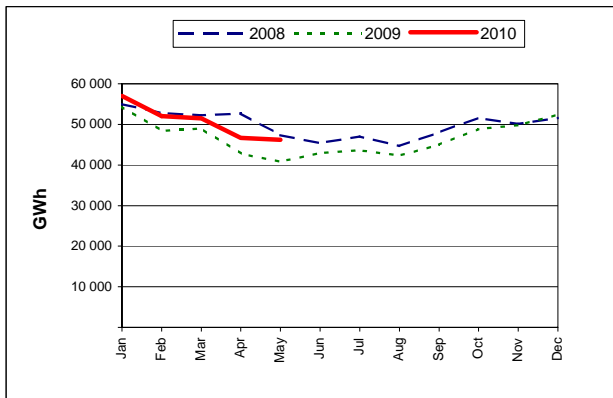
- Includes Monaco, but excludes the French overseas territories Guadeloupe, Martinique, Guyane, Reunion, St.-Pierre and Miquelon, New Caledonia and French Polynesia.
- The share of electricity production from independent power producers is estimated by the IEA Secretariat.

GERMANY

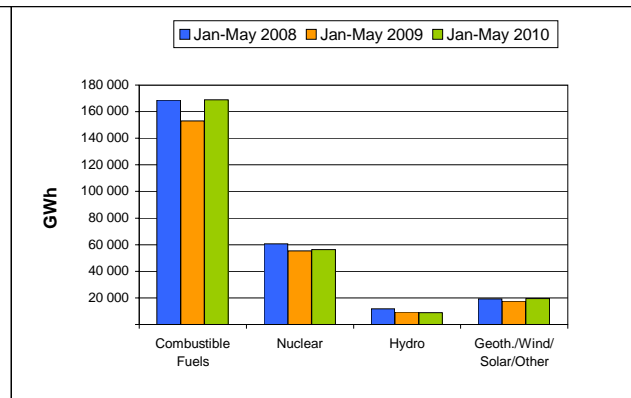
	GWh							
	May-10	May-09	The last 3 months			Year-to-Date		Past Year
		% change	Feb-10	Mar-10	Apr-10	Jan-May 2010	% change	2009
+ Combustible Fuels	29 704	19.8%	35 507	34 057	30 840	168 892	10.4%	366 312 e
+ Nuclear	10 739	6.2%	11 047	11 753	10 233	56 332	1.7%	127 940
+ Hydro	1 852	-19.8%	1 618	1 828	1 707	8 793	-7.2%	22 375
+ Geoth./Wind/Solar/Other	3 885	7.2%	3 874	3 878	3 881	19 388	10.1%	44 027
= Indigenous Production	46 180	13.1%	52 046	51 516	46 661	253 405	7.6%	560 654 e
+ Imports	3 393	-21.3%	2 773	3 738	2 960	15 666	-19.3%	41 854
- Exports	3 976	30.1%	5 716	5 988	5 256	27 138	17.5%	54 134
= Electricity Supplied	45 597	8.3%	49 103	49 266	44 365	241 933	4.4%	548 374 e

- Electricity production was 46 180 GWh in May 2010.
 - This was higher by 5 334 GWh, or 13.1%, compared to May 2009.
 - This was a decrease of 481 GWh, or 1%, compared to the previous month.
 - Hydro production showed the most significant percentage change compared to the previous month with an increase of 8.5%, or 145 GWh.
- Total production for the year-to-date was 253 405 GWh. Comparing this to the same period last year shows that:
 - Total production was higher by 17 883 GWh, or 7.6%.
 - Combustible Fuels production showed the largest percentage change by energy source, being 10.4% higher.
 - Trade volume increased by 315 GWh, or 0.7%.

Electricity Production Compared to Previous Year



'Year to Date' Comparison of Production by Fuel Type



COUNTRY NOTES:

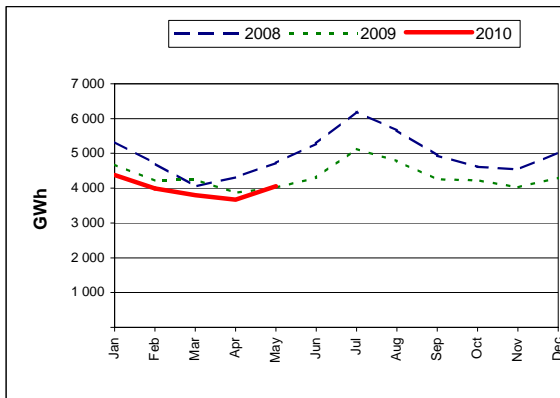
- Net production is estimated from monthly submission of gross production.
- Geoth./Wind/Solar/Other production is estimated by the IEA Secretariat.

GREECE

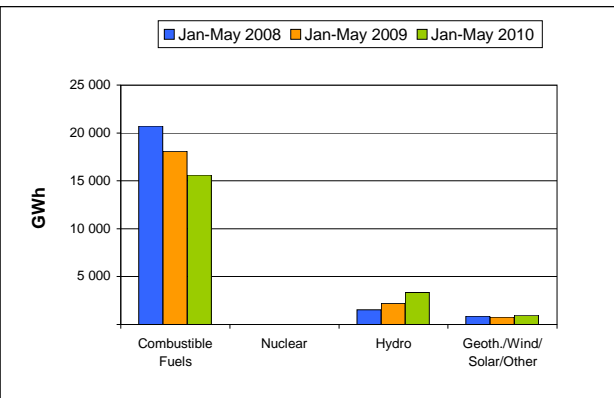
	GWh							
	May-10	May-09 % change	The last 3 months			Year-to-Date		Past Year 2009
			Feb-10	Mar-10	Apr-10	Jan-May 2010	% change	
+ Combustible Fuels	3 143	-11.0%	3 079	2 950	2 906	15 608	-13.7%	44 486 e
+ Nuclear	0	0.0%	0	0	0	0	0.0%	0
+ Hydro	713	120.7%	724	656	565	3 329	51.0%	5 623
+ Geoth./Wind/Solar/Other	202	21.7%	187	192	197	960	24.4%	1 989
= Indigenous Production	4 058	0.9%	3 990	3 798	3 668	19 897	-5.5%	52 098 e
+ Imports	537	106.5%	608	1 219	759	3 479	13.1%	7 602
- Exports	101	-30.3%	812	188	493	2 058	26.7%	3 231
= Electricity Supplied	4 494	8.7%	3 786	4 829	3 934	21 318	-5.3%	56 469 e

- Electricity production was 4 058 GWh in May 2010.
 - This was higher by 38 GWh, or 0.9%, compared to May 2009.
 - This was an increase of 390 GWh, or 10.6%, compared to the previous month.
 - Hydro production showed the most significant percentage change compared to the previous month with an increase of 26.2%, or 148 GWh.
- Total production for the year-to-date was 19 897 GWh. Comparing this to the same period last year shows that:
 - Total production was lower by 1 156 GWh, or 5.5%.
 - Hydro production showed the largest percentage change by energy source, being 51% higher.
 - Trade volume increased by 838 GWh, or 17.8%.

Electricity Production Compared to Previous Year



'Year to Date' Comparison of Production by Fuel Type



COUNTRY NOTES:

- Production and trade data for January - May 2010 are estimated by the IEA Secretariat.

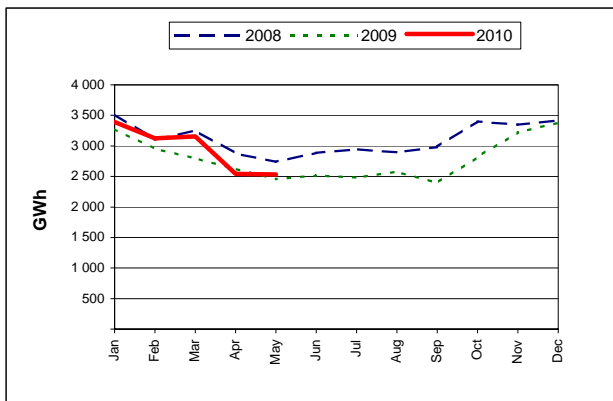
HUNGARY

GWh

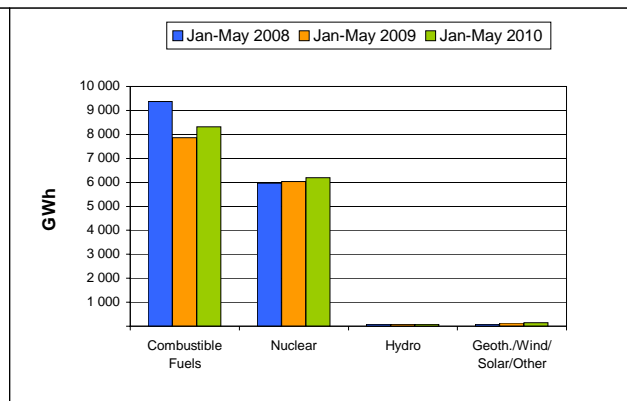
	May-10	May-09 % change	The last 3 months			Year-to-Date		Past Year 2009
			Feb-10	Mar-10	Apr-10	Jan-May 2010	% change	
+ Combustible Fuels	1 414	1.7%	1 778	1 815	1 408	8 317	5.7%	18 432
+ Nuclear	1 070	5.5%	1 302	1 300	1 089	6 199	2.8%	14 529
+ Hydro	14	-33.3%	18	14	14	80	-7.0%	226
+ Geoth./Wind/Solar/Other	32	3.2%	26	29	30	149	12.0%	325
= Indigenous Production	2 530	3.0%	3 124	3 158	2 541	14 745	4.4%	33 512
+ Imports	779	10.7%	655	641	790	3 548	-18.5%	10 703
- Exports	170	22.3%	484	384	237	1 793	-20.3%	5 187
= Electricity Supplied	3 139	3.9%	3 295	3 415	3 094	16 500	1.7%	39 028

- Electricity production was 2 530 GWh in May 2010.
 - This was higher by 73 GWh, or 3%, compared to May 2009.
 - This was a decrease of 11 GWh, or 0.4%, compared to the previous month.
 - Geoth./Wind/Solar/Other production showed the most significant percentage change compared to the previous month with an increase of 6.7%, or 2 GWh.
- Total production for the year-to-date was 14 745 GWh. Comparing this to the same period last year shows that:
 - Total production was higher by 628 GWh, or 4.4%.
 - Geoth./Wind/Solar/Other production showed the largest percentage change by energy source, being 12% higher.
 - Trade volume decreased by 1 265 GWh, or 19.1%.

Electricity Production Compared to Previous Year



'Year to Date' Comparison of Production by Fuel Type



COUNTRY NOTES:

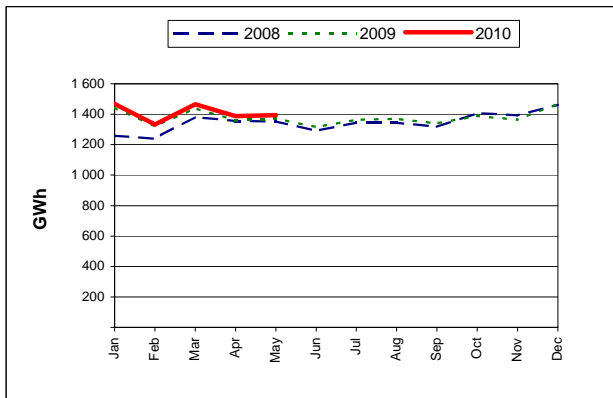
- Net production is estimated from monthly submission of gross production.

ICELAND

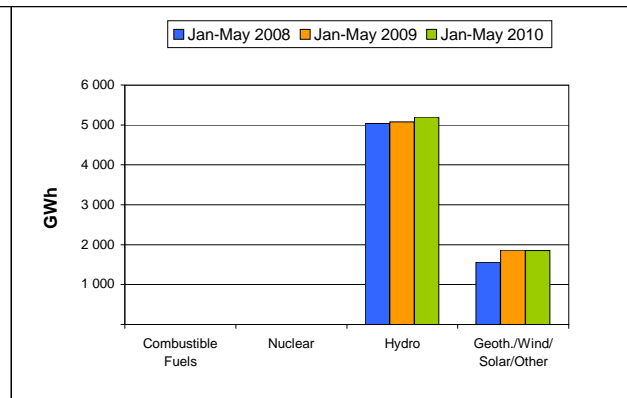
	GWh							
	May-10	May-09 % change	The last 3 months			Year-to-Date		Past Year 2009
			Feb-10	Mar-10	Apr-10	Jan-May 2010	% change	
+ Combustible Fuels	0	0.0%	0	0	0	0	-100.0%	3
+ Nuclear	0	0.0%	0	0	0	0	0.0%	0
+ Hydro	1 044	1.2%	984	1 077	1 013	5 198	2.4%	12 156
+ Geoth./Wind/Solar/Other	350	2.6%	350	388	374	1 849	-0.6%	4 397
= Indigenous Production	1 394	1.5%	1 334	1 465	1 387	7 047	1.6%	16 556
+ Imports	0	0.0%	0	0	0	0	0.0%	0
- Exports	0	0.0%	0	0	0	0	0.0%	0
= Electricity Supplied	1 394	1.5%	1 334	1 465	1 387	7 047	1.6%	16 556

- Electricity production was 1 394 GWh in May 2010.
 - This was higher by 21 GWh, or 1.5%, compared to May 2009.
 - This was an increase of 7 GWh, or 0.5%, compared to the previous month.
 - Geoth./Wind/Solar/Other production showed the most significant percentage change compared to the previous month with a decrease of 6.4%, or 24 GWh.
- Total production for the year-to-date was 7 047 GWh. Comparing this to the same period last year shows that:
 - Total production was higher by 108 GWh, or 1.6%.
 - Combustible Fuels production showed the largest percentage change by energy source, being 100% lower.

Electricity Production Compared to Previous Year



'Year to Date' Comparison of Production by Fuel Type



COUNTRY NOTES:

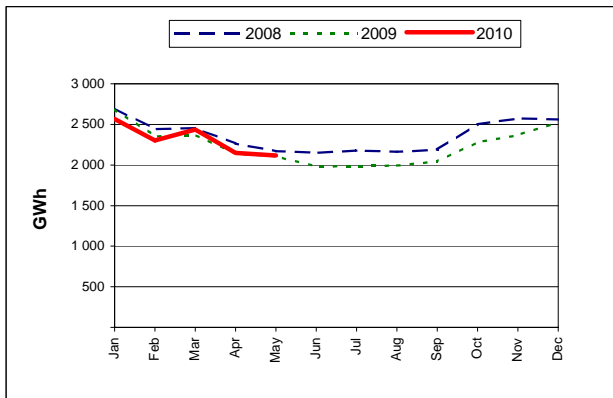
- Net production is estimated from monthly submission of gross production.

IRELAND

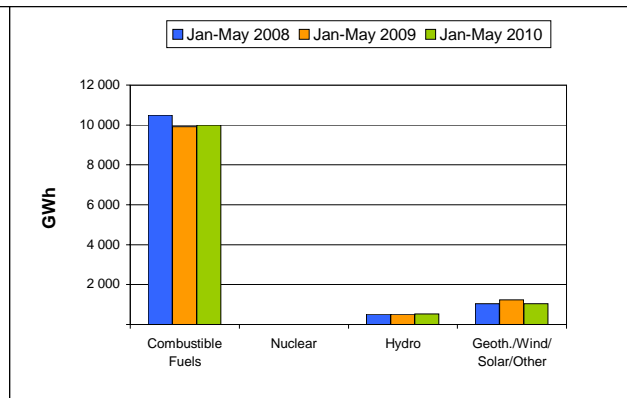
	GWh							
	May-10	May-09 % change	The last 3 months			Year-to-Date		Past Year 2009
			Feb-10	Mar-10	Apr-10	Jan-May 2010	% change	
+ Combustible Fuels	1 738	0.6%	2 065	2 131	1 870	9 993	0.8%	22 653
+ Nuclear	0	0.0%	0	0	0	0	0.0%	0
+ Hydro	136	28.3%	91	62	107	529	2.3%	1 244
+ Geoth./Wind/Solar/Other	241	-13.0%	148	245	172	1 050	-14.6%	2 956
= Indigenous Production	2 115	0.2%	2 304	2 438	2 149	11 572	-0.8%	26 853
+ Imports	59	-41.0%	108	74	51	430	13.5%	939
- Exports	10	100.0%	8	13	19	54	-40.7%	177
= Electricity Supplied	2 164	-1.9%	2 404	2 499	2 181	11 948	0.0%	27 615

- Electricity production was 2 115 GWh in May 2010.
 - This was higher by 5 GWh, or 0.2%, compared to May 2009.
 - This was a decrease of 34 GWh, or 1.6%, compared to the previous month.
 - Geoth./Wind/Solar/Other production showed the most significant percentage change compared to the previous month with an increase of 40.1%, or 69 GWh.
- Total production for the year-to-date was 11 572 GWh. Comparing this to the same period last year shows that:
 - Total production was lower by 91 GWh, or 0.8%.
 - Geoth./Wind/Solar/Other production showed the largest percentage change by energy source, being 14.6% lower.
 - Trade volume increased by 14 GWh, or 3%.

Electricity Production Compared to Previous Year



'Year to Date' Comparison of Production by Fuel Type



COUNTRY NOTES:

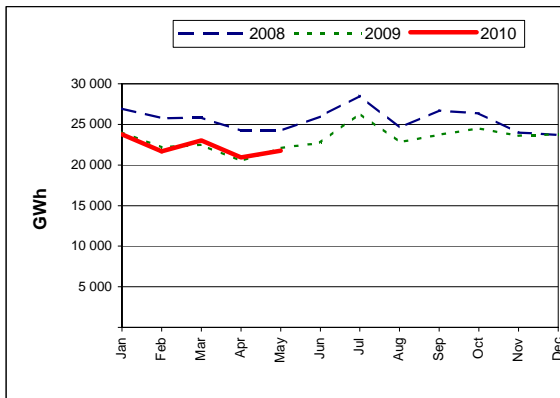
- Production and trade data for May 2010 are estimated by the IEA Secretariat.

ITALY

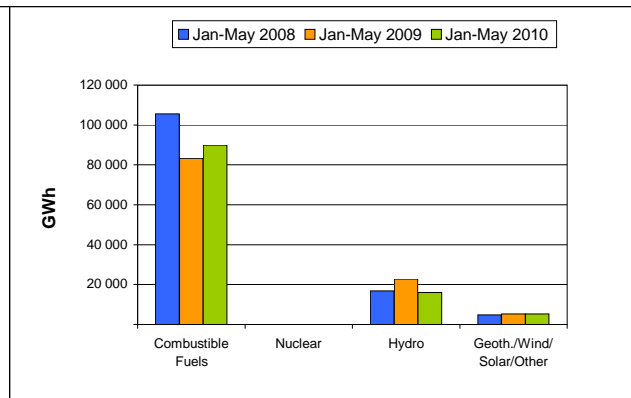
	GWh							
	May-10	May-09 % change	The last 3 months			Year-to-Date		Past Year 2009
			Feb-10	Mar-10	Apr-10	Jan-May 2010	% change	
+ Combustible Fuels	16 637	9.4%	18 028	18 879	16 656	89 766	7.8%	215 115
+ Nuclear	0	0.0%	0	0	0	0	0.0%	0
+ Hydro	4 014	-30.7%	2 679	3 050	3 191	16 033	-29.6%	51 095
+ Geoth./Wind/Solar/Other	1 094	-1.9%	994	1 084	1 084	5 345	0.4%	12 741
= Indigenous Production	21 745	-1.7%	21 701	23 013	20 931	111 144	-0.2%	278 951
+ Imports	4 126	6.0%	4 039	4 541	4 041	20 384	-2.9%	46 570
- Exports	157	15.4%	135	154	174	857	12.3%	2 121
= Electricity Supplied	25 714	-0.6%	25 605	27 400	24 798	130 671	-0.7%	323 400

- Electricity production was 21 745 GWh in May 2010.
 - This was lower by 375 GWh, or 1.7%, compared to May 2009.
 - This was an increase of 814 GWh, or 3.9%, compared to the previous month.
 - Hydro production showed the most significant percentage change compared to the previous month with an increase of 25.8%, or 823 GWh.
- Total production for the year-to-date was 111 144 GWh. Comparing this to the same period last year shows that:
 - Total production was lower by 212 GWh, or 0.2%.
 - Hydro production showed the largest percentage change by energy source, being 29.6% lower.
 - Trade volume decreased by 521 GWh, or 2.4%.

Electricity Production Compared to Previous Year



'Year to Date' Comparison of Production by Fuel Type



COUNTRY NOTES:

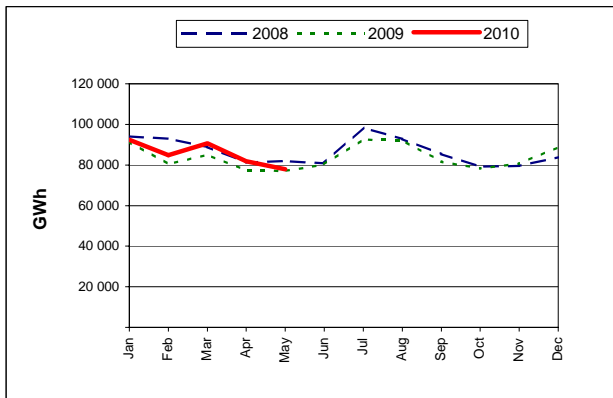
- Includes San Marino and the Vatican.
- Net production is estimated from monthly submission of gross production.
- Production and trade data for May 2010 are estimated by the IEA Secretariat.

JAPAN

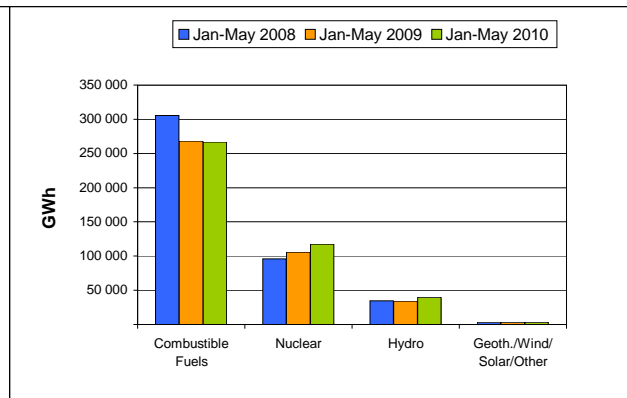
	GWh							
	May-10	May-09 % change	The last 3 months			Year-to-Date		Past Year 2009
			Feb-10	Mar-10	Apr-10	Jan-May 2010	% change	
+ Combustible Fuels	44 848	-5.0%	55 835	56 131	48 495	266 545	-0.5%	649 075
+ Nuclear	22 079	5.9%	22 765	24 383	23 098	117 600	11.2%	267 090
+ Hydro	10 292	22.6%	5 560	9 357	9 623	39 999	16.7%	81 865
+ Geoth./Wind/Solar/Other	728	6.6%	651	731	667	3 460	1.1%	8 332
= Indigenous Production	77 947	1.1%	84 811	90 602	81 883	427 604	3.9%	1 006 362
+ Imports	0	0.0%	0	0	0	0	0.0%	0
- Exports	0	0.0%	0	0	0	0	0.0%	0
= Electricity Supplied	77 947	1.1%	84 811	90 602	81 883	427 604	3.9%	1 006 362

- Electricity production was 77 947 GWh in May 2010.
 - This was higher by 815 GWh, or 1.1%, compared to May 2009.
 - This was a decrease of 3 936 GWh, or 4.8%, compared to the previous month.
 - Geoth./Wind/Solar/Other production showed the most significant percentage change compared to the previous month with an increase of 9.1%, or 61 GWh.
- Total production for the year-to-date was 427 604 GWh. Comparing this to the same period last year shows that:
 - Total production was higher by 16 174 GWh, or 3.9%.
 - Hydro production showed the largest percentage change by energy source, being 16.7% higher.

Electricity Production Compared to Previous Year



'Year to Date' Comparison of Production by Fuel Type



COUNTRY NOTES:

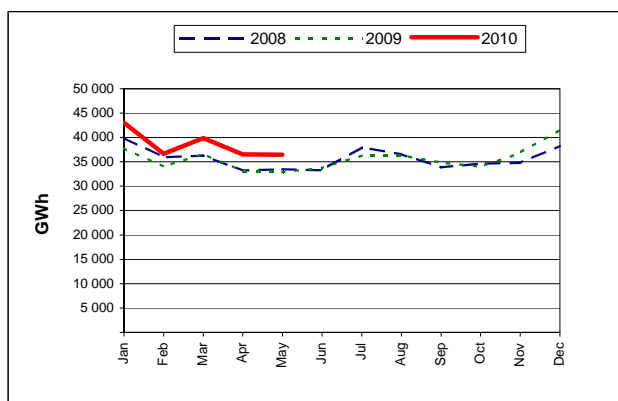
- Net production is estimated based on monthly submission for main producers.
- The breakdown of supplementary production sources is calculated annually by the IEA Secretariat.

KOREA

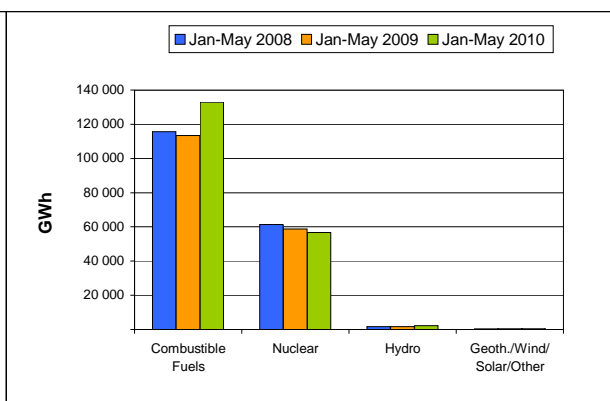
	GWh							
	May-10	May-09 % change	The last 3 months			Year-to-Date		Past Year 2009
			Feb-10	Mar-10	Apr-10	Jan-May 2010	% change	
+ Combustible Fuels	24 378	22.2%	25 198	28 476	24 983	132 833	17.0%	279 948
+ Nuclear	11 354	-8.1%	10 925	10 839	10 937	56 720	-3.5%	141 201
+ Hydro	571	17.2%	376	412	428	2 189	32.2%	5 565
+ Geoth./Wind/Solar/Other	174	21.7%	162	165	171	829	20.3%	1 740
= Indigenous Production	36 477	10.8%	36 661	39 892	36 519	192 571	10.3%	428 454
+ Imports	0	0.0%	0	0	0	0	0.0%	0
- Exports	0	0.0%	0	0	0	0	0.0%	0
= Electricity Supplied	36 477	10.8%	36 661	39 892	36 519	192 571	10.3%	428 454

- Electricity production was 36 477 GWh in May 2010.
 - This was higher by 3 545 GWh, or 10.8%, compared to May 2009.
 - This was a decrease of 42 GWh, or 0.1%, compared to the previous month.
 - Hydro production showed the most significant percentage change compared to the previous month with an increase of 33.4%, or 143 GWh.
- Total production for the year-to-date was 192 571 GWh. Comparing this to the same period last year shows that:
 - Total production was higher by 17 921 GWh, or 10.3%.
 - Hydro production showed the largest percentage change by energy source, being 32.2% higher.

Electricity Production Compared to Previous Year



'Year to Date' Comparison of Production by Fuel Type



COUNTRY NOTES:

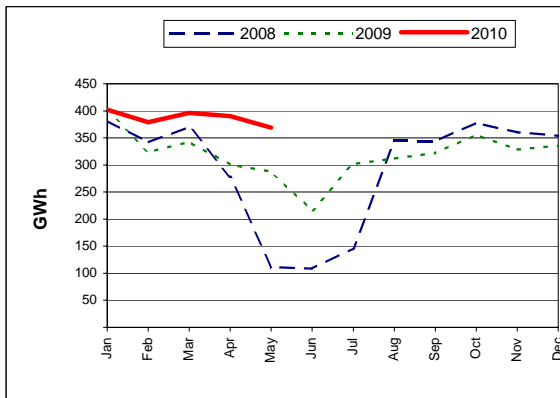
- The share of electricity production from autoproducers is estimated by the IEA Secretariat.
- Net production is estimated from monthly submission of gross production.
- Geoth./Wind/Solar/Other production is estimated by the IEA Secretariat.
- Production data for May 2010 are estimated by the IEA Secretariat.

LUXEMBOURG

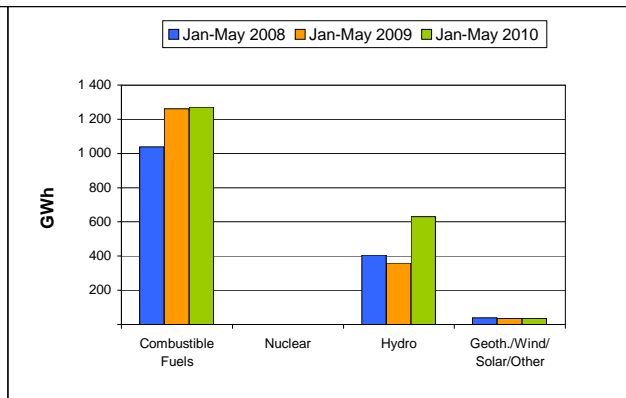
	GWh							
	May-10	May-09	The last 3 months			Year-to-Date		Past Year
		% change	Feb-10	Mar-10	Apr-10	Jan-May 2010	% change	2009
+ Combustible Fuels	235	2.2%	255	268	244	1 271	0.7%	2 928
+ Nuclear	0	0.0%	0	0	0	0	0.0%	0
+ Hydro	129	143.4%	116	117	139	630	75.0%	816
+ Geoth./Wind/Solar/Other	5	0.0%	8	11	7	35	0.0%	85
= Indigenous Production	369	28.1%	379	396	390	1 936	16.8%	3 829
+ Imports	646	38.6%	573	614	625	3 096	25.9%	6 023
- Exports	183	-2.1%	257	261	272	1 249	13.1%	2 605
= Electricity Supplied	832	46.7%	695	749	743	3 783	25.6%	7 247

- Electricity production was 369 GWh in May 2010.
 - This was higher by 81 GWh, or 28.1%, compared to May 2009.
 - This was a decrease of 21 GWh, or 5.4%, compared to the previous month.
 - Geoth./Wind/Solar/Other production showed the most significant percentage change compared to the previous month with a decrease of 28.6%, or 2 GWh.
- Total production for the year-to-date was 1 936 GWh. Comparing this to the same period last year shows that:
 - Total production was higher by 279 GWh, or 16.8%.
 - Hydro production showed the largest percentage change by energy source, being 75% higher.
 - Trade volume increased by 781 GWh, or 21.9%.

Electricity Production Compared to Previous Year



'Year to Date' Comparison of Production by Fuel Type



COUNTRY NOTES:

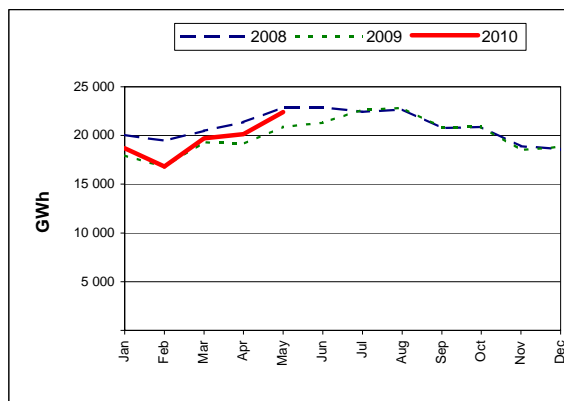
- Production and trade data for May 2010 are estimated by the IEA Secretariat.

MEXICO

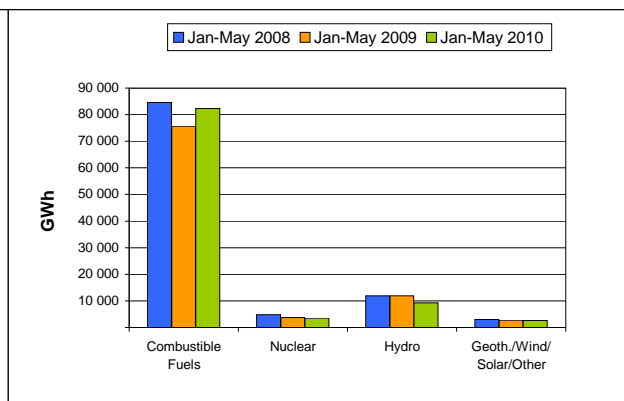
	GWh							
	May-10	May-09 % change	The last 3 months			Year-to-Date		Past Year 2009
			Feb-10	Mar-10	Apr-10	Jan-May 2010	% change	
+ Combustible Fuels	18 955	8.3%	13 843	16 461	17 291	82 336	8.8%	197 250
+ Nuclear	481	6.7%	858	694	466	3 496	-5.7%	10 155
+ Hydro	2 421	2.3%	1 618	2 030	1 869	9 261	-22.4%	25 984
+ Geoth./Wind/Solar/Other	534	-6.2%	501	542	508	2 663	-4.4%	6 683
= Indigenous Production	22 391	7.2%	16 820	19 727	20 134	97 756	3.9%	240 072
+ Imports	40	-36.5%	13	17	9	91	-40.1%	345
- Exports	97	94.0%	112	163	164	677	19.4%	1 249
= Electricity Supplied	22 334	6.8%	16 721	19 581	19 979	97 170	3.7%	239 168

- Electricity production was 22 391 GWh in May 2010.
 - This was higher by 1 500 GWh, or 7.2%, compared to May 2009.
 - This was an increase of 2 257 GWh, or 11.2%, compared to the previous month.
 - Hydro production showed the most significant percentage change compared to the previous month with an increase of 29.5%, or 552 GWh.
- Total production for the year-to-date was 97 756 GWh. Comparing this to the same period last year shows that:
 - Total production was higher by 3 639 GWh, or 3.9%.
 - Hydro production showed the largest percentage change by energy source, being 22.4% lower.
 - Trade volume increased by 49 GWh, or 6.8%.

Electricity Production Compared to Previous Year



'Year to Date' Comparison of Production by Fuel Type



COUNTRY NOTES:

- The share of electricity production from autoproducers is estimated by the IEA Secretariat.

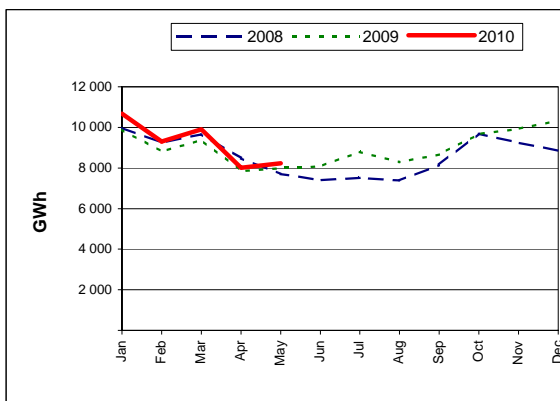
NETHERLANDS

GWh

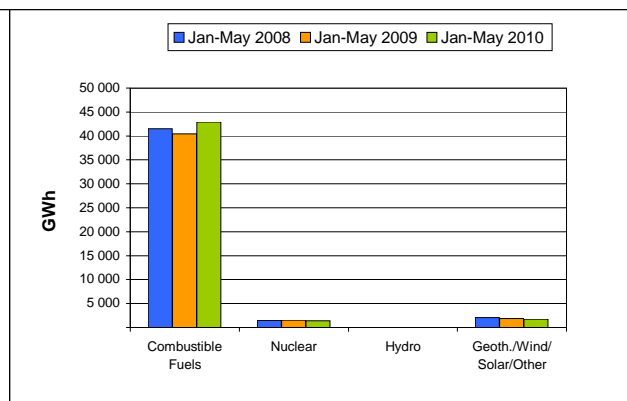
	May-10	May-09 % change	The last 3 months			Year-to-Date		Past Year 2009
			Feb-10	Mar-10	Apr-10	Jan-May 2010	% change	
+ Combustible Fuels	7 626	5.9%	8 587	9 117	7 566	42 905	6.1%	98 911
+ Nuclear	295	-17.6%	328	352	132	1 428	-8.5%	3 988
+ Hydro	8	-27.3%	9	14	12	54	-5.3%	97
+ Geoth./Wind/Solar/Other	310	-26.0%	385	423	300	1 756	-6.9%	4 742
= Indigenous Production	8 239	3.1%	9 309	9 906	8 010	46 143	5.0%	107 738
+ Imports	1 578	9.1%	668	688	1 148	4 950	-31.5%	15 452
- Exports	1 069	133.4%	917	1 178	627	5 219	75.5%	10 562
= Electricity Supplied	8 748	-2.6%	9 060	9 416	8 531	45 874	-4.8%	112 628

- Electricity production was 8 239 GWh in May 2010.
 - This was higher by 250 GWh, or 3.1%, compared to May 2009.
 - This was an increase of 229 GWh, or 2.9%, compared to the previous month.
 - Nuclear production showed the most significant percentage change compared to the previous month with an increase of 123.5%, or 163 GWh.
- Total production for the year-to-date was 46 143 GWh. Comparing this to the same period last year shows that:
 - Total production was higher by 2 210 GWh, or 5%.
 - Nuclear production showed the largest percentage change by energy source, being 8.5% lower.
 - Trade volume decreased by 29 GWh, or 0.3%.

Electricity Production Compared to Previous Year



'Year to Date' Comparison of Production by Fuel Type



COUNTRY NOTES:

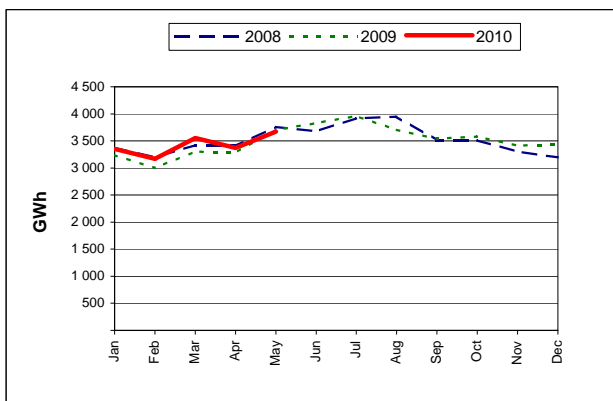
- Excludes Suriname and the Netherlands Antilles.

NEW ZEALAND

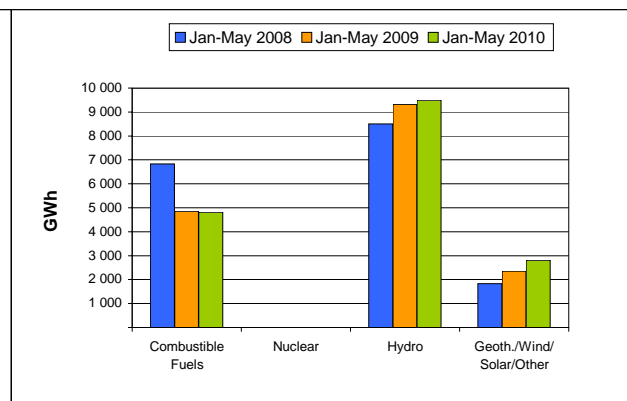
	GWh							
	May-10	May-09 % change	The last 3 months			Year-to-Date		Past Year 2009
			Feb-10	Mar-10	Apr-10	Jan-May 2010	% change	
+ Combustible Fuels	972	-10.2%	864	1 178	1 029	4 812	-0.9%	11 991
+ Nuclear	0	0.0%	0	0	0	0	0.0%	0
+ Hydro	2 092	-0.7%	1 877	1 729	1 704	9 492	1.9%	23 963
+ Geoth./Wind/Solar/Other	606	17.0%	431	648	635	2 813	19.3%	6 055
= Indigenous Production	3 670	-1.0%	3 172	3 555	3 368	17 117	3.5%	42 009
+ Imports	0	0.0%	0	0	0	0	0.0%	0
- Exports	0	0.0%	0	0	0	0	0.0%	0
= Electricity Supplied	3 670	-1.0%	3 172	3 555	3 368	17 117	3.5%	42 009

- Electricity production was 3 670 GWh in May 2010.
 - This was lower by 37 GWh, or 1%, compared to May 2009.
 - This was an increase of 302 GWh, or 9%, compared to the previous month.
 - Hydro production showed the most significant percentage change compared to the previous month with an increase of 22.8%, or 388 GWh.
- Total production for the year-to-date was 17 117 GWh. Comparing this to the same period last year shows that:
 - Total production was higher by 583 GWh, or 3.5%.
 - Geoth./Wind/Solar/Other production showed the largest percentage change by energy source, being 19.3% higher.

Electricity Production Compared to Previous Year



'Year to Date' Comparison of Production by Fuel Type



COUNTRY NOTES:

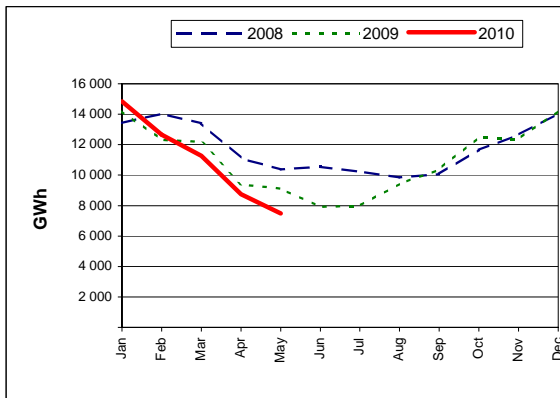
- Monthly production is estimated by the IEA Secretariat with submission by the National Administration, which covers output from major generators including state-owned enterprises (about 80-85% of New Zealand's generation).

NORWAY

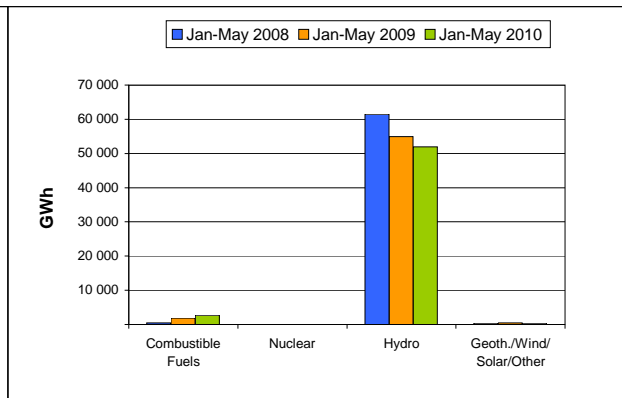
	GWh							
	May-10	May-09 % change	The last 3 months			Year-to-Date		Past Year 2009
			Feb-10	Mar-10	Apr-10	Jan-May 2010	% change	
+ Combustible Fuels	519	-7.5%	513	619	587	2 714	47.6%	4 632
+ Nuclear	0	0.0%	0	0	0	0	0.0%	0
+ Hydro	6 923	-18.3%	12 079	10 562	8 078	51 909	-5.5%	126 344
+ Geoth./Wind/Solar/Other	46	-40.3%	71	91	71	380	-22.9%	1 057
= Indigenous Production	7 488	-17.9%	12 663	11 272	8 736	55 003	-3.9%	132 033
+ Imports	2 076	237.6%	937	1 447	1 657	7 072	127.3%	5 651
- Exports	285	-67.6%	412	151	119	1 770	-59.1%	14 635
= Electricity Supplied	9 279	4.8%	13 188	12 568	10 274	60 305	7.6%	123 049

- Electricity production was 7 488 GWh in May 2010.
 - This was lower by 1 628 GWh, or 17.9%, compared to May 2009.
 - This was a decrease of 1 248 GWh, or 14.3%, compared to the previous month.
 - Geoth./Wind/Solar/Other production showed the most significant percentage change compared to the previous month with a decrease of 35.2%, or 25 GWh.
- Total production for the year-to-date was 55 003 GWh. Comparing this to the same period last year shows that:
 - Total production was lower by 2 239 GWh, or 3.9%.
 - Combustible Fuels production showed the largest percentage change by energy source, being 47.6% higher.
 - Trade volume increased by 1 403 GWh, or 18.9%.

Electricity Production Compared to Previous Year



'Year to Date' Comparison of Production by Fuel Type



COUNTRY NOTES:

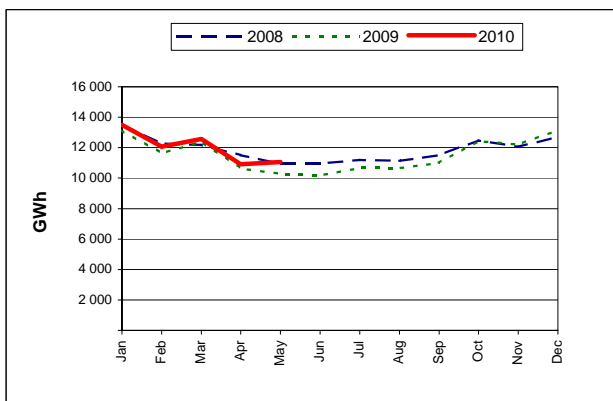
- Net production is estimated from monthly submission of gross production.

POLAND

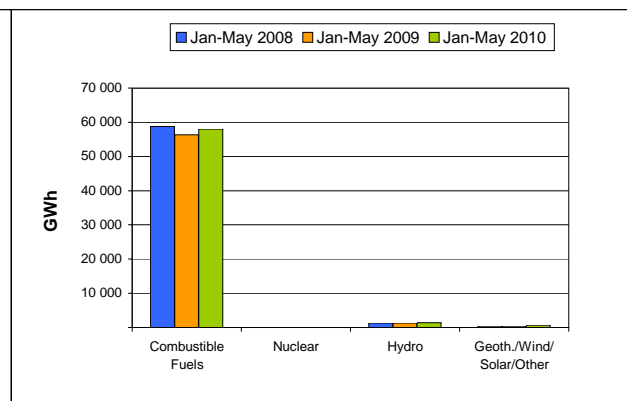
	GWh							
	May-10	May-09 % change	The last 3 months			Year-to-Date		Past Year 2009
			Feb-10	Mar-10	Apr-10	Jan-May 2010	% change	
+ Combustible Fuels	10 607	6.0%	11 764	12 098	10 455	58 064	3.0%	134 382
+ Nuclear	0	0.0%	0	0	0	0	0.0%	0
+ Hydro	336	60.8%	193	316	322	1 431	9.0%	2 978
+ Geoth./Wind/Solar/Other	115	42.0%	111	155	136	620	55.0%	1 091
= Indigenous Production	11 058	7.4%	12 068	12 569	10 913	60 115	3.5%	138 451
+ Imports	620	28.1%	586	648	681	3 116	14.2%	7 403
- Exports	474	2.2%	918	804	630	3 570	-11.0%	9 594
= Electricity Supplied	11 204	8.6%	11 736	12 413	10 964	59 661	5.0%	136 260

- Electricity production was 11 058 GWh in May 2010.
 - This was higher by 765 GWh, or 7.4%, compared to May 2009.
 - This was an increase of 145 GWh, or 1.3%, compared to the previous month.
 - Geoth./Wind/Solar/Other production showed the most significant percentage change compared to the previous month with a decrease of 15.4%, or 21 GWh.
- Total production for the year-to-date was 60 115 GWh. Comparing this to the same period last year shows that:
 - Total production was higher by 2 024 GWh, or 3.5%.
 - Geoth./Wind/Solar/Other production showed the largest percentage change by energy source, being 55% higher.
 - Trade volume decreased by 52 GWh, or 0.8%.

Electricity Production Compared to Previous Year



'Year to Date' Comparison of Production by Fuel Type



COUNTRY NOTES:

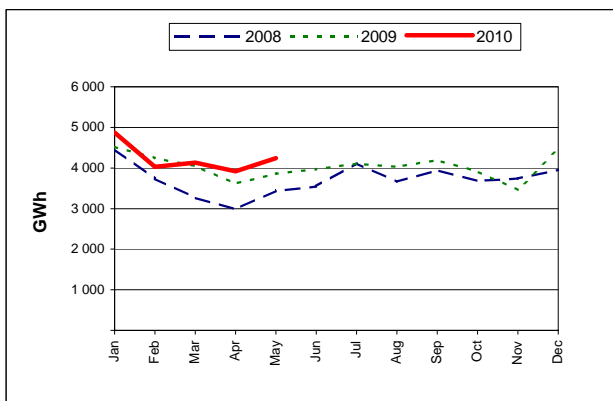
PORTUGAL

GWh

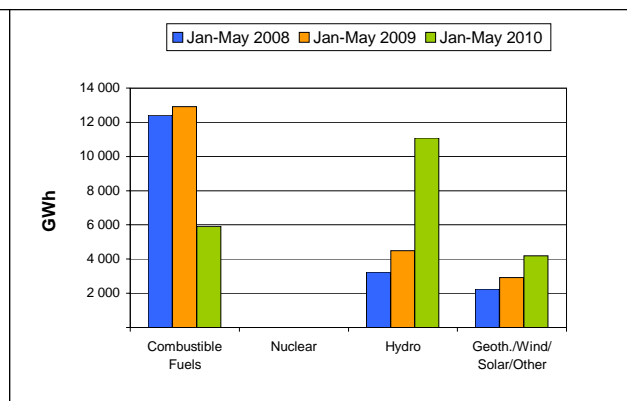
	May-10	May-09 % change	The last 3 months			Year-to-Date		Past Year 2009
			Feb-10	Mar-10	Apr-10	Jan-May 2010	% change	
+ Combustible Fuels	1 133	-58.2%	1 310	956	1 040	5 913	-54.2%	31 823
+ Nuclear	0	0.0%	0	0	0	0	0.0%	0
+ Hydro	2 213	317.5%	1 904	2 335	2 013	11 081	147.0%	8 783
+ Geoth./Wind/Solar/Other	895	42.7%	813	840	867	4 200	43.8%	7 858
= Indigenous Production	4 241	9.7%	4 027	4 131	3 920	21 194	4.3%	48 464
+ Imports	325	-54.3%	432	389	333	1 833	-45.0%	7 598
- Exports	379	119.1%	351	357	287	1 991	64.7%	2 822
= Electricity Supplied	4 187	-4.9%	4 108	4 163	3 966	21 036	-6.3%	53 240

- Electricity production was 4 241 GWh in May 2010.
 - This was higher by 374 GWh, or 9.7%, compared to May 2009.
 - This was an increase of 321 GWh, or 8.2%, compared to the previous month.
 - Hydro production showed the most significant percentage change compared to the previous month with an increase of 9.9%, or 200 GWh.
- Total production for the year-to-date was 21 194 GWh. Comparing this to the same period last year shows that:
 - Total production was higher by 878 GWh, or 4.3%.
 - Hydro production showed the largest percentage change by energy source, being 147% higher.
 - Trade volume decreased by 717 GWh, or 15.8%.

Electricity Production Compared to Previous Year



'Year to Date' Comparison of Production by Fuel Type



COUNTRY NOTES:

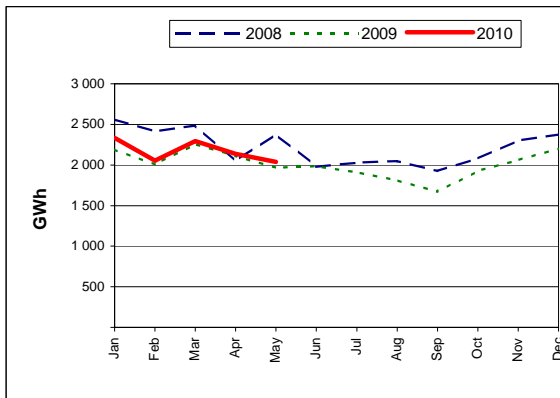
- Includes the Açores and Madeira.
- Geoth./Wind/Solar/Other production is estimated by the IEA Secretariat.
- Production and trade data for May 2010 are estimated by the IEA Secretariat.

SLOVAK REPUBLIC

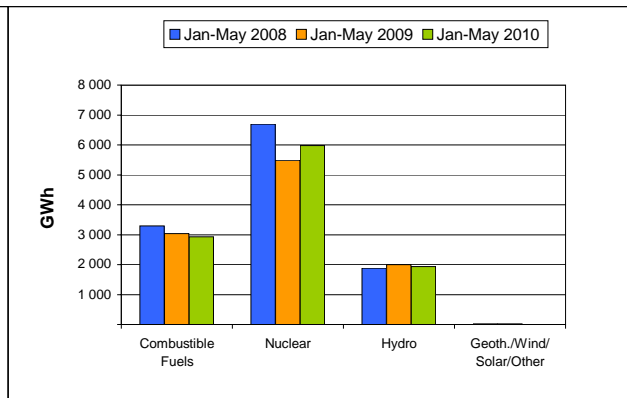
	GWh							
	May-10	May-09 % change	The last 3 months			Year-to-Date		Past Year 2009
			Feb-10	Mar-10	Apr-10	Jan-May 2010	% change	
+ Combustible Fuels	481	-24.6%	605	593	549	2 933	-3.4%	6 720
+ Nuclear	1 037	11.6%	1 155	1 279	1 225	5 977	9.0%	12 986
+ Hydro	519	30.4%	290	420	361	1 932	-3.4%	4 360
+ Geoth./Wind/Solar/Other	3	-25.0%	3	3	3	16	-20.0%	48
= Indigenous Production	2 040	3.6%	2 053	2 295	2 138	10 858	3.0%	24 114
+ Imports	429	0.9%	666	637	626	2 917	-10.9%	8 994
- Exports	428	-15.6%	458	583	668	2 581	-15.8%	7 680
= Electricity Supplied	2 041	8.2%	2 261	2 349	2 096	11 194	4.1%	25 428

- Electricity production was 2 040 GWh in May 2010.
 - This was higher by 71 GWh, or 3.6%, compared to May 2009.
 - This was a decrease of 98 GWh, or 4.6%, compared to the previous month.
 - Hydro production showed the most significant percentage change compared to the previous month with an increase of 43.8%, or 158 GWh.
- Total production for the year-to-date was 10 858 GWh. Comparing this to the same period last year shows that:
 - Total production was higher by 316 GWh, or 3%.
 - Geoth./Wind/Solar/Other production showed the largest percentage change by energy source, being 20% lower.
 - Trade volume decreased by 841 GWh, or 13.3%.

Electricity Production Compared to Previous Year



'Year to Date' Comparison of Production by Fuel Type



COUNTRY NOTES:

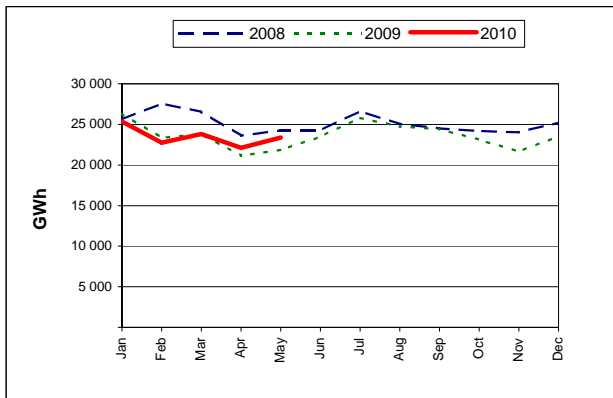
- Net production is estimated from monthly submission of gross production.
- Geoth./Wind/Solar/Other production is estimated by the IEA Secretariat.

SPAIN

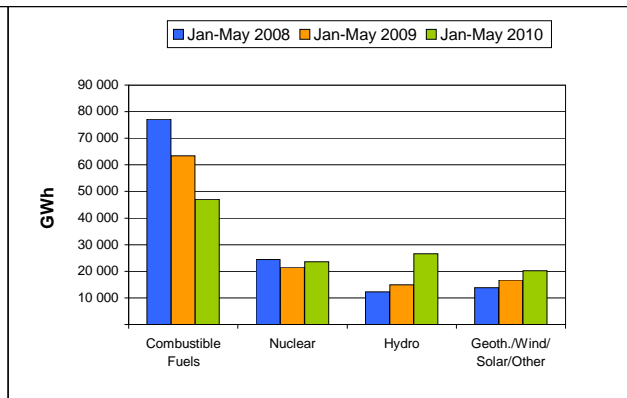
	GWh							
	May-10	May-09 % change	The last 3 months			Year-to-Date		Past Year 2009
			Feb-10	Mar-10	Apr-10	Jan-May 2010	% change	
+ Combustible Fuels	8 401	-30.6%	9 896	8 896	8 341	47 033	-25.8%	161 876
+ Nuclear	4 994	37.3%	4 573	4 796	4 827	23 609	9.8%	50 337
+ Hydro	5 769	118.9%	4 336	6 058	4 828	26 546	77.6%	28 612
+ Geoth./Wind/Solar/Other	4 228	21.0%	3 960	4 049	4 138	20 245	21.4%	42 574 e
= Indigenous Production	23 392	7.0%	22 765	23 799	22 134	117 433	0.8%	283 399 e
+ Imports	562	-32.5%	402	461	324	2 484	-22.4%	6 756
- Exports	1 004	-20.4%	911	1 022	1 054	5 038	-12.3%	14 859
= Electricity Supplied	22 950	7.1%	22 256	23 238	21 404	114 879	0.8%	275 296 e

- Electricity production was 23 392 GWh in May 2010.
 - This was higher by 1 528 GWh, or 7%, compared to May 2009.
 - This was an increase of 1 258 GWh, or 5.7%, compared to the previous month.
 - Hydro production showed the most significant percentage change compared to the previous month with an increase of 19.5%, or 941 GWh.
- Total production for the year-to-date was 117 433 GWh. Comparing this to the same period last year shows that:
 - Total production was higher by 886 GWh, or 0.8%.
 - Hydro production showed the largest percentage change by energy source, being 77.6% higher.
 - Trade volume decreased by 1 425 GWh, or 15.9%.

Electricity Production Compared to Previous Year



'Year to Date' Comparison of Production by Fuel Type



COUNTRY NOTES:

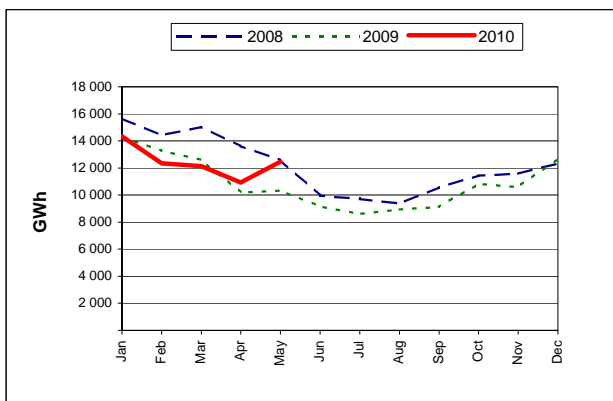
- Includes the Canary Islands.
- Geoth./Wind/Solar/Other production is estimated by the IEA Secretariat.
- Production and trade data for May 2010 are estimated by the IEA Secretariat.

SWEDEN

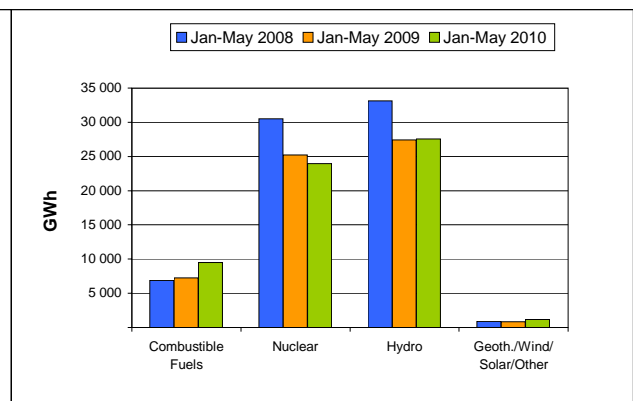
	GWh							
	May-10	May-09	The last 3 months			Year-to-Date		Past Year
		% change	Feb-10	Mar-10	Apr-10	Jan-May 2010	% change	2009
+ Combustible Fuels	1 208	19.1%	2 192	2 093	1 612	9 497	30.8%	15 389
+ Nuclear	5 490	30.1%	3 748	4 902	5 320	23 959	-5.0%	48 191
+ Hydro	5 545	13.0%	6 215	4 853	3 760	27 558	0.5%	64 642
+ Geoth./Wind/Solar/Other	215	13.2%	200	278	239	1 186	37.3%	2 488
= Indigenous Production	12 458	20.6%	12 355	12 126	10 931	62 200	2.4%	130 710
+ Imports	398	-39.6%	1 824	2 076	1 253	7 357	67.1%	13 771
- Exports	2 547	106.9%	263	645	1 325	5 049	8.2%	9 085
= Electricity Supplied	10 309	5.6%	13 916	13 557	10 859	64 508	6.7%	135 396

- Electricity production was 12 458 GWh in May 2010.
 - This was higher by 2 126 GWh, or 20.6%, compared to May 2009.
 - This was an increase of 1 527 GWh, or 14%, compared to the previous month.
 - Hydro production showed the most significant percentage change compared to the previous month with an increase of 47.5%, or 1 785 GWh.
- Total production for the year-to-date was 62 200 GWh. Comparing this to the same period last year shows that:
 - Total production was higher by 1 458 GWh, or 2.4%.
 - Geoth./Wind/Solar/Other production showed the largest percentage change by energy source, being 37.3% higher.
 - Trade volume increased by 3 337 GWh, or 36.8%.

Electricity Production Compared to Previous Year



'Year to Date' Comparison of Production by Fuel Type



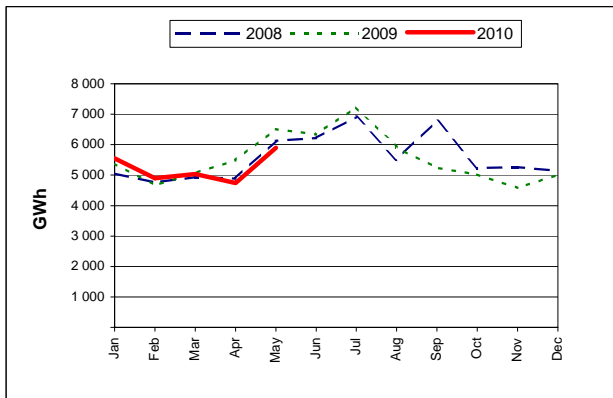
COUNTRY NOTES:

SWITZERLAND

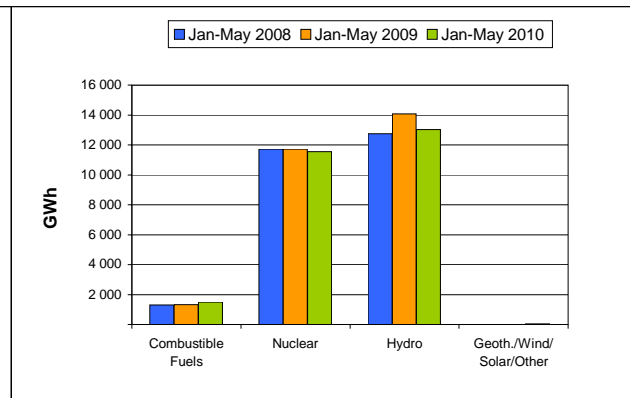
	GWh							
	May-10	May-09	The last 3 months			Year-to-Date		Past Year
		% change	Feb-10	Mar-10	Apr-10	Jan-May 2010	% change	2009
+ Combustible Fuels	298	16.9%	297	296	287	1 495	13.4%	3 183
+ Nuclear	2 203	-6.8%	2 187	2 412	2 326	11 551	-1.4%	26 119
+ Hydro	3 383	-13.0%	2 402	2 319	2 116	13 025	-7.5%	37 137
+ Geoth./Wind/Solar/Other	9	125.0%	9	9	9	45	125.0%	48
= Indigenous Production	5 893	-9.5%	4 895	5 036	4 738	26 116	-3.7%	66 487
+ Imports	3 135	44.5%	3 313	3 683	3 135	16 685	32.5%	31 368
- Exports	2 959	-7.9%	2 882	3 173	2 959	14 970	18.4%	33 525
= Electricity Supplied	6 069	11.0%	5 326	5 546	4 914	27 831	2.8%	64 330

- Electricity production was 5 893 GWh in May 2010.
 - This was lower by 621 GWh, or 9.5%, compared to May 2009.
 - This was an increase of 1 155 GWh, or 24.4%, compared to the previous month.
 - Hydro production showed the most significant percentage change compared to the previous month with an increase of 59.9%, or 1 267 GWh.
- Total production for the year-to-date was 26 116 GWh. Comparing this to the same period last year shows that:
 - Total production was lower by 1 014 GWh, or 3.7%.
 - Geoth./Wind/Solar/Other production showed the largest percentage change by energy source, being 125% higher.
 - Trade volume increased by 6 420 GWh, or 25.4%.

Electricity Production Compared to Previous Year



'Year to Date' Comparison of Production by Fuel Type



COUNTRY NOTES:

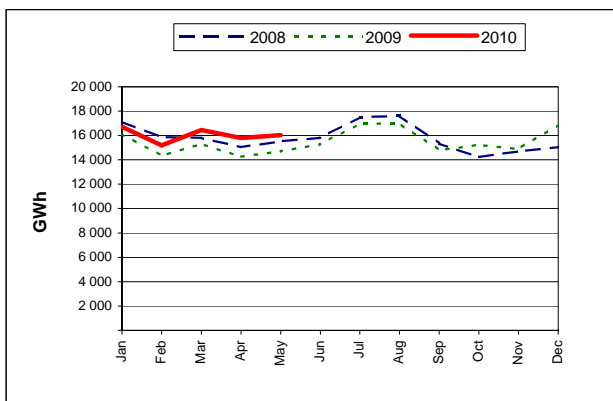
- Does not include Liechtenstein.
- Geoth./Wind/Solar/Other production is estimated by the IEA Secretariat.
- The production data for May 2010 are provisional data.
- The trade data for May 2010 are estimated by the IEA Secretariat.

TURKEY

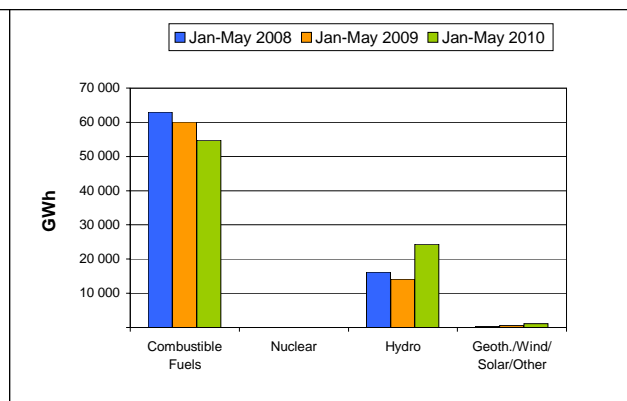
	GWh							
	May-10	May-09 % change	The last 3 months			Year-to-Date		Past Year 2009
			Feb-10	Mar-10	Apr-10	Jan-May 2010	% change	
+ Combustible Fuels	10 861	0.0%	10 654	10 923	10 049	54 778	-8.8%	148 369
+ Nuclear	0	0.0%	0	0	0	0	0.0%	0
+ Hydro	4 998	33.5%	4 310	5 301	5 531	24 302	71.9%	35 613
+ Geoth./Wind/Solar/Other	170	47.8%	237	219	225	1 121	94.3%	1 885
= Indigenous Production	16 029	8.9%	15 201	16 443	15 805	80 201	7.3%	185 867
+ Imports	58	13.7%	95	81	59	395	34.8%	814
- Exports	160	52.4%	188	122	108	756	47.7%	1 550
= Electricity Supplied	15 927	8.6%	15 108	16 402	15 756	79 840	7.1%	185 131

- Electricity production was 16 029 GWh in May 2010.
 - This was higher by 1 310 GWh, or 8.9%, compared to May 2009.
 - This was an increase of 224 GWh, or 1.4%, compared to the previous month.
 - Geoth./Wind/Solar/Other production showed the most significant percentage change compared to the previous month with a decrease of 24.4%, or 55 GWh.
- Total production for the year-to-date was 80 201 GWh. Comparing this to the same period last year shows that:
 - Total production was higher by 5 423 GWh, or 7.3%.
 - Geoth./Wind/Solar/Other production showed the largest percentage change by energy source, being 94.3% higher.
 - Trade volume increased by 346 GWh, or 43%.

Electricity Production Compared to Previous Year



'Year to Date' Comparison of Production by Fuel Type



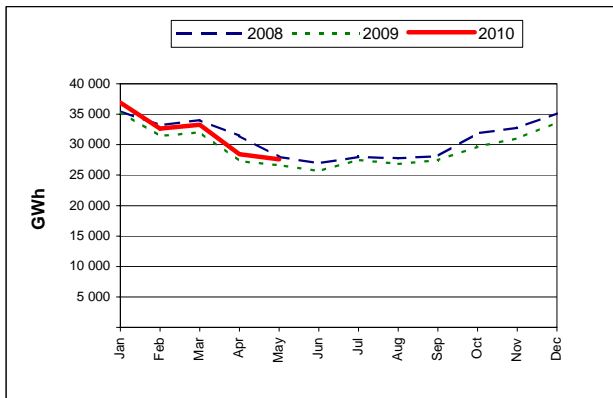
COUNTRY NOTES:

UNITED KINGDOM

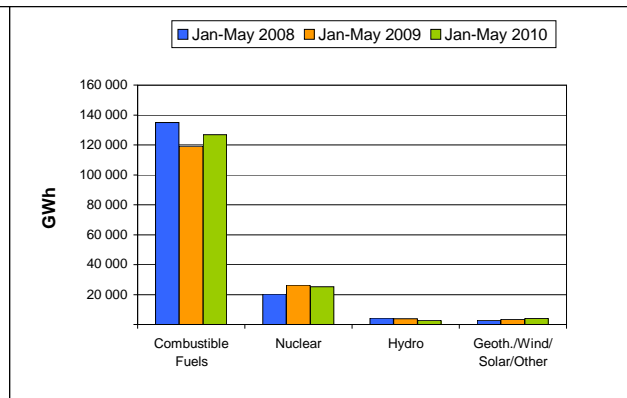
	GWh							
	May-10	May-09	The last 3 months			Year-to-Date		Past Year
		% change	Feb-10	Mar-10	Apr-10	Jan-May 2010	% change	2009
+ Combustible Fuels	22 366	9.6%	26 332	26 072	22 299	126 741	6.3%	274 476
+ Nuclear	4 018	-18.5%	5 010	5 786	4 681	25 287	-4.0%	63 101
+ Hydro	409	-36.8%	501	592	654	2 798	-28.0%	8 820
+ Geoth./Wind/Solar/Other	825	21.1%	800	808	817	4 041	16.9%	8 532
= Indigenous Production	27 618	3.6%	32 643	33 258	28 451	158 867	3.9%	354 929
+ Imports	658	-48.6%	221	336	382	1 738	-51.9%	6 608
- Exports	235	305.2%	771	743	338	2 958	201.8%	3 748
= Electricity Supplied	28 041	0.6%	32 093	32 851	28 495	157 647	1.4%	357 789

- Electricity production was 27 618 GWh in May 2010.
 - This was higher by 952 GWh, or 3.6%, compared to May 2009.
 - This was a decrease of 833 GWh, or 2.9%, compared to the previous month.
 - Hydro production showed the most significant percentage change compared to the previous month with a decrease of 37.5%, or 245 GWh.
- Total production for the year-to-date was 158 867 GWh. Comparing this to the same period last year shows that:
 - Total production was higher by 5 977 GWh, or 3.9%.
 - Hydro production showed the largest percentage change by energy source, being 28% lower.
 - Trade volume increased by 99 GWh, or 2.2%.

Electricity Production Compared to Previous Year



'Year to Date' Comparison of Production by Fuel Type



COUNTRY NOTES:

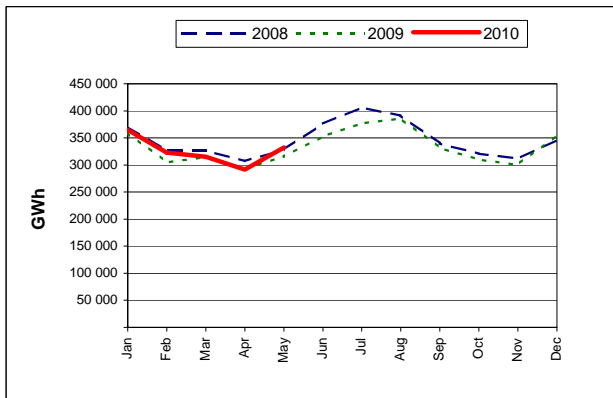
- Geoth./Wind/Solar/Other production is estimated by the IEA Secretariat.

UNITED STATES

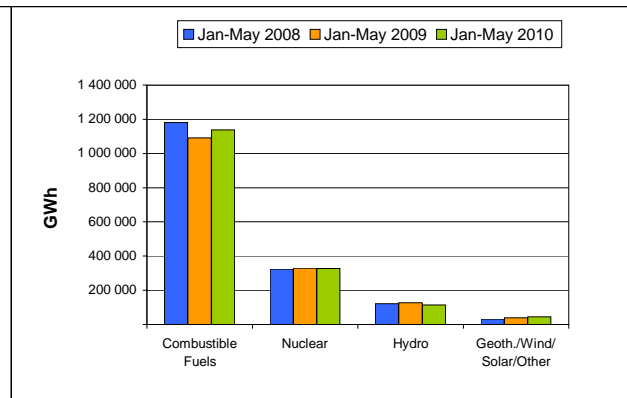
	GWh							
	May-10	May-09 % change	The last 3 months			Year-to-Date		Past Year 2009
			Feb-10	Mar-10	Apr-10	Jan-May 2010	% change	
+ Combustible Fuels	228 606	8.1%	228 645	218 621	202 335	1 138 345	4.3%	2 817 311
+ Nuclear	66 916	2.2%	65 500	64 889	57 834	327 954	-0.7%	799 836
+ Hydro	26 731	-15.1%	22 184	22 121	20 068	115 060	-9.3%	295 341
+ Geoth./Wind/Solar/Other	10 289	35.4%	6 444	9 694	11 060	45 353	15.2%	88 496 e
= Indigenous Production	332 542	5.2%	322 773	315 325	291 297	1 626 712	2.5%	4 000 984 e
+ Imports	3 058	-26.0%	4 410	4 352	3 883	21 010	13.4%	52 230
- Exports	1 765	27.2%	1 041	1 326	1 298	6 619	-20.7%	18 109
= Electricity Supplied	333 835	4.7%	326 142	318 351	293 882	1 641 103	2.7%	4 035 105 e

- Electricity production was 332 542 GWh in May 2010.
 - This was higher by 16 562 GWh, or 5.2%, compared to May 2009.
 - This was an increase of 41 245 GWh, or 14.2%, compared to the previous month.
 - Hydro production showed the most significant percentage change compared to the previous month with an increase of 33.2%, or 6 663 GWh.
- Total production for the year-to-date was 1 626 712 GWh. Comparing this to the same period last year shows that:
 - Total production was higher by 39 045 GWh, or 2.5%.
 - Geoth./Wind/Solar/Other production showed the largest percentage change by energy source, being 15.2% higher.
 - Trade volume increased by 747 GWh, or 2.8%.

Electricity Production Compared to Previous Year



'Year to Date' Comparison of Production by Fuel Type



COUNTRY NOTES:

- Includes the 50 States and the District of Columbia.
- The production data for May 2010 are estimated based on the Monthly Flash Estimates of Electric Power Data released by the Energy Information Administration.

PRINCIPLES AND DEFINITIONS

General notes

- The objective of the Monthly Electricity Statistics is to provide an early indication of supply side trends in the electricity sector. Therefore, to allow timely publication, the IEA may supplement national statistics with data from other sources.
- Where adequate information is not available from external sources estimates have been made by the IEA. Methodological notes are provided on individual country pages.
- Definitions are consistent with the IEA's "Electricity and Heat" annual questionnaire. Statistics are subject to revision upon official receipt of the annual questionnaire from National Administrations or improved data becoming available.
- Monthly statistics are consistent with those provided in the Quarterly Statistics published by the IEA.
- Electricity production is reported in TWh for the regional aggregates and in GWh for the individual countries. The grouping of electricity generation by source reflects available monthly data and/or small individual quantities.
- Note that historic data is often recalculated. Therefore, the latest publication should be considered most accurate. Regional and organisational summaries may also change based on country recalculations.

Basic definitions

- 'Production' = Net generation excludes power station own use.
- 'Combustible Fuels' = Production from combustible fuels, including combustible renewables and wastes.
- 'Nuclear' = Energy released by nuclear fission or nuclear fusion.
- 'Hydro' = Net generation from hydro facilities including pumped storage production.
- 'Geoth./Wind/Solar/Other' = Generation from geothermal, wind, solar and other renewables not included in combustible fuels.
- 'Indigenous Production' = The sum of electricity production by energy source.
- 'Imports/ Exports' = Amounts of electricity that have crossed political boundaries of the country, whether customs clearance has taken place or not.
- 'Electricity supplied' = Indigenous production + Imports - Exports.
- 'Year' = Calendar year (January to December) unless otherwise stated.
- 'Year-to-date' = The sum of all months from the start of the calendar year to the latest month.

Publication details and further information

- This publication is released in the middle of each month onto the IEA's Website. (<http://www.iea.org/publications/index.asp>).
- Data should not be reproduced for publication without permission of Energy Statistics Division, IEA.

Comments and queries on the data or on the presentation should be addressed to:
Email: CES@iea.org

For other information please contact the Energy Statistics Division of the IEA by:

Email: stats@iea.org
Fax: +33 (0)1 40 57 66 49 or
Phone: +33 (0)1 40 57 66 25
International Energy Agency
9, rue de la Fédération, 75739 Paris Cedex 15 - France