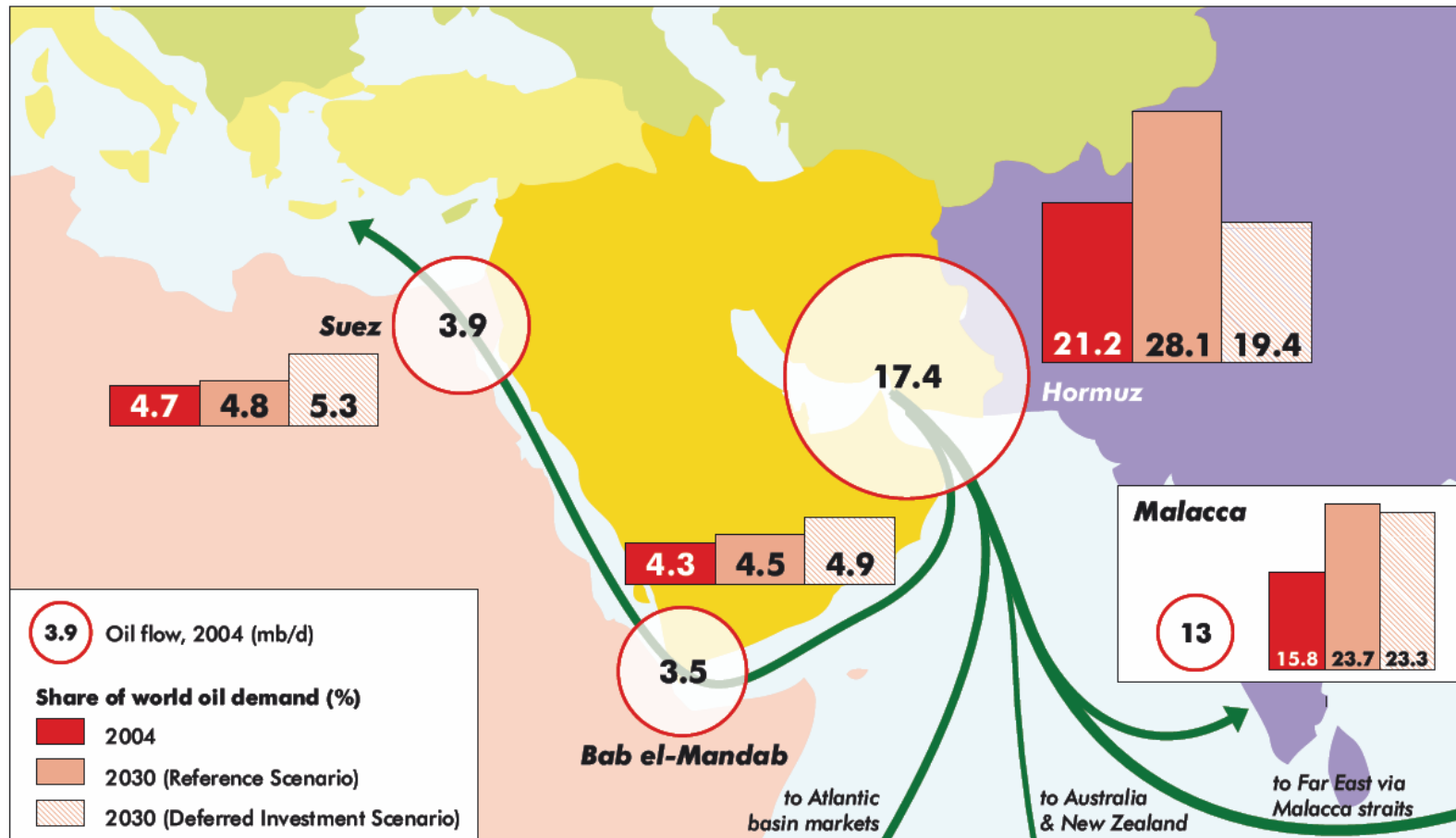


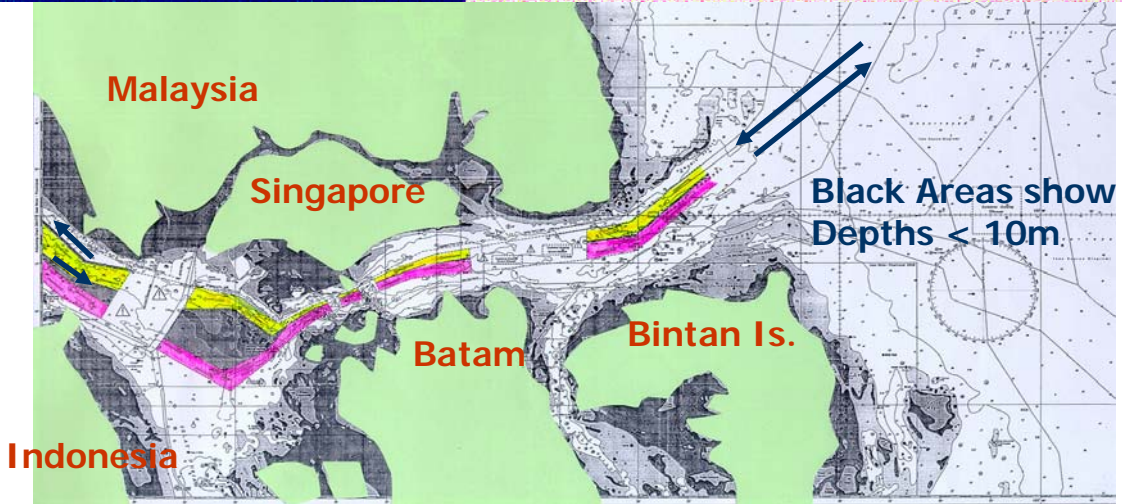

MENA Oil Exports through Hormuz



Much of the additional oil and LNG exports from MENA in the future will be shipped through just three maritime routes

Mallacca Straits

Ship type	Size	Length	Capacity	*Draught
VLCC (Very Large Crude Carrier)	150,000 tons deadweight	340 metres	260,000 tonnes of crude oil	19 metres



Piracy, forest Fires and shallows depths make it one of the most difficult straits to safely navigate