



INTERNATIONAL ENERGY AGENCY
AGENCE INTERNATIONALE DE L'ENERGIE

9, rue de la Fédération
 75739 Paris CEDEX 15, France

Monthly Electricity Statistics

June 2009

The IEA's Monthly Electricity Statistics provides timely electricity production and trade data for all OECD Member Countries. It aims to report as up-to-date and consistent information as possible for the last four months. It also provides previous annual data and year-to-date indicators.

Data is at the individual country level as well as in organisational and regional groupings. These groupings include: OECD Total, OECD Europe, OECD North America, OECD Pacific and IEA Total. The units are TWh for the groupings and GWh for the single countries.

Highlights

June 2009 vs. June 2008

Total OECD production reached 809.3 TWh, a decrease of 4.6% or 38.7 TWh over the same month last year.

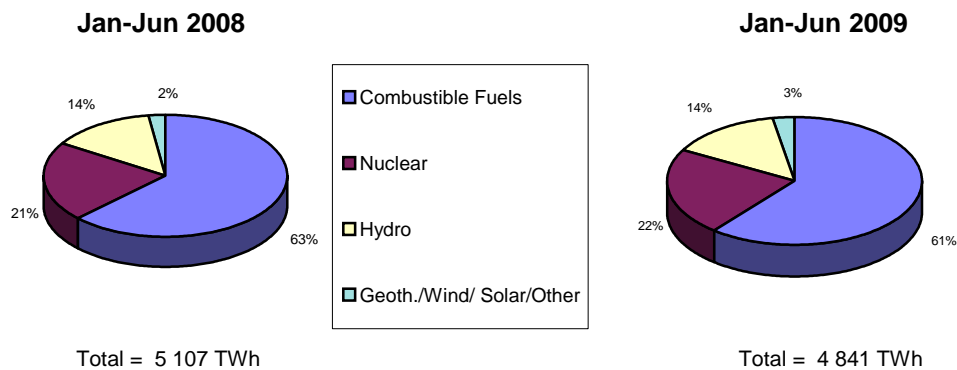
- Production from Hydro fell by 12.6% to 44.6 TWh in OECD Europe.
- In OECD North America, imports fell by 33.0% to 6.4 TWh and exports fell by 22.6% to 7.5 TWh.
- Production from Geoth./Wind/Solar/Other rose by 19.5% to 1.3 TWh in OECD Pacific.

January - June 2009 vs. the same period in 2008

Total OECD production reached 4 840.6 TWh, a decrease of 5.2% or 266.2 TWh over the same period last year.

- Production from Combustible Fuels fell by 8.3% to 2 942.0 TWh in OECD Total.
- In OECD North America, imports fell by 24.1% to 33.9 TWh and exports fell by 18.0% to 36.7 TWh.
- Production from Geoth./Wind/Solar/Other rose by 15.2% to 132.6 TWh in OECD Total.

OECD Electricity Production by Fuel Type Year-to-Date Comparison



CONTENTS

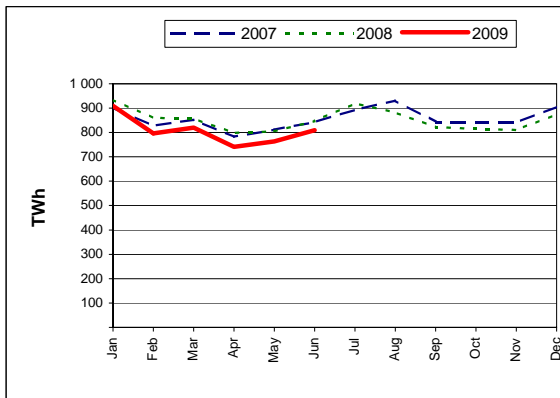
| | Page # |
|---|--------|
| ORGANISATIONAL AND REGIONAL TABLES | |
| OECD Total | 1 |
| OECD Europe | 2 |
| OECD North America | 3 |
| OECD Pacific | 4 |
| IEA Total | 5 |
| COUNTRY TABLES | |
| Australia | 6 |
| Austria | 7 |
| Belgium | 8 |
| Canada | 9 |
| Czech Republic | 10 |
| Denmark | 11 |
| Finland | 12 |
| France | 13 |
| Germany | 14 |
| Greece | 15 |
| Hungary | 16 |
| Iceland | 17 |
| Ireland | 18 |
| Italy | 19 |
| Japan | 20 |
| Korea | 21 |
| Luxembourg | 22 |
| Mexico | 23 |
| Netherlands | 24 |
| New Zealand | 25 |
| Norway | 26 |
| Poland | 27 |
| Portugal | 28 |
| Slovak Republic | 29 |
| Spain | 30 |
| Sweden | 31 |
| Switzerland | 32 |
| Turkey | 33 |
| United Kingdom | 34 |
| United States | 35 |
| PRINCIPLES AND DEFINITIONS | 36 |

OECD Total

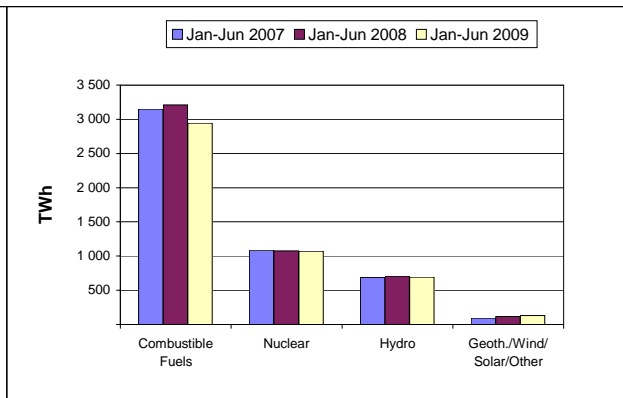
| | TWh | | | | | | | |
|--------------------------------|--------------|--------------|-------------------|--------------|--------------|----------------|--------------|---------------|
| | Jun-09 | Jun-08 | The last 3 months | | | Year-to-Date | | Past Year |
| | | % change | Mar-09 | Apr-09 | May-09 | Jan-Jun 2009 | % change | 2008 |
| + Combustible Fuels | 497.2 | -6.8% | 497.8 | 442.6 | 451.4 | 2 942.0 | -8.3% | 6 488 |
| + Nuclear | 171.8 | 0.9% | 183.5 | 163.7 | 168.1 | 1 072.2 | -0.3% | 2 170 |
| + Hydro | 118.5 | -5.5% | 115.6 | 112.7 | 121.6 | 693.9 | -2.0% | 1 345 |
| + Geoth./Wind/Solar/Other | 21.8 | 13.4% | 23.4 | 22.5 | 22.6 | 132.6 | 15.2% | 231 |
| = Indigenous Production | 809.3 | -4.6% | 820.3 | 741.5 | 763.7 | 4 840.6 | -5.2% | 10 234 |
| + Imports | 30.0 | -11.5% | 31.3 | 29.1 | 29.2 | 185.1 | -10.6% | 401 |
| - Exports | 29.4 | -9.3% | 30.7 | 27.3 | 28.0 | 179.4 | -11.5% | 390 |
| = Electricity Supplied | 809.9 | -4.7% | 820.9 | 743.3 | 764.9 | 4 846.3 | -5.2% | 10 245 |

- Electricity production was 809.3 TWh in June 2009.
 - This was lower by 38.7 TWh, or 4.6%, compared to June 2008.
 - This was an increase of 45.6 TWh, or 6%, compared to the previous month.
 - Combustible Fuels production showed the most significant percentage change compared to the previous month with an increase of 10.1%, or 45.8 TWh.
- Total production for the year-to-date was 4 840.6 TWh. Comparing this to the same period last year shows that:
 - Total production was lower by 266.2 TWh, or 5.2%.
 - Geoth./Wind/Solar/Other production showed the largest percentage change by fuel type, being 15.2% higher.
 - Trade volume decreased by 45.4 TWh, or 11.1%.

Electricity Production Compared to Previous Year



'Year to Date' Comparison of Production by Fuel Type



COUNTRY NOTES:

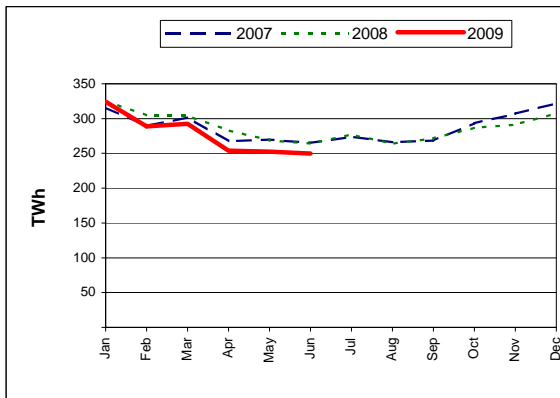
- OECD includes Australia, Austria, Belgium, Canada, the Czech Republic, Denmark, Finland, France, Germany, Greece, Hungary, Iceland, Ireland, Italy, Japan, Korea, Luxembourg, Mexico, the Netherlands, New Zealand, Portugal, Spain, Sweden, Norway, Poland, the Slovak Republic, Switzerland, Turkey, the United Kingdom and the United States.

OECD Europe

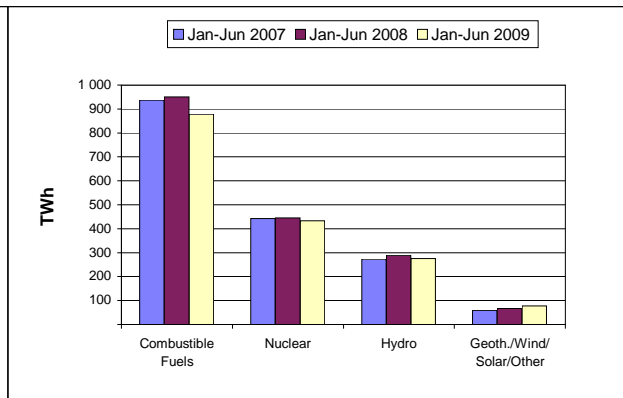
| | TWh | | | | | | | |
|--------------------------------|--------------|--------------|-------------------|--------------|--------------|----------------|--------------|--------------|
| | Jun-09 | Jun-08 | The last 3 months | | | Year-to-Date | | Past Year |
| | | % change | Mar-09 | Apr-09 | May-09 | Jan-Jun 2009 | % change | 2008 |
| + Combustible Fuels | 130.8 | -6.9% | 156.4 | 129.2 | 126.5 | 877.8 | -7.7% | 1 895 |
| + Nuclear | 61.8 | -0.5% | 76.1 | 67.7 | 64.8 | 432.6 | -2.8% | 875 |
| + Hydro | 44.6 | -12.6% | 46.8 | 44.7 | 47.9 | 274.9 | -4.7% | 542 |
| + Geoth./Wind/Solar/Other | 12.8 | 17.5% | 13.4 | 12.5 | 13.4 | 77.4 | 14.8% | 139 |
| = Indigenous Production | 250.0 | -5.5% | 292.7 | 254.1 | 252.6 | 1 662.8 | -5.1% | 3 451 |
| + Imports | 23.6 | -3.2% | 26.6 | 23.6 | 23.7 | 151.2 | -7.0% | 318 |
| - Exports | 21.9 | -3.6% | 24.9 | 22.0 | 22.2 | 142.8 | -9.7% | 307 |
| = Electricity Supplied | 251.7 | -5.5% | 294.3 | 255.6 | 254.0 | 1 671.2 | -4.8% | 3 462 |

- Electricity production was 250.0 TWh in June 2009.
 - This was lower by 14.6 TWh, or 5.5%, compared to June 2008.
 - This was a decrease of 2.6 TWh, or 1%, compared to the previous month.
 - Hydro production showed the most significant percentage change compared to the previous month with a decrease of 6.9%, or 3.3 TWh.
- Total production for the year-to-date was 1 662.8 TWh. Comparing this to the same period last year shows that:
 - Total production was lower by 89.0 TWh, or 5.1%.
 - Geoth./Wind/Solar/Other production showed the largest percentage change by fuel type, being 14.8% higher.
 - Trade volume decreased by 26.6 TWh, or 8.3%.

Electricity Production Compared to Previous Year



'Year to Date' Comparison of Production by Fuel Type



COUNTRY NOTES:

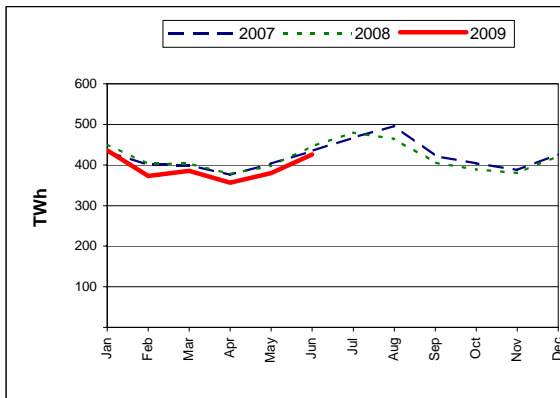
- OECD Europe includes Austria, Belgium, the Czech Republic, Denmark, Finland, France, Germany, Greece, Hungary, Iceland, Ireland, Italy, Luxembourg, the Netherlands, Portugal, Spain, Sweden, Norway, Poland, the Slovak Republic, Switzerland, Turkey and the United Kingdom.

OECD North America

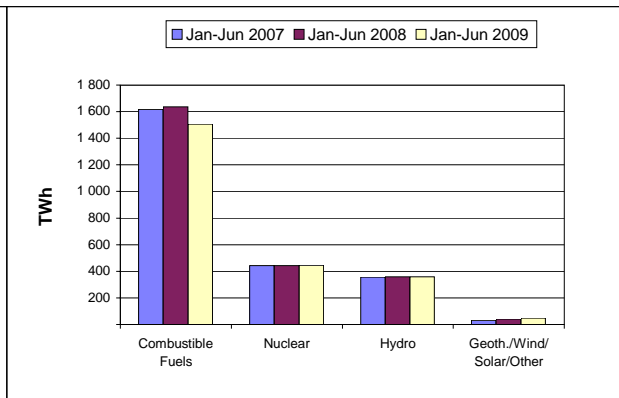
| | TWh | | | | | | | |
|--------------------------------|--------------|--------------|-------------------|--------------|--------------|----------------|--------------|--------------|
| | Jun-09 | Jun-08 | The last 3 months | | | Year-to-Date | | Past Year |
| | | % change | Mar-09 | Apr-09 | May-09 | Jan-Jun 2009 | % change | 2008 |
| + Combustible Fuels | 276.9 | -7.4% | 243.6 | 224.8 | 240.2 | 1 507.1 | -7.9% | 3 356 |
| + Nuclear | 78.3 | 0.8% | 75.7 | 65.6 | 70.4 | 444.8 | 0.3% | 906 |
| + Hydro | 62.7 | 1.3% | 57.9 | 57.3 | 61.7 | 357.8 | -0.2% | 682 |
| + Geoth./Wind/Solar/Other | 7.7 | 6.3% | 8.6 | 8.8 | 7.9 | 47.5 | 16.8% | 78 |
| = Indigenous Production | 425.6 | -4.5% | 385.8 | 356.5 | 380.2 | 2 357.1 | -4.9% | 5 023 |
| + Imports | 6.4 | -33.0% | 4.7 | 5.5 | 5.6 | 33.9 | -24.1% | 83 |
| - Exports | 7.5 | -22.6% | 5.8 | 5.2 | 5.8 | 36.7 | -18.0% | 83 |
| = Electricity Supplied | 424.5 | -4.7% | 384.7 | 356.8 | 379.9 | 2 354.4 | -5.0% | 5 022 |

- Electricity production was 425.6 TWh in June 2009.
 - This was lower by 20.2 TWh, or 4.5%, compared to June 2008.
 - This was an increase of 45.5 TWh, or 12%, compared to the previous month.
 - Combustible Fuels production showed the most significant percentage change compared to the previous month with an increase of 15.3%, or 36.7 TWh.
- Total production for the year-to-date was 2 357.1 TWh. Comparing this to the same period last year shows that:
 - Total production was lower by 122.3 TWh, or 4.9%.
 - Geoth./Wind/Solar/Other production showed the largest percentage change by fuel type, being 16.8% higher.
 - Trade volume decreased by 18.8 TWh, or 21.1%.

Electricity Production Compared to Previous Year



'Year to Date' Comparison of Production by Fuel Type



COUNTRY NOTES:

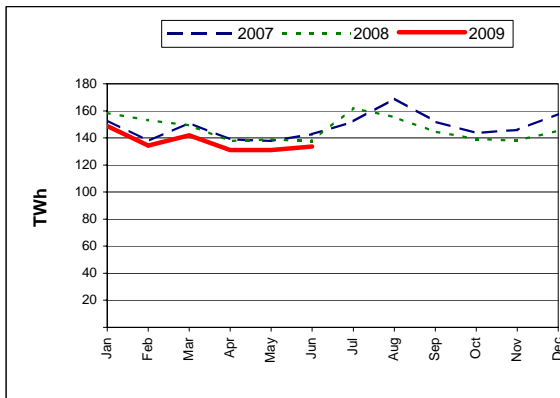
- OECD North America includes Canada, Mexico and the United States.

OECD Pacific

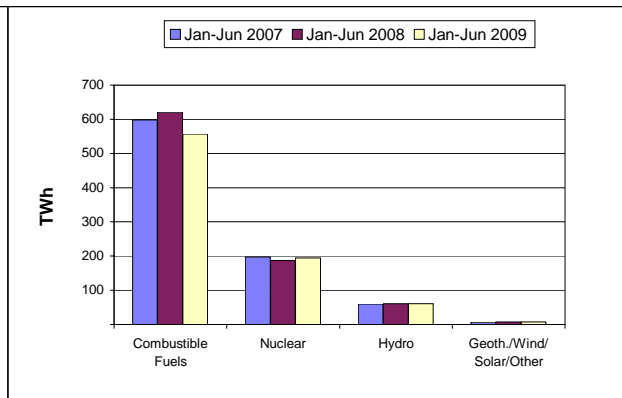
| | TWh | | | | | | | |
|--------------------------------|--------------|--------------------|-------------------|--------------|--------------|--------------|--------------|-------------------|
| | Jun-09 | Jun-08 % change | The last 3 months | | | Year-to-Date | | Past Year 2008 |
| | | | Mar-09 | Apr-09 | May-09 | Jan-Jun 2009 | % change | |
| + Combustible Fuels | 89.5 | -4.5% | 97.8 | 88.7 | 84.7 | 557.1 | -10.2% | 1 237 |
| + Nuclear | 31.8 | 4.2% | 31.7 | 30.4 | 32.9 | 194.7 | 4.0% | 389 |
| + Hydro | 11.1 | -9.8% | 10.9 | 10.6 | 12.1 | 61.1 | 0.3% | 121 |
| + Geoth./Wind/Solar/Other | 1.3 | 19.5% | 1.3 | 1.2 | 1.3 | 7.8 | 10.0% | 15 |
| = Indigenous Production | 133.7 | -2.9% | 141.8 | 131.0 | 131.0 | 820.7 | -6.3% | 1 761 |
| + Imports | 0.0 | 0.0% | 0.0 | 0.0 | 0.0 | 0.0 | 0.0% | 0 |
| - Exports | 0.0 | 0.0% | 0.0 | 0.0 | 0.0 | 0.0 | 0.0% | 0 |
| = Electricity Supplied | 133.7 | -2.9% | 141.8 | 131.0 | 131.0 | 820.7 | -6.3% | 1 761 |

- Electricity production was 133.7 TWh in June 2009.
 - This was lower by 3.9 TWh, or 2.9%, compared to June 2008.
 - This was an increase of 2.8 TWh, or 2.1%, compared to the previous month.
 - Hydro production showed the most significant percentage change compared to the previous month with a decrease of 7.8%, or 0.9 TWh.
- Total production for the year-to-date was 820.7 TWh. Comparing this to the same period last year shows that:
 - Total production was lower by 54.9 TWh, or 6.3%.
 - Combustible Fuels production showed the largest percentage change by fuel type, being 10.2% lower.

Electricity Production Compared to Previous Year



'Year to Date' Comparison of Production by Fuel Type



COUNTRY NOTES:

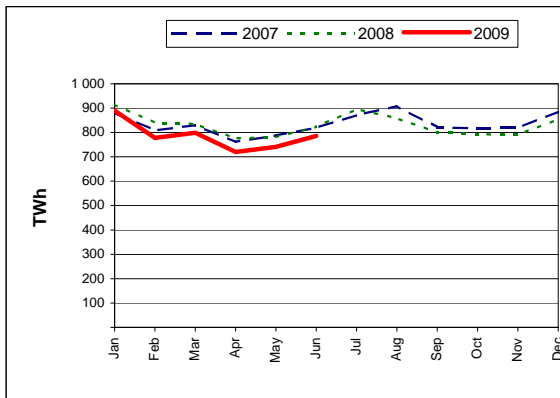
- OECD Pacific includes Australia, Japan, Korea and New Zealand.

IEA Total

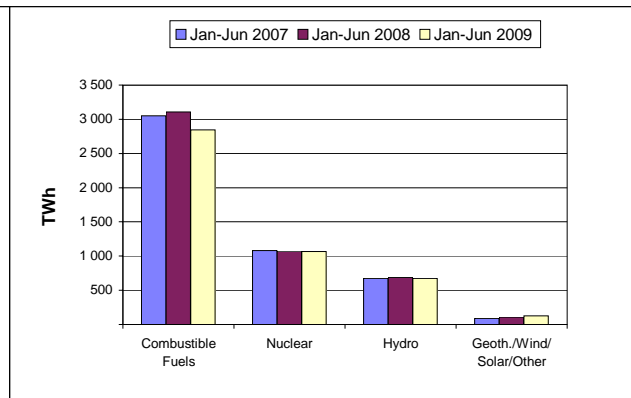
| | TWh | | | | | | | |
|--------------------------------|--------------|--------------|-------------------|--------------|--------------|----------------|--------------|--------------|
| | Jun-09 | Jun-08 | The last 3 months | | | Year-to-Date | | Past Year |
| | | % change | Mar-09 | Apr-09 | May-09 | Jan-Jun 2009 | % change | 2008 |
| + Combustible Fuels | 479.0 | -7.0% | 482.1 | 426.7 | 433.3 | 2 845.5 | -8.4% | 6 296 |
| + Nuclear | 170.9 | 0.9% | 182.6 | 163.2 | 167.7 | 1 067.5 | -0.3% | 2 160 |
| + Hydro | 115.2 | -5.1% | 111.9 | 109.0 | 118.2 | 673.5 | -1.9% | 1 295 |
| + Geoth./Wind/Solar/Other | 21.0 | 14.0% | 22.5 | 21.6 | 21.6 | 127.1 | 15.9% | 220 |
| = Indigenous Production | 786.1 | -4.6% | 799.0 | 720.5 | 740.9 | 4 713.6 | -5.2% | 9 972 |
| + Imports | 30.0 | -11.6% | 31.3 | 29.0 | 29.2 | 185.0 | -10.7% | 400 |
| - Exports | 29.3 | -9.3% | 30.6 | 27.2 | 28.0 | 178.8 | -11.5% | 389 |
| = Electricity Supplied | 786.7 | -4.7% | 799.7 | 722.3 | 742.0 | 4 719.8 | -5.2% | 9 983 |

- Electricity production was 786.1 TWh in June 2009.
 - This was lower by 38.2 TWh, or 4.6%, compared to June 2008.
 - This was an increase of 45.2 TWh, or 6.1%, compared to the previous month.
 - Combustible Fuels production showed the most significant percentage change compared to the previous month with an increase of 10.6%, or 45.7 TWh.
- Total production for the year-to-date was 4 713.6 TWh. Comparing this to the same period last year shows that:
 - Total production was lower by 260.8 TWh, or 5.2%.
 - Geoth./Wind/Solar/Other production showed the largest percentage change by fuel type, being 15.9% higher.
 - Trade volume decreased by 45.4 TWh, or 11.1%.

Electricity Production Compared to Previous Year



'Year to Date' Comparison of Production by Fuel Type



COUNTRY NOTES:

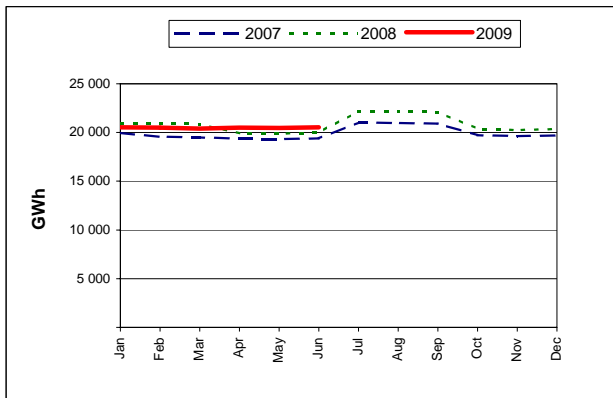
- IEA includes all OECD countries except Iceland and Mexico.
- Poland has been included in the IEA aggregate since the September 2008 edition.
- Historical data has been revised to be consistent with the new definition.

AUSTRALIA

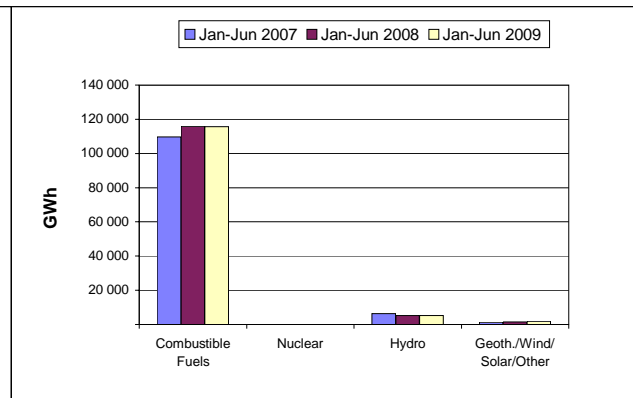
| | GWh | | | | | | | |
|--------------------------------|---------------|-------------|-------------------|---------------|---------------|----------------|-------------|----------------|
| | Jun-09 | Jun-08 | The last 3 months | | | Year-to-Date | | Past Year |
| | | % change | Mar-09 | Apr-09 | May-09 | Jan-Jun 2009 | % change | 2008 |
| + Combustible Fuels | 19 255 | 2.5% | 19 204 | 19 192 | 19 111 | 115 695 | -0.1% | 234 445 |
| + Nuclear | 0 | 0.0% | 0 | 0 | 0 | 0 | 0.0% | 0 |
| + Hydro | 945 | 2.6% | 880 | 976 | 1 017 | 5 316 | 0.2% | 12 426 |
| + Geoth./Wind/Solar/Other | 334 | 22.8% | 320 | 324 | 330 | 1 936 | 27.0% | 3 295 |
| = Indigenous Production | 20 534 | 2.8% | 20 404 | 20 492 | 20 458 | 122 947 | 0.3% | 250 166 |
| + Imports | 0 | 0.0% | 0 | 0 | 0 | 0 | 0.0% | 0 |
| - Exports | 0 | 0.0% | 0 | 0 | 0 | 0 | 0.0% | 0 |
| = Electricity Supplied | 20 534 | 2.8% | 20 404 | 20 492 | 20 458 | 122 947 | 0.3% | 250 166 |

- Electricity production was 20 534 GWh in June 2009.
 - This was higher by 564 GWh, or 2.8%, compared to June 2008.
 - This was an increase of 76 GWh, or 0.4%, compared to the previous month.
 - Hydro production showed the most significant percentage change compared to the previous month with a decrease of 7.1%, or 72 GWh.
- Total production for the year-to-date was 122 947 GWh. Comparing this to the same period last year shows that:
 - Total production was higher by 324 GWh, or 0.3%.
 - Geoth./Wind/Solar/Other production showed the largest percentage change by fuel type, being 27% higher.

Electricity Production Compared to Previous Year



'Year to Date' Comparison of Production by Fuel Type



COUNTRY NOTES:

- Excludes the overseas territories.
- Geoth./Wind/Solar/Other production is estimated by the IEA Secretariat.
- The breakdown of Combustible Fuels and Hydro electricity production is estimated by the IEA Secretariat.
- Monthly total net production is estimated based on quarterly data.

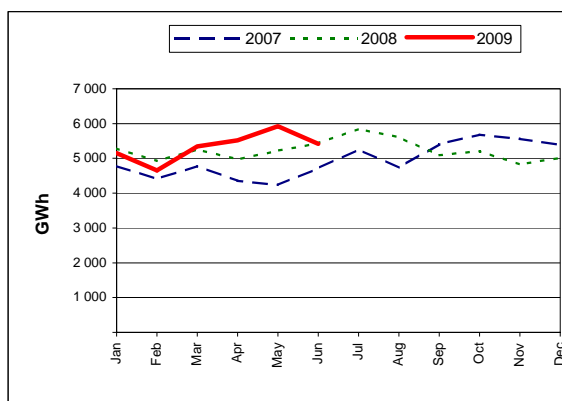
AUSTRIA

GWh

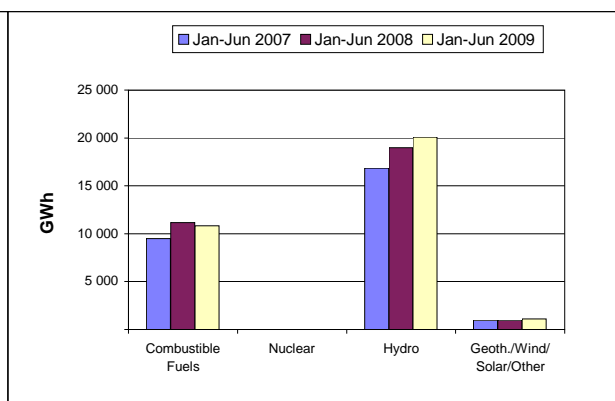
| | Jun-09 | Jun-08 % change | The last 3 months | | | Year-to-Date | | Past Year 2008 |
|--------------------------------|--------------|--------------------|-------------------|--------------|--------------|---------------|--------------|-------------------|
| | | | Mar-09 | Apr-09 | May-09 | Jan-Jun 2009 | % change | |
| + Combustible Fuels | 1 025 | -3.5% | 2 007 | 1 301 | 1 121 | 10 813 | -3.1% | 23 282 |
| + Nuclear | 0 | 0.0% | 0 | 0 | 0 | 0 | 0.0% | 0 |
| + Hydro | 4 180 | -0.5% | 3 151 | 4 021 | 4 586 | 20 085 | 5.8% | 37 428 |
| + Geoth./Wind/Solar/Other | 209 | 22.2% | 190 | 193 | 219 | 1 118 | 14.7% | 2 023 |
| = Indigenous Production | 5 414 | -0.3% | 5 348 | 5 515 | 5 926 | 32 016 | 2.9% | 62 733 |
| + Imports | 991 | 20.4% | 1 844 | 1 115 | 666 | 9 296 | -14.1% | 19 798 |
| - Exports | 1 677 | 58.4% | 1 442 | 1 753 | 1 765 | 9 041 | 16.2% | 14 932 |
| = Electricity Supplied | 4 728 | -9.0% | 5 750 | 4 877 | 4 827 | 32 271 | -5.5% | 67 599 |

- Electricity production was 5 414 GWh in June 2009.
 - This was lower by 19 GWh, or 0.3%, compared to June 2008.
 - This was a decrease of 512 GWh, or 8.6%, compared to the previous month.
 - Hydro production showed the most significant percentage change compared to the previous month with a decrease of 8.9%, or 406 GWh.
- Total production for the year-to-date was 32 016 GWh. Comparing this to the same period last year shows that:
 - Total production was higher by 901 GWh, or 2.9%.
 - Geoth./Wind/Solar/Other production showed the largest percentage change by fuel type, being 14.7% higher.
 - Trade volume decreased by 269 GWh, or 1.4%.

Electricity Production Compared to Previous Year



'Year to Date' Comparison of Production by Fuel Type



COUNTRY NOTES:

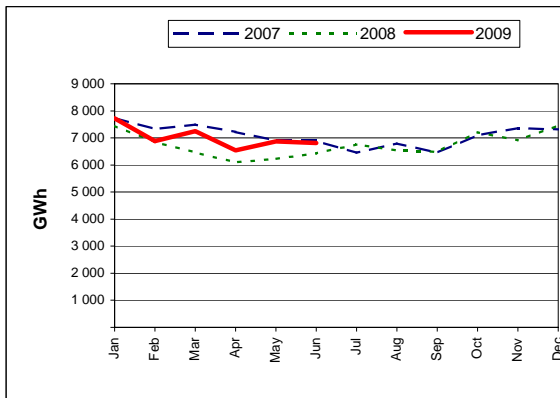
BELGIUM

GWh

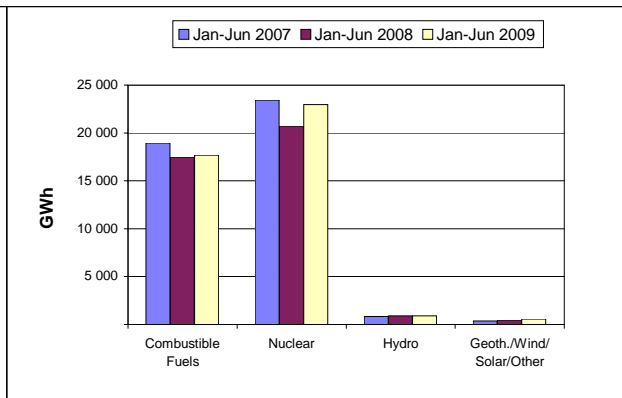
| | Jun-09 | Jun-08 % change | The last 3 months | | | Year-to-Date | | Past Year 2008 |
|--------------------------------|--------------|--------------------|-------------------|--------------|--------------|---------------|--------------|-------------------|
| | | | Mar-09 | Apr-09 | May-09 | Jan-Jun 2009 | % change | |
| + Combustible Fuels | 2 947 | 8.6% | 3 034 | 2 957 | 2 871 | 17 671 | 1.1% | 34 989 e |
| + Nuclear | 3 628 | 2.2% | 3 933 | 3 357 | 3 745 | 22 946 | 10.8% | 43 338 |
| + Hydro | 143 | 5.9% | 163 | 150 | 150 | 907 | 2.4% | 1 743 |
| + Geoth./Wind/Solar/Other | 98 | 139.0% | 114 | 73 | 108 | 557 | 17.0% | 880 e |
| = Indigenous Production | 6 816 | 5.9% | 7 244 | 6 537 | 6 874 | 42 081 | 6.4% | 80 950 e |
| + Imports | 701 | -52.3% | 757 | 713 | 654 | 4 786 | -53.3% | 17 157 |
| - Exports | 948 | 31.7% | 648 | 683 | 895 | 4 352 | 66.0% | 6 561 |
| = Electricity Supplied | 6 569 | -8.6% | 7 353 | 6 567 | 6 633 | 42 515 | -9.9% | 91 546 e |

- Electricity production was 6 816 GWh in June 2009.
 - This was higher by 377 GWh, or 5.9%, compared to June 2008.
 - This was a decrease of 58 GWh, or 0.8%, compared to the previous month.
 - Geoth./Wind/Solar/Other production showed the most significant percentage change compared to the previous month with a decrease of 9.3%, or 10 GWh.
- Total production for the year-to-date was 42 081 GWh. Comparing this to the same period last year shows that:
 - Total production was higher by 2 535 GWh, or 6.4%.
 - Geoth./Wind/Solar/Other production showed the largest percentage change by fuel type, being 17% higher.
 - Trade volume decreased by 3 729 GWh, or 29%.

Electricity Production Compared to Previous Year



'Year to Date' Comparison of Production by Fuel Type



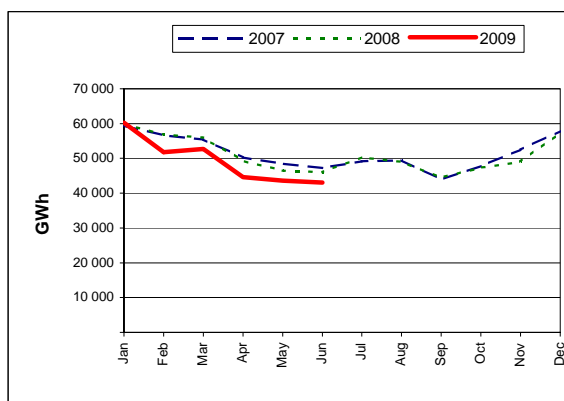
COUNTRY NOTES:

CANADA

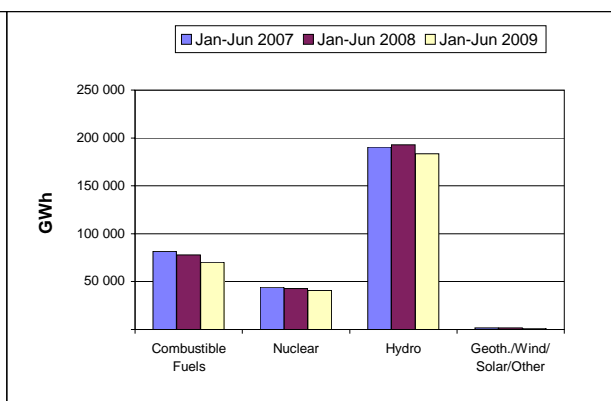
| | GWh | | | | | | | |
|--------------------------------|---------------|---------------|-------------------|---------------|---------------|----------------|--------------|------------------|
| | Jun-09 | Jun-08 | The last 3 months | | | Year-to-Date | | Past Year |
| | | % change | Mar-09 | Apr-09 | May-09 | Jan-Jun 2009 | % change | 2008 |
| + Combustible Fuels | 9 720 | -16.3% | 12 366 | 10 572 | 10 468 | 70 089 | -9.8% | 151 931 e |
| + Nuclear | 6 716 | 1.1% | 7 936 | 6 049 | 4 826 | 40 936 | -4.0% | 88 612 |
| + Hydro | 26 356 | -4.3% | 32 210 | 27 789 | 28 031 | 183 557 | -4.8% | 368 765 |
| + Geoth./Wind/Solar/Other | 237 | -8.8% | 240 | 239 | 238 | 1 437 | -8.8% | 3 051 |
| = Indigenous Production | 43 029 | -6.6% | 52 752 | 44 649 | 43 563 | 296 019 | -6.0% | 612 359 e |
| + Imports | 1 571 | -53.0% | 1 688 | 2 128 | 1 361 | 10 376 | -29.4% | 25 188 |
| - Exports | 5 832 | -7.4% | 3 944 | 3 653 | 4 407 | 26 057 | -14.1% | 57 676 |
| = Electricity Supplied | 38 768 | -10.0% | 50 496 | 43 124 | 40 517 | 280 338 | -6.3% | 579 871 e |

- Electricity production was 43 029 GWh in June 2009.
 - This was lower by 3 020 GWh, or 6.6%, compared to June 2008.
 - This was a decrease of 534 GWh, or 1.2%, compared to the previous month.
 - Nuclear production showed the most significant percentage change compared to the previous month with an increase of 39.2%, or 1 890 GWh.
- Total production for the year-to-date was 296 019 GWh. Comparing this to the same period last year shows that:
 - Total production was lower by 18 728 GWh, or 6%.
 - Combustible Fuels production showed the largest percentage change by fuel type, being 9.8% lower.
 - Trade volume decreased by 8 590 GWh, or 19.1%.

Electricity Production Compared to Previous Year



'Year to Date' Comparison of Production by Fuel Type



COUNTRY NOTES:

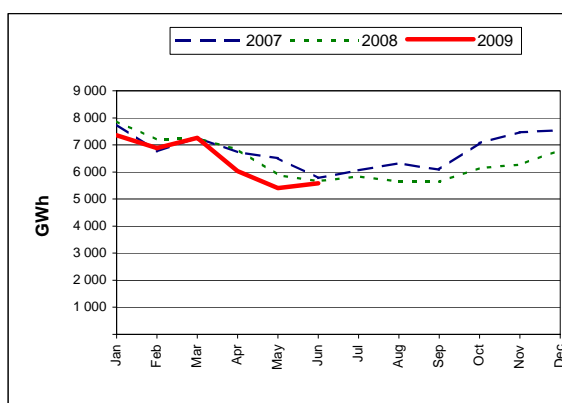
- Geoth./Wind/Solar/Other production is estimated by the IEA Secretariat.

CZECH REPUBLIC

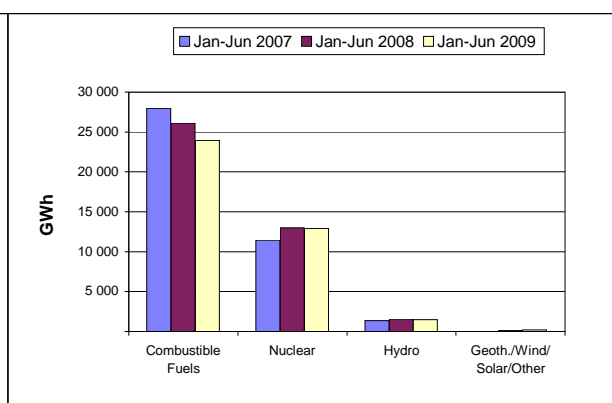
| | GWh | | | | | | | |
|--------------------------------|--------------|--------------|-------------------|--------------|--------------|---------------|--------------|---------------|
| | Jun-09 | Jun-08 | The last 3 months | | | Year-to-Date | | Past Year |
| | | % change | Mar-09 | Apr-09 | May-09 | Jan-Jun 2009 | % change | 2008 |
| + Combustible Fuels | 3 356 | -5.5% | 4 477 | 3 718 | 3 209 | 23 949 | -8.2% | 49 502 |
| + Nuclear | 1 942 | 0.2% | 2 391 | 1 990 | 1 946 | 12 909 | -0.6% | 24 976 |
| + Hydro | 246 | 52.8% | 349 | 299 | 220 | 1 470 | -2.9% | 2 364 |
| + Geoth./Wind/Solar/Other | 34 | 183.3% | 41 | 28 | 30 | 184 | 47.2% | 259 |
| = Indigenous Production | 5 578 | -1.5% | 7 258 | 6 035 | 5 405 | 38 512 | -5.4% | 77 101 |
| + Imports | 491 | -9.9% | 682 | 424 | 492 | 3 911 | -8.2% | 8 523 |
| - Exports | 1 534 | 9.9% | 2 181 | 1 784 | 1 273 | 10 846 | -2.5% | 19 989 |
| = Electricity Supplied | 4 535 | -5.8% | 5 759 | 4 675 | 4 624 | 31 577 | -6.8% | 65 635 |

- Electricity production was 5 578 GWh in June 2009.
 - This was lower by 86 GWh, or 1.5%, compared to June 2008.
 - This was an increase of 173 GWh, or 3.2%, compared to the previous month.
 - Geoth./Wind/Solar/Other production showed the most significant percentage change compared to the previous month with an increase of 13.3%, or 4 GWh.
- Total production for the year-to-date was 38 512 GWh. Comparing this to the same period last year shows that:
 - Total production was lower by 2 213 GWh, or 5.4%.
 - Geoth./Wind/Solar/Other production showed the largest percentage change by fuel type, being 47.2% higher.
 - Trade volume decreased by 621 GWh, or 4%.

Electricity Production Compared to Previous Year



'Year to Date' Comparison of Production by Fuel Type



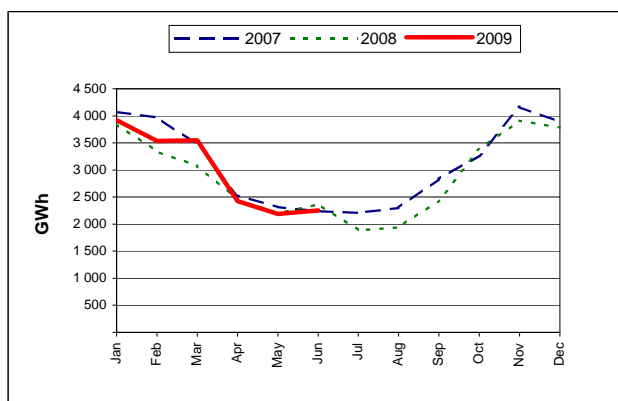
COUNTRY NOTES:

DENMARK

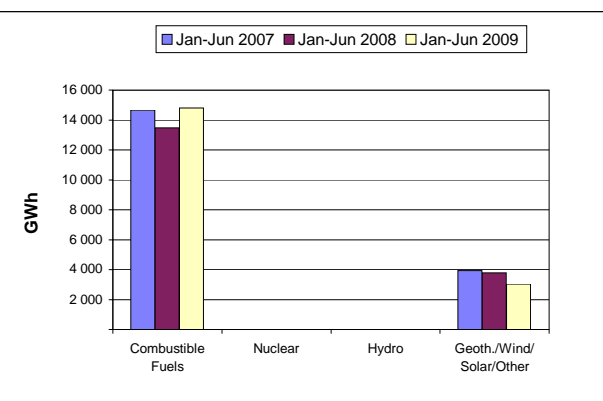
| | GWh | | | | | | | |
|--------------------------------|--------------|--------------|-------------------|--------------|--------------|---------------|--------------|---------------|
| | Jun-09 | Jun-08 | The last 3 months | | | Year-to-Date | | Past Year |
| | | % change | Mar-09 | Apr-09 | May-09 | Jan-Jun 2009 | % change | 2008 |
| + Combustible Fuels | 1 763 | -3.1% | 2 958 | 2 083 | 1 624 | 14 809 | 9.8% | 27 671 |
| + Nuclear | 0 | 0.0% | 0 | 0 | 0 | 0 | 0.0% | 0 |
| + Hydro | 1 | 0.0% | 2 | 1 | 1 | 9 | -47.1% | 27 |
| + Geoth./Wind/Solar/Other | 490 | -11.2% | 589 | 338 | 563 | 3 048 | -19.6% | 6 929 |
| = Indigenous Production | 2 254 | -5.0% | 3 549 | 2 422 | 2 188 | 17 866 | 3.3% | 34 627 |
| + Imports | 982 | -8.8% | 860 | 1 049 | 1 144 | 5 678 | -8.9% | 12 813 |
| - Exports | 606 | -14.2% | 1 285 | 806 | 684 | 6 037 | 13.9% | 11 361 |
| = Electricity Supplied | 2 630 | -4.2% | 3 124 | 2 665 | 2 648 | 17 507 | -4.0% | 36 079 |

- Electricity production was 2 254 GWh in June 2009.
 - This was lower by 119 GWh, or 5%, compared to June 2008.
 - This was an increase of 66 GWh, or 3%, compared to the previous month.
 - Geoth./Wind/Solar/Other production showed the most significant percentage change compared to the previous month with a decrease of 13%, or 73 GWh.
- Total production for the year-to-date was 17 866 GWh. Comparing this to the same period last year shows that:
 - Total production was higher by 570 GWh, or 3.3%.
 - Hydro production showed the largest percentage change by fuel type, being 47.1% lower.
 - Trade volume increased by 180 GWh, or 1.6%.

Electricity Production Compared to Previous Year



'Year to Date' Comparison of Production by Fuel Type



COUNTRY NOTES:

- Does not include Greenland and the Faroe Islands.

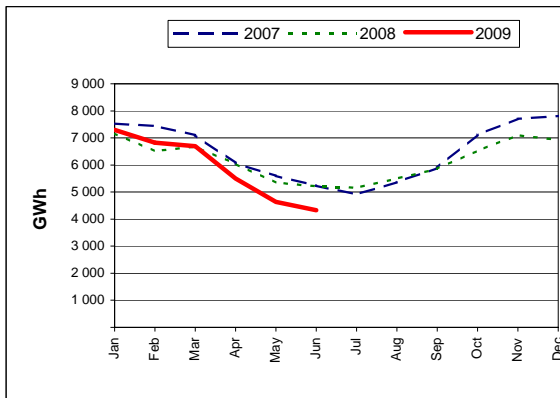
FINLAND

GWh

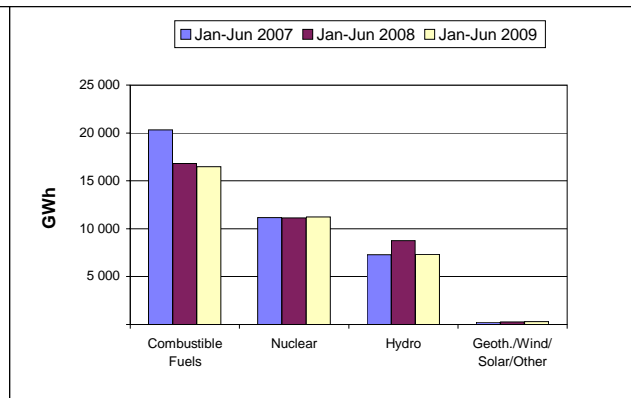
| | Jun-09 | Jun-08 % change | The last 3 months | | | Year-to-Date | | Past Year 2008 |
|--------------------------------|--------------|--------------------|-------------------|--------------|--------------|---------------|--------------|-------------------|
| | | | Mar-09 | Apr-09 | May-09 | Jan-Jun 2009 | % change | |
| + Combustible Fuels | 1 432 | -27.9% | 3 334 | 2 420 | 1 757 | 16 462 | -2.1% | 34 573 |
| + Nuclear | 1 922 | 6.7% | 2 026 | 1 956 | 1 472 | 11 223 | 0.7% | 22 043 |
| + Hydro | 942 | -32.4% | 1 281 | 1 072 | 1 358 | 7 307 | -16.4% | 16 873 |
| + Geoth./Wind/Solar/Other | 35 | 6.1% | 49 | 51 | 49 | 290 | 4.7% | 578 |
| = Indigenous Production | 4 331 | -16.9% | 6 690 | 5 499 | 4 636 | 35 282 | -4.6% | 74 067 |
| + Imports | 1 127 | 12.8% | 1 290 | 1 296 | 1 410 | 7 615 | -11.0% | 16 108 |
| - Exports | 295 | 120.1% | 353 | 380 | 81 | 2 085 | 417.4% | 3 334 |
| = Electricity Supplied | 5 163 | -15.1% | 7 627 | 6 415 | 5 965 | 40 812 | -9.6% | 86 841 |

- Electricity production was 4 331 GWh in June 2009.
 - This was lower by 883 GWh, or 16.9%, compared to June 2008.
 - This was a decrease of 305 GWh, or 6.6%, compared to the previous month.
 - Hydro production showed the most significant percentage change compared to the previous month with a decrease of 30.6%, or 416 GWh.
- Total production for the year-to-date was 35 282 GWh. Comparing this to the same period last year shows that:
 - Total production was lower by 1 689 GWh, or 4.6%.
 - Hydro production showed the largest percentage change by fuel type, being 16.4% lower.
 - Trade volume increased by 742 GWh, or 8.3%.

Electricity Production Compared to Previous Year



'Year to Date' Comparison of Production by Fuel Type



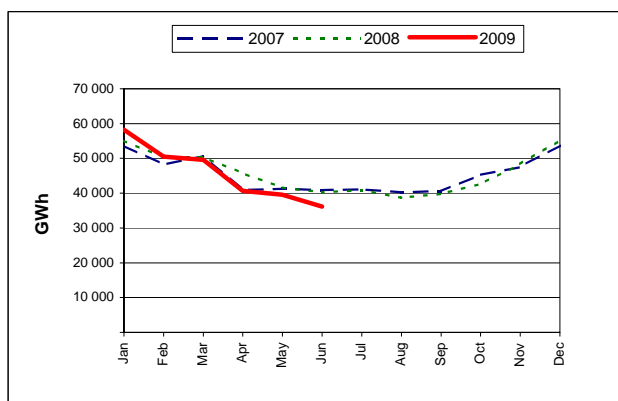
COUNTRY NOTES:

FRANCE

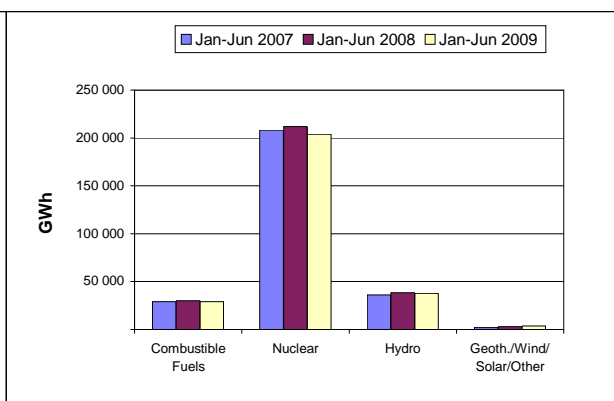
| | GWh | | | | | | | |
|--------------------------------|---------------|---------------|-------------------|---------------|---------------|----------------|--------------|----------------|
| | Jun-09 | Jun-08 | The last 3 months | | | Year-to-Date | | Past Year |
| | | % change | Mar-09 | Apr-09 | May-09 | Jan-Jun 2009 | % change | 2008 |
| + Combustible Fuels | 2 275 | -25.5% | 6 631 | 2 672 | 2 034 | 29 194 | -3.3% | 56 942 |
| + Nuclear | 27 136 | -4.9% | 35 941 | 30 870 | 29 892 | 204 005 | -3.7% | 418 441 |
| + Hydro | 6 314 | -23.9% | 6 184 | 6 592 | 7 045 | 37 849 | -1.4% | 67 585 |
| + Geoth./Wind/Solar/Other | 450 | 18.4% | 817 | 518 | 596 | 3 648 | 19.7% | 6 252 |
| = Indigenous Production | 36 175 | -10.1% | 49 573 | 40 652 | 39 567 | 274 696 | -3.1% | 549 220 |
| + Imports | 1 692 | 238.4% | 926 | 1 158 | 777 | 7 414 | 84.4% | 10 683 |
| - Exports | 3 508 | -38.5% | 5 350 | 3 869 | 5 307 | 26 753 | -12.5% | 58 690 |
| = Electricity Supplied | 34 359 | -2.0% | 45 149 | 37 941 | 35 037 | 255 357 | -0.6% | 501 213 |

- Electricity production was 36 175 GWh in June 2009.
 - This was lower by 4 076 GWh, or 10.1%, compared to June 2008.
 - This was a decrease of 3 392 GWh, or 8.6%, compared to the previous month.
 - Geoth./Wind/Solar/Other production showed the most significant percentage change compared to the previous month with a decrease of 24.5%, or 146 GWh.
- Total production for the year-to-date was 274 696 GWh. Comparing this to the same period last year shows that:
 - Total production was lower by 8 821 GWh, or 3.1%.
 - Geoth./Wind/Solar/Other production showed the largest percentage change by fuel type, being 19.7% higher.
 - Trade volume decreased by 413 GWh, or 1.2%.

Electricity Production Compared to Previous Year



'Year to Date' Comparison of Production by Fuel Type



COUNTRY NOTES:

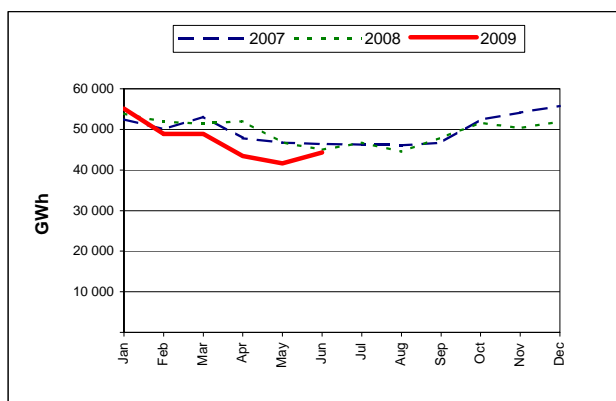
- The share of electricity production from independent power producers is estimated by the IEA Secretariat.
- Includes Monaco but excludes the French overseas territories Guadeloupe, Martinique, Guyane, Reunion, St.-Pierre and Miquelon, New Caledonia and French Polynesia.

GERMANY

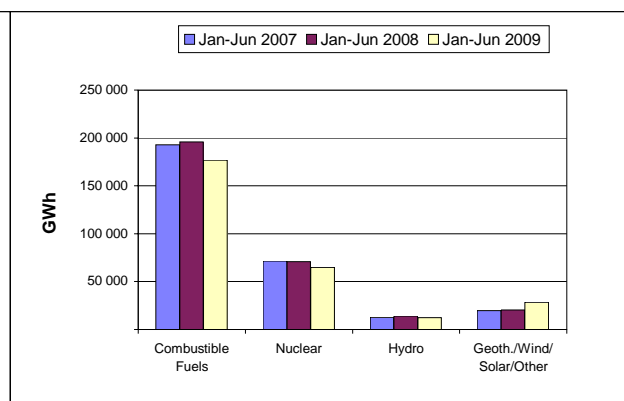
| | GWh | | | | | | | |
|--------------------------------|---------------|--------------|-------------------|---------------|---------------|----------------|--------------|------------------|
| | Jun-09 | Jun-08 | The last 3 months | | | Year-to-Date | | Past Year |
| | | % change | Mar-09 | Apr-09 | May-09 | Jan-Jun 2009 | % change | 2008 |
| + Combustible Fuels | 27 534 | -4.5% | 31 083 | 25 788 | 24 193 | 176 861 | -9.7% | 383 162 e |
| + Nuclear | 9 467 | -6.8% | 11 063 | 10 463 | 10 076 | 64 682 | -8.7% | 140 831 |
| + Hydro | 2 247 | -6.4% | 2 054 | 2 368 | 2 424 | 12 286 | -12.9% | 26 123 |
| + Geoth./Wind/Solar/Other | 5 057 | 39.2% | 4 662 | 4 793 | 4 925 | 28 365 | 39.2% | 44 400 |
| = Indigenous Production | 44 305 | -1.6% | 48 862 | 43 412 | 41 618 | 282 194 | -6.3% | 594 516 e |
| + Imports | 3 450 | -18.8% | 3 980 | 3 607 | 4 313 | 22 900 | 11.5% | 41 670 |
| - Exports | 4 017 | 31.5% | 4 575 | 3 981 | 3 056 | 27 041 | -18.3% | 61 699 |
| = Electricity Supplied | 43 738 | -5.3% | 48 267 | 43 038 | 42 875 | 278 053 | -3.7% | 574 487 e |

- Electricity production was 44 305 GWh in June 2009.
 - This was lower by 708 GWh, or 1.6%, compared to June 2008.
 - This was an increase of 2 687 GWh, or 6.5%, compared to the previous month.
 - Combustible Fuels production showed the most significant percentage change compared to the previous month with an increase of 13.8%, or 3 341 GWh.
- Total production for the year-to-date was 282 194 GWh. Comparing this to the same period last year shows that:
 - Total production was lower by 19 017 GWh, or 6.3%.
 - Geoth./Wind/Solar/Other production showed the largest percentage change by fuel type, being 39.2% higher.
 - Trade volume decreased by 3 701 GWh, or 6.9%.

Electricity Production Compared to Previous Year



'Year to Date' Comparison of Production by Fuel Type



COUNTRY NOTES:

- Net production is estimated from monthly submission of gross production.
- Geoth./Wind/Solar/Other production is estimated by the IEA Secretariat.

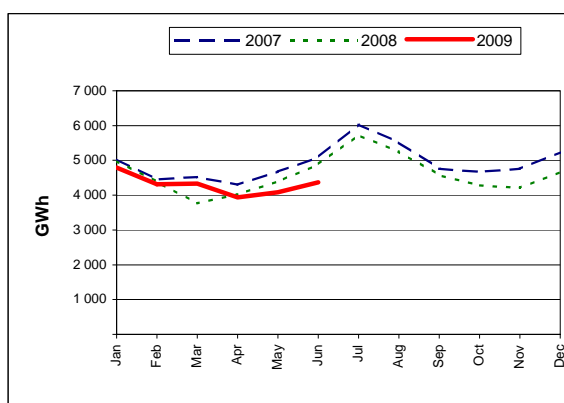
GREECE

GWh

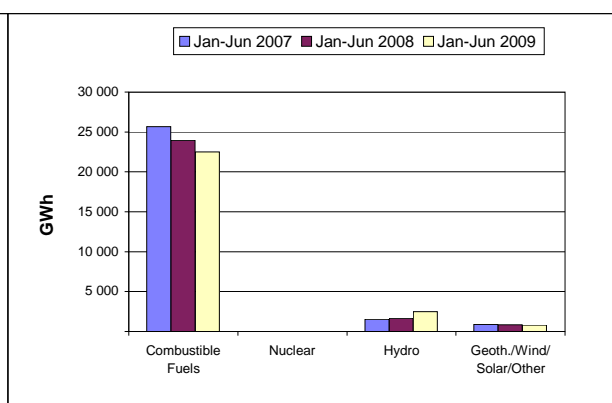
| | Jun-09 | Jun-08 % change | The last 3 months | | | Year-to-Date | | Past Year 2008 |
|--------------------------------|--------------|--------------------|-------------------|--------------|--------------|---------------|---------------|-------------------|
| | | | Mar-09 | Apr-09 | May-09 | Jan-Jun 2009 | % change | |
| + Combustible Fuels | 3 900 | -10.4% | 3 642 | 3 306 | 3 636 | 22 512 | -6.1% | 50 177 e |
| + Nuclear | 0 | 0.0% | 0 | 0 | 0 | 0 | 0.0% | 0 |
| + Hydro | 339 | -13.5% | 550 | 495 | 318 | 2 505 | 52.7% | 3 314 |
| + Geoth./Wind/Solar/Other | 132 | -2.9% | 137 | 135 | 134 | 816 | -2.9% | 1 663 |
| = Indigenous Production | 4 371 | -10.4% | 4 329 | 3 936 | 4 088 | 25 833 | -2.3% | 55 154 e |
| + Imports | 497 | -38.7% | 957 | 296 | 213 | 3 011 | -20.7% | 7 577 |
| - Exports | 23 | 0.0% | 508 | 369 | 231 | 2 608 | 252.9% | 1 963 |
| = Electricity Supplied | 4 845 | -14.9% | 4 778 | 3 863 | 4 070 | 26 236 | -11.1% | 60 768 e |

- Electricity production was 4 371 GWh in June 2009.
 - This was lower by 509 GWh, or 10.4%, compared to June 2008.
 - This was an increase of 283 GWh, or 6.9%, compared to the previous month.
 - Combustible Fuels production showed the most significant percentage change compared to the previous month with an increase of 7.3%, or 264 GWh.
- Total production for the year-to-date was 25 833 GWh. Comparing this to the same period last year shows that:
 - Total production was lower by 609 GWh, or 2.3%.
 - Hydro production showed the largest percentage change by fuel type, being 52.7% higher.
 - Trade volume increased by 1 082 GWh, or 23.8%.

Electricity Production Compared to Previous Year



'Year to Date' Comparison of Production by Fuel Type



COUNTRY NOTES:

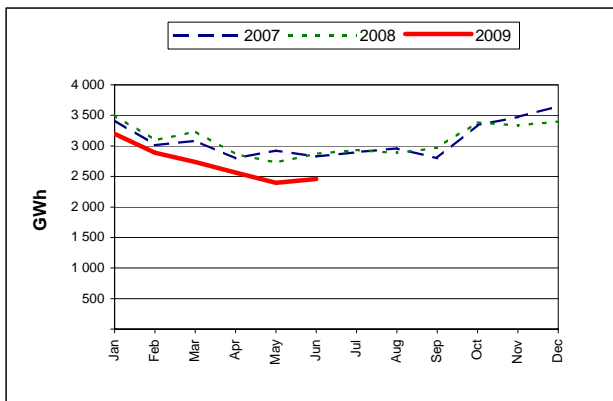
HUNGARY

GWh

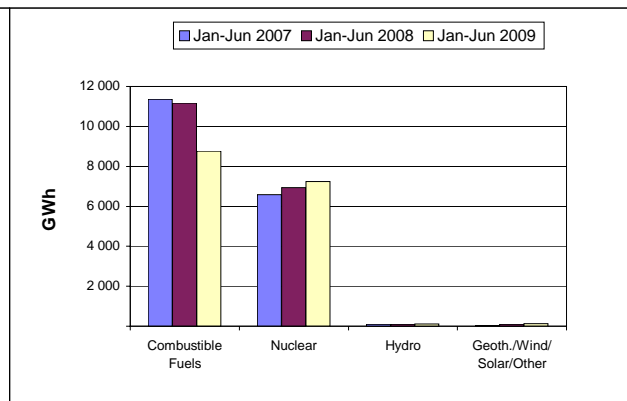
| | Jun-09 | Jun-08 % change | The last 3 months | | | Year-to-Date | | Past Year 2008 |
|--------------------------------|--------------|--------------------|-------------------|--------------|--------------|---------------|---------------|-------------------|
| | | | Mar-09 | Apr-09 | May-09 | Jan-Jun 2009 | % change | |
| + Combustible Fuels | 1 132 | -37.8% | 1 432 | 1 507 | 1 348 | 8 756 | -21.6% | 22 946 |
| + Nuclear | 1 279 | 26.1% | 1 267 | 1 021 | 1 004 | 7 248 | 4.4% | 13 881 |
| + Hydro | 24 | 4.3% | 13 | 16 | 20 | 105 | 1.0% | 208 |
| + Geoth./Wind/Solar/Other | 25 | 38.9% | 22 | 20 | 26 | 134 | 38.1% | 202 |
| = Indigenous Production | 2 460 | -14.4% | 2 734 | 2 564 | 2 398 | 16 243 | -11.3% | 37 237 |
| + Imports | 868 | 3.1% | 1 224 | 746 | 736 | 5 416 | -22.9% | 12 774 |
| - Exports | 385 | 3.8% | 623 | 398 | 148 | 2 775 | -39.3% | 8 872 |
| = Electricity Supplied | 2 943 | -12.0% | 3 335 | 2 912 | 2 986 | 18 884 | -9.1% | 41 139 |

- Electricity production was 2 460 GWh in June 2009.
 - This was lower by 415 GWh, or 14.4%, compared to June 2008.
 - This was an increase of 62 GWh, or 2.6%, compared to the previous month.
 - Nuclear production showed the most significant percentage change compared to the previous month with an increase of 27.4%, or 275 GWh.
- Total production for the year-to-date was 16 243 GWh. Comparing this to the same period last year shows that:
 - Total production was lower by 2 069 GWh, or 11.3%.
 - Geoth./Wind/Solar/Other production showed the largest percentage change by fuel type, being 38.1% higher.
 - Trade volume decreased by 3 411 GWh, or 29.4%.

Electricity Production Compared to Previous Year



'Year to Date' Comparison of Production by Fuel Type



COUNTRY NOTES:

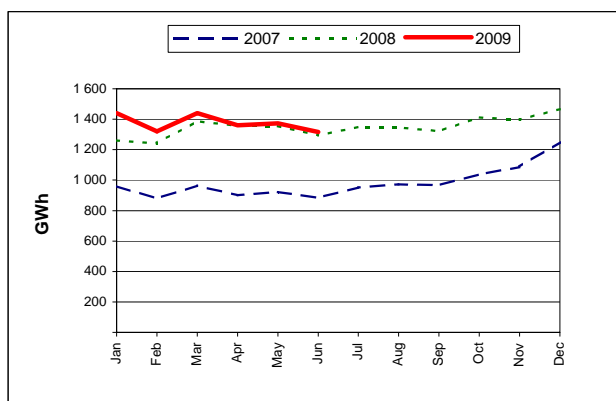
- Net production is estimated from monthly submission of gross production.

ICELAND

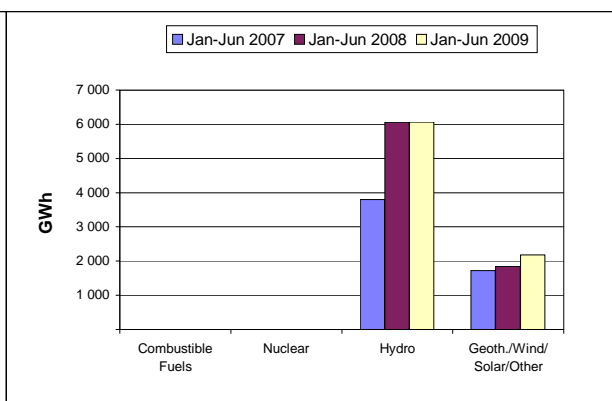
| | GWh | | | | | | | |
|--------------------------------|--------------|-------------|-------------------|--------------|--------------|--------------|-------------|---------------|
| | Jun-09 | Jun-08 | The last 3 months | | | Year-to-Date | | Past Year |
| | | % change | Mar-09 | Apr-09 | May-09 | Jan-Jun 2009 | % change | 2008 |
| + Combustible Fuels | 0 | 0.0% | 0 | 0 | 0 | 0 | 0.0% | 0 |
| + Nuclear | 0 | 0.0% | 0 | 0 | 0 | 0 | 0.0% | 0 |
| + Hydro | 996 | -2.4% | 1 052 | 987 | 1 031 | 6 067 | 0.1% | 12 306 |
| + Geoth./Wind/Solar/Other | 321 | 16.7% | 388 | 373 | 342 | 2 184 | 18.4% | 3 896 |
| = Indigenous Production | 1 317 | 1.7% | 1 440 | 1 360 | 1 373 | 8 251 | 4.4% | 16 202 |
| + Imports | 0 | 0.0% | 0 | 0 | 0 | 0 | 0.0% | 0 |
| - Exports | 0 | 0.0% | 0 | 0 | 0 | 0 | 0.0% | 0 |
| = Electricity Supplied | 1 317 | 1.7% | 1 440 | 1 360 | 1 373 | 8 251 | 4.4% | 16 202 |

- Electricity production was 1 317 GWh in June 2009.
 - This was higher by 22 GWh, or 1.7%, compared to June 2008.
 - This was a decrease of 56 GWh, or 4.1%, compared to the previous month.
 - Geoth./Wind/Solar/Other production showed the most significant percentage change compared to the previous month with a decrease of 6.1%, or 21 GWh.
- Total production for the year-to-date was 8 251 GWh. Comparing this to the same period last year shows that:
 - Total production was higher by 347 GWh, or 4.4%.
 - Geoth./Wind/Solar/Other production showed the largest percentage change by fuel type, being 18.4% higher.

Electricity Production Compared to Previous Year



'Year to Date' Comparison of Production by Fuel Type



COUNTRY NOTES:

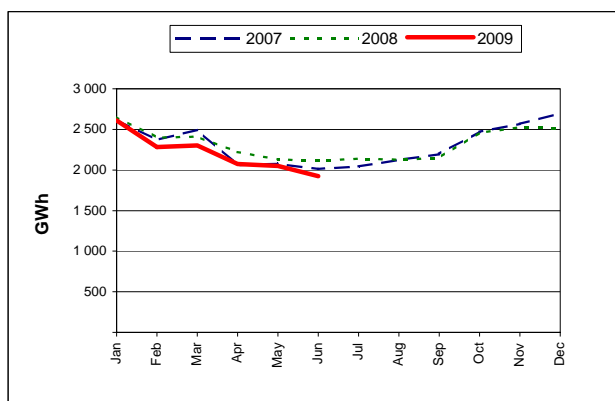
- Net production is estimated from monthly submission of gross production.

IRELAND

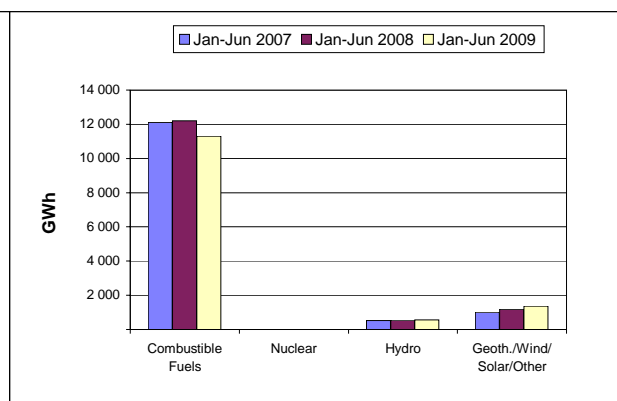
| | GWh | | | | | | | |
|--------------------------------|--------------|--------------|-------------------|--------------|--------------|---------------|--------------|---------------|
| | Jun-09 | Jun-08 | The last 3 months | | | Year-to-Date | | Past Year |
| | | % change | Mar-09 | Apr-09 | May-09 | Jan-Jun 2009 | % change | 2008 |
| + Combustible Fuels | 1 727 | -10.4% | 1 924 | 1 795 | 1 668 | 11 307 | -7.4% | 24 174 |
| + Nuclear | 0 | 0.0% | 0 | 0 | 0 | 0 | 0.0% | 0 |
| + Hydro | 53 | 29.3% | 80 | 81 | 104 | 559 | 1.3% | 1 276 |
| + Geoth./Wind/Solar/Other | 143 | 0.0% | 299 | 198 | 277 | 1 373 | 16.3% | 2 409 |
| = Indigenous Production | 1 923 | -8.9% | 2 303 | 2 074 | 2 049 | 13 239 | -5.0% | 27 859 |
| + Imports | 87 | 180.6% | 90 | 87 | 100 | 466 | -2.5% | 754 |
| - Exports | 12 | -72.1% | 11 | 10 | 5 | 103 | -5.5% | 303 |
| = Electricity Supplied | 1 998 | -4.9% | 2 382 | 2 151 | 2 144 | 13 602 | -4.9% | 28 310 |

- Electricity production was 1 923 GWh in June 2009.
 - This was lower by 189 GWh, or 8.9%, compared to June 2008.
 - This was a decrease of 126 GWh, or 6.1%, compared to the previous month.
 - Hydro production showed the most significant percentage change compared to the previous month with a decrease of 49%, or 51 GWh.
- Total production for the year-to-date was 13 239 GWh. Comparing this to the same period last year shows that:
 - Total production was lower by 699 GWh, or 5%.
 - Geoth./Wind/Solar/Other production showed the largest percentage change by fuel type, being 16.3% higher.
 - Trade volume decreased by 18 GWh, or 3.1%.

Electricity Production Compared to Previous Year



'Year to Date' Comparison of Production by Fuel Type



COUNTRY NOTES:

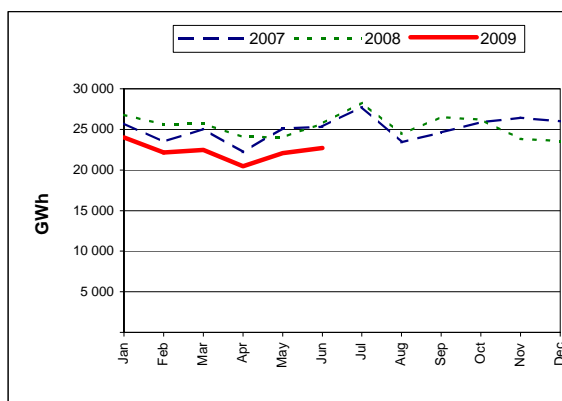
ITALY

GWh

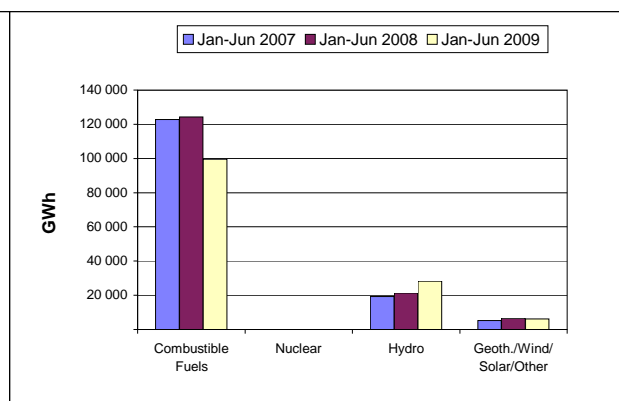
| | Jun-09 | Jun-08 % change | The last 3 months | | | Year-to-Date | | Past Year 2008 |
|--------------------------------|---------------|--------------------|-------------------|---------------|---------------|----------------|---------------|-------------------|
| | | | Mar-09 | Apr-09 | May-09 | Jan-Jun 2009 | % change | |
| + Combustible Fuels | 16 071 | -17.9% | 17 403 | 14 427 | 15 243 | 99 504 | -19.9% | 247 373 |
| + Nuclear | 0 | 0.0% | 0 | 0 | 0 | 0 | 0.0% | 0 |
| + Hydro | 5 681 | 10.2% | 3 990 | 4 988 | 5 740 | 28 244 | 32.5% | 44 916 |
| + Geoth./Wind/Solar/Other | 956 | -8.3% | 1 071 | 1 039 | 1 078 | 6 103 | -6.4% | 12 715 |
| = Indigenous Production | 22 708 | -11.9% | 22 464 | 20 454 | 22 061 | 133 851 | -12.0% | 305 004 |
| + Imports | 3 873 | 28.7% | 4 758 | 4 087 | 3 894 | 24 872 | 11.8% | 42 997 |
| - Exports | 204 | -24.7% | 114 | 179 | 136 | 967 | -45.2% | 3 431 |
| = Electricity Supplied | 26 377 | -7.5% | 27 108 | 24 362 | 25 819 | 157 756 | -8.6% | 344 570 |

- Electricity production was 22 708 GWh in June 2009.
 - This was lower by 3 054 GWh, or 11.9%, compared to June 2008.
 - This was an increase of 647 GWh, or 2.9%, compared to the previous month.
 - Geoth./Wind/Solar/Other production showed the most significant percentage change compared to the previous month with a decrease of 11.3%, or 122 GWh.
- Total production for the year-to-date was 133 851 GWh. Comparing this to the same period last year shows that:
 - Total production was lower by 18 226 GWh, or 12%.
 - Hydro production showed the largest percentage change by fuel type, being 32.5% higher.
 - Trade volume increased by 1 820 GWh, or 7.6%.

Electricity Production Compared to Previous Year



'Year to Date' Comparison of Production by Fuel Type



COUNTRY NOTES:

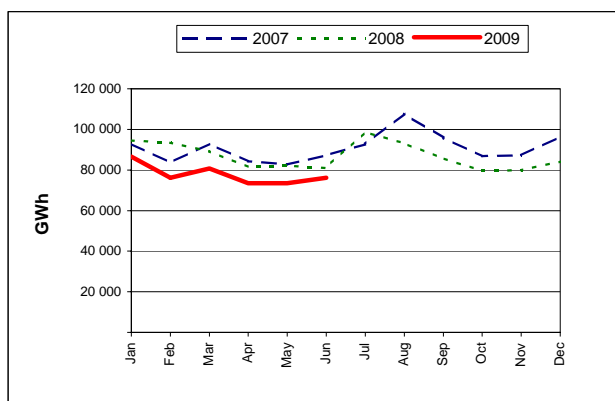
- Includes San Marino and the Vatican.

JAPAN

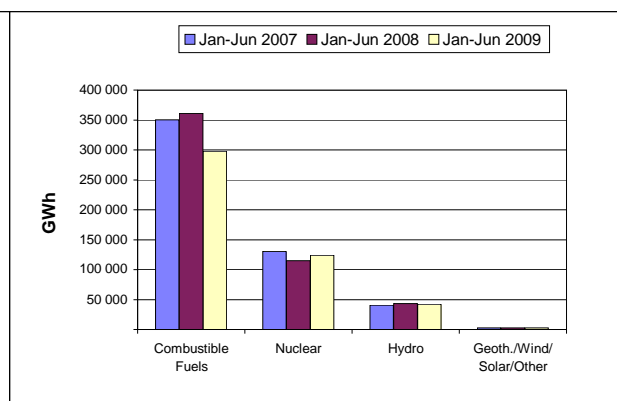
| | GWh | | | | | | | |
|--------------------------------|---------------|--------------------|-------------------|---------------|---------------|----------------|---------------|-------------------|
| | Jun-09 | Jun-08 % change | The last 3 months | | | Year-to-Date | | Past Year 2008 |
| | | | Mar-09 | Apr-09 | May-09 | Jan-Jun 2009 | % change | |
| + Combustible Fuels | 48 573 | -6.9% | 52 479 | 46 560 | 43 914 | 297 857 | -17.5% | 712 331 |
| + Nuclear | 19 595 | 2.8% | 19 934 | 18 937 | 20 570 | 123 915 | 8.0% | 245 283 |
| + Hydro | 7 545 | -20.3% | 7 869 | 7 594 | 8 470 | 42 151 | -3.0% | 80 630 |
| + Geoth./Wind/Solar/Other | 497 | 31.8% | 480 | 431 | 459 | 2 795 | -1.2% | 5 467 |
| = Indigenous Production | 76 210 | -6.0% | 80 762 | 73 522 | 73 413 | 466 718 | -10.6% | 1 043 711 |
| + Imports | 0 | 0.0% | 0 | 0 | 0 | 0 | 0.0% | 0 |
| - Exports | 0 | 0.0% | 0 | 0 | 0 | 0 | 0.0% | 0 |
| = Electricity Supplied | 76 210 | -6.0% | 80 762 | 73 522 | 73 413 | 466 718 | -10.6% | 1 043 711 |

- Electricity production was 76 210 GWh in June 2009.
 - This was lower by 4 888 GWh, or 6%, compared to June 2008.
 - This was an increase of 2 797 GWh, or 3.8%, compared to the previous month.
 - Hydro production showed the most significant percentage change compared to the previous month with a decrease of 10.9%, or 925 GWh.
- Total production for the year-to-date was 466 718 GWh. Comparing this to the same period last year shows that:
 - Total production was lower by 55 473 GWh, or 10.6%.
 - Combustible Fuels production showed the largest percentage change by fuel type, being 17.5% lower.

Electricity Production Compared to Previous Year



'Year to Date' Comparison of Production by Fuel Type



COUNTRY NOTES:

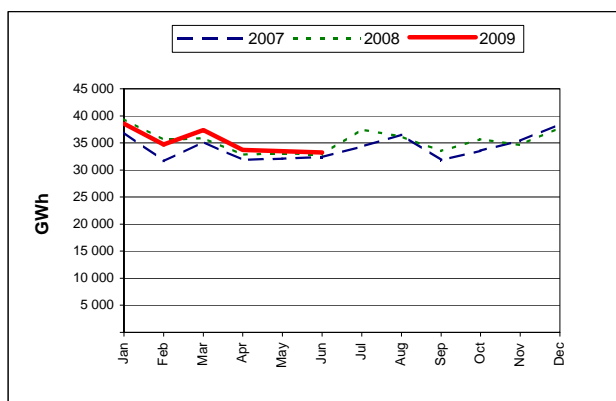
- Net production is estimated based on monthly submission for main producers.
- The breakdown of supplementary production sources is calculated annually by the IEA Secretariat.

KOREA

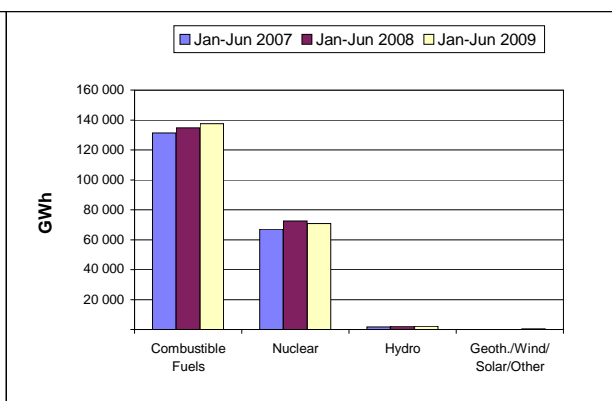
| | GWh | | | | | | | |
|--------------------------------|---------------|--------------------|-------------------|---------------|---------------|----------------|-------------|-------------------|
| | Jun-09 | Jun-08 % change | The last 3 months | | | Year-to-Date | | Past Year 2008 |
| | | | Mar-09 | Apr-09 | May-09 | Jan-Jun 2009 | % change | |
| + Combustible Fuels | 20 461 | -2.5% | 25 234 | 21 866 | 20 585 | 137 561 | 2.1% | 275 074 |
| + Nuclear | 12 162 | 6.6% | 11 783 | 11 444 | 12 325 | 70 825 | -2.4% | 143 912 |
| + Hydro | 541 | 24.4% | 296 | 335 | 495 | 2 241 | 4.2% | 5 492 |
| + Geoth./Wind/Solar/Other | 85 | 54.5% | 78 | 80 | 82 | 475 | 53.7% | 691 |
| = Indigenous Production | 33 249 | 1.1% | 37 391 | 33 725 | 33 487 | 211 102 | 0.6% | 425 169 |
| + Imports | 0 | 0.0% | 0 | 0 | 0 | 0 | 0.0% | 0 |
| - Exports | 0 | 0.0% | 0 | 0 | 0 | 0 | 0.0% | 0 |
| = Electricity Supplied | 33 249 | 1.1% | 37 391 | 33 725 | 33 487 | 211 102 | 0.6% | 425 169 |

- Electricity production was 33 249 GWh in June 2009.
 - This was higher by 360 GWh, or 1.1%, compared to June 2008.
 - This was a decrease of 238 GWh, or 0.7%, compared to the previous month.
 - Hydro production showed the most significant percentage change compared to the previous month with an increase of 9.3%, or 46 GWh.
- Total production for the year-to-date was 211 102 GWh. Comparing this to the same period last year shows that:
 - Total production was higher by 1 302 GWh, or 0.6%.
 - Geoth./Wind/Solar/Other production showed the largest percentage change by fuel type, being 53.7% higher.

Electricity Production Compared to Previous Year



'Year to Date' Comparison of Production by Fuel Type



COUNTRY NOTES:

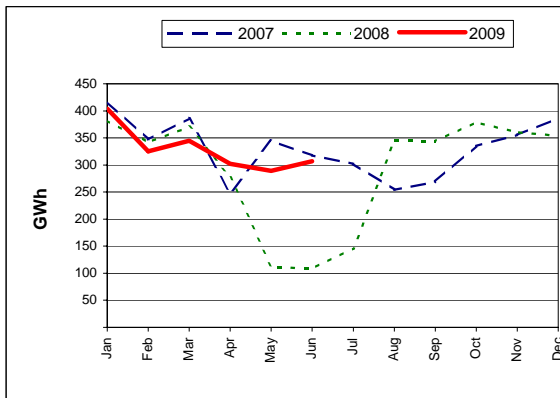
- The share of electricity production from autoproducers is estimated by the IEA Secretariat.
- Net production is estimated from monthly submission of gross production.
- Geoth./Wind/Solar/Other production is estimated by the IEA Secretariat.
- Production data for June 2009 were estimated by the IEA Secretariat.

LUXEMBOURG

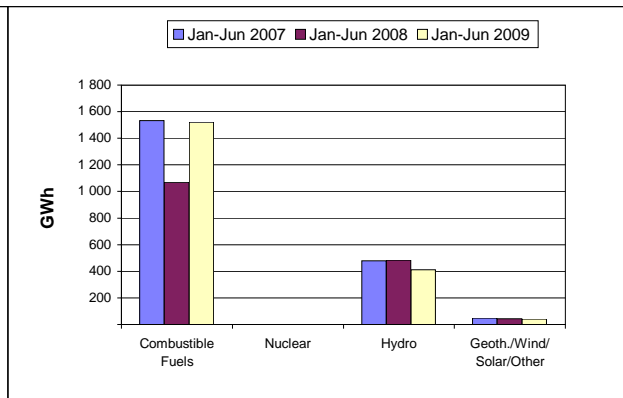
| | GWh | | | | | | | |
|--------------------------------|------------|---------------|-------------------|------------|------------|--------------|---------------|--------------|
| | Jun-09 | Jun-08 | The last 3 months | | | Year-to-Date | | Past Year |
| | | % change | Mar-09 | Apr-09 | May-09 | Jan-Jun 2009 | % change | 2008 |
| + Combustible Fuels | 250 | 762.1% | 253 | 240 | 231 | 1 520 | 42.3% | 2 486 |
| + Nuclear | 0 | 0.0% | 0 | 0 | 0 | 0 | 0.0% | 0 |
| + Hydro | 52 | -31.6% | 81 | 57 | 53 | 412 | -14.7% | 955 |
| + Geoth./Wind/Solar/Other | 5 | 25.0% | 11 | 5 | 5 | 40 | -7.0% | 82 |
| = Indigenous Production | 307 | 181.7% | 345 | 302 | 289 | 1 972 | 23.7% | 3 523 |
| + Imports | 446 | -27.0% | 487 | 465 | 466 | 2 906 | -20.4% | 6 830 |
| - Exports | 173 | 143.7% | 231 | 200 | 187 | 1 277 | 15.8% | 2 484 |
| = Electricity Supplied | 580 | -10.6% | 601 | 567 | 568 | 3 601 | -13.1% | 7 869 |

- Electricity production was 307 GWh in June 2009.
 - This was higher by 198 GWh, or 181.7%, compared to June 2008.
 - This was an increase of 18 GWh, or 6.2%, compared to the previous month.
 - Combustible Fuels production showed the most significant percentage change compared to the previous month with an increase of 8.2%, or 19 GWh.
- Total production for the year-to-date was 1 972 GWh. Comparing this to the same period last year shows that:
 - Total production was higher by 378 GWh, or 23.7%.
 - Combustible Fuels production showed the largest percentage change by fuel type, being 42.3% higher.
 - Trade volume decreased by 571 GWh, or 12%.

Electricity Production Compared to Previous Year



'Year to Date' Comparison of Production by Fuel Type



COUNTRY NOTES:

- Production and trade data for June 2009 were estimated by the IEA Secretariat.

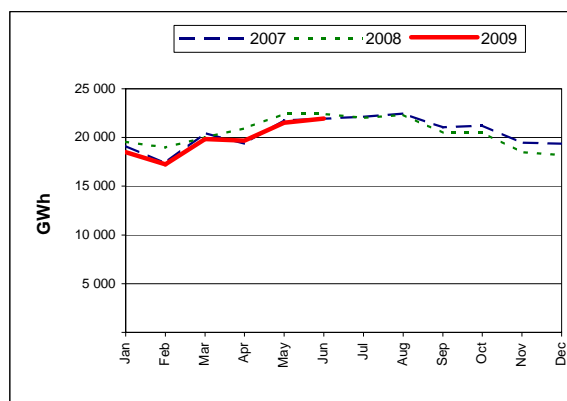
MEXICO

GWh

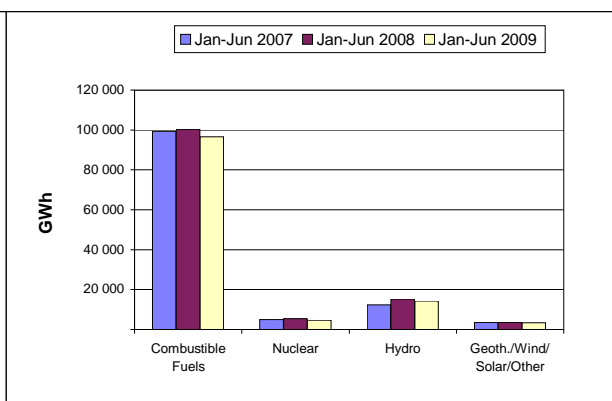
| | Jun-09 | Jun-08 % change | The last 3 months | | | Year-to-Date | | Past Year 2008 |
|--------------------------------|---------------|--------------------|-------------------|---------------|---------------|----------------|--------------|-------------------|
| | | | Mar-09 | Apr-09 | May-09 | Jan-Jun 2009 | % change | |
| + Combustible Fuels | 18 180 | 0.3% | 15 741 | 15 967 | 18 114 | 96 502 | -3.8% | 191 805 |
| + Nuclear | 926 | 10.4% | 937 | 507 | 450 | 4 629 | -15.7% | 9 368 |
| + Hydro | 2 297 | -20.9% | 2 613 | 2 651 | 2 379 | 14 298 | -5.7% | 38 451 |
| + Geoth./Wind/Solar/Other | 538 | -6.3% | 567 | 562 | 568 | 3 318 | -6.6% | 6 981 |
| = Indigenous Production | 21 941 | -2.3% | 19 858 | 19 687 | 21 511 | 118 747 | -4.6% | 246 605 |
| + Imports | 32 | 77.8% | 14 | 60 | 63 | 184 | 201.6% | 351 |
| - Exports | 59 | 0.0% | 104 | 85 | 50 | 626 | -20.5% | 1 453 |
| = Electricity Supplied | 21 914 | -2.2% | 19 768 | 19 662 | 21 524 | 118 305 | -4.4% | 245 503 |

- Electricity production was 21 941 GWh in June 2009.
 - This was lower by 507 GWh, or 2.3%, compared to June 2008.
 - This was an increase of 430 GWh, or 2%, compared to the previous month.
 - Nuclear production showed the most significant percentage change compared to the previous month with an increase of 105.8%, or 476 GWh.
- Total production for the year-to-date was 118 747 GWh. Comparing this to the same period last year shows that:
 - Total production was lower by 5 735 GWh, or 4.6%.
 - Nuclear production showed the largest percentage change by fuel type, being 15.7% lower.
 - Trade volume decreased by 38 GWh, or 4.5%.

Electricity Production Compared to Previous Year



'Year to Date' Comparison of Production by Fuel Type



COUNTRY NOTES:

- The share of electricity production from autoproducers is estimated by the IEA Secretariat.

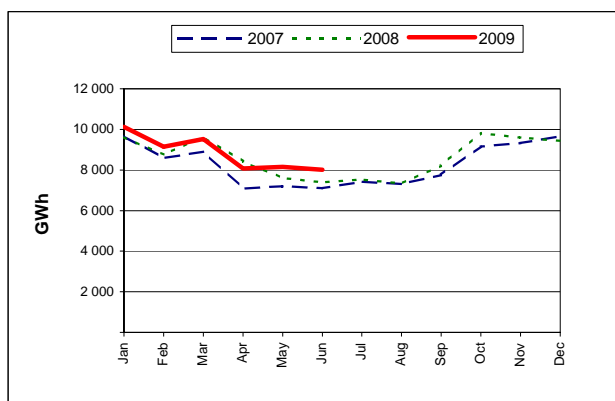
NETHERLANDS

GWh

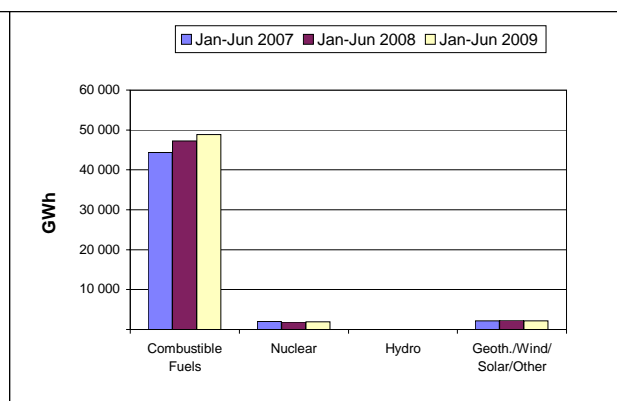
| | Jun-09 | Jun-08 % change | The last 3 months | | | Year-to-Date | | Past Year 2008 |
|--------------------------------|--------------|--------------------|-------------------|--------------|--------------|---------------|--------------|-------------------|
| | | | Mar-09 | Apr-09 | May-09 | Jan-Jun 2009 | % change | |
| + Combustible Fuels | 7 418 | 9.1% | 8 681 | 7 675 | 7 351 | 48 862 | 3.3% | 94 946 |
| + Nuclear | 323 | -6.4% | 364 | 147 | 359 | 1 887 | 4.5% | 3 933 |
| + Hydro | 7 | -30.0% | 14 | 12 | 11 | 64 | 30.6% | 101 |
| + Geoth./Wind/Solar/Other | 264 | 13.8% | 461 | 242 | 426 | 2 202 | -4.3% | 4 446 |
| = Indigenous Production | 8 012 | 8.4% | 9 520 | 8 076 | 8 147 | 53 015 | 3.1% | 103 426 |
| + Imports | 1 654 | -27.5% | 1 299 | 1 470 | 1 457 | 8 929 | -33.5% | 25 008 |
| - Exports | 738 | 119.0% | 620 | 520 | 443 | 3 616 | -32.5% | 9 281 |
| = Electricity Supplied | 8 928 | -4.3% | 10 199 | 9 026 | 9 161 | 58 328 | -2.0% | 119 153 |

- Electricity production was 8 012 GWh in June 2009.
 - This was higher by 624 GWh, or 8.4%, compared to June 2008.
 - This was a decrease of 135 GWh, or 1.7%, compared to the previous month.
 - Geoth./Wind/Solar/Other production showed the most significant percentage change compared to the previous month with a decrease of 38%, or 162 GWh.
- Total production for the year-to-date was 53 015 GWh. Comparing this to the same period last year shows that:
 - Total production was higher by 1 578 GWh, or 3.1%.
 - Hydro production showed the largest percentage change by fuel type, being 30.6% higher.
 - Trade volume decreased by 6 234 GWh, or 33.2%.

Electricity Production Compared to Previous Year



'Year to Date' Comparison of Production by Fuel Type



COUNTRY NOTES:

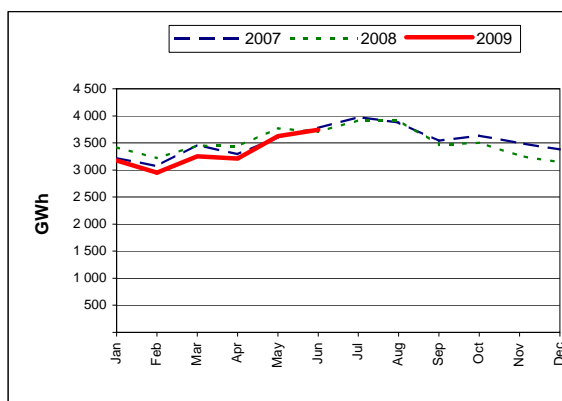
- Excludes Suriname and the Netherlands Antilles.

NEW ZEALAND

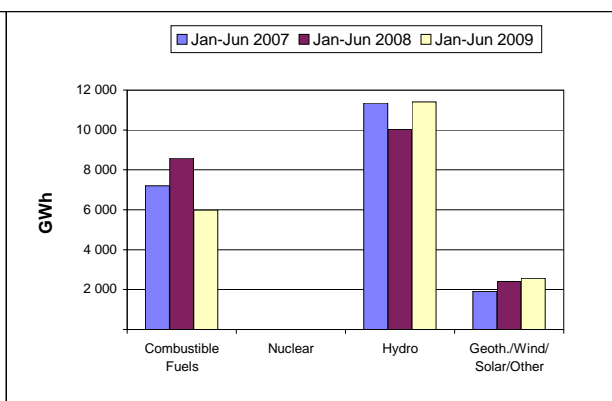
| | GWh | | | | | | | |
|--------------------------------|--------------|--------------------|-------------------|--------------|--------------|---------------|--------------|-------------------|
| | Jun-09 | Jun-08 % change | The last 3 months | | | Year-to-Date | | Past Year 2008 |
| | | | Mar-09 | Apr-09 | May-09 | Jan-Jun 2009 | % change | |
| + Combustible Fuels | 1 210 | -31.4% | 920 | 1 082 | 1 062 | 5 988 | -30.3% | 15 100 |
| + Nuclear | 0 | 0.0% | 0 | 0 | 0 | 0 | 0.0% | 0 |
| + Hydro | 2 111 | 38.3% | 1 889 | 1 728 | 2 102 | 11 411 | 13.7% | 22 091 |
| + Geoth./Wind/Solar/Other | 424 | 1.7% | 441 | 403 | 463 | 2 561 | 6.8% | 5 055 |
| = Indigenous Production | 3 745 | 1.0% | 3 250 | 3 213 | 3 627 | 19 960 | -5.1% | 42 246 |
| + Imports | 0 | 0.0% | 0 | 0 | 0 | 0 | 0.0% | 0 |
| - Exports | 0 | 0.0% | 0 | 0 | 0 | 0 | 0.0% | 0 |
| = Electricity Supplied | 3 745 | 1.0% | 3 250 | 3 213 | 3 627 | 19 960 | -5.1% | 42 246 |

- Electricity production was 3 745 GWh in June 2009.
 - This was higher by 38 GWh, or 1%, compared to June 2008.
 - This was an increase of 118 GWh, or 3.3%, compared to the previous month.
 - Combustible Fuels production showed the most significant percentage change compared to the previous month with an increase of 13.9%, or 148 GWh.
- Total production for the year-to-date was 19 960 GWh. Comparing this to the same period last year shows that:
 - Total production was lower by 1 062 GWh, or 5.1%.
 - Combustible Fuels production showed the largest percentage change by fuel type, being 30.3% lower.

Electricity Production Compared to Previous Year



'Year to Date' Comparison of Production by Fuel Type



COUNTRY NOTES:

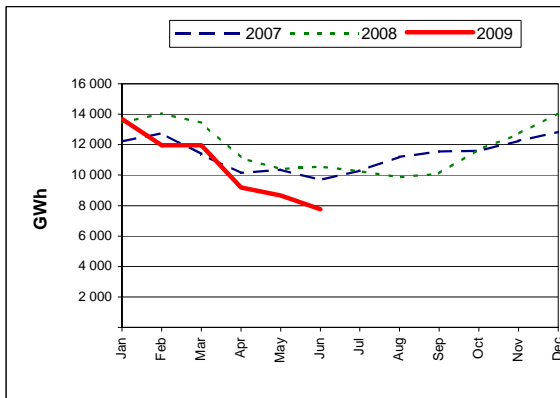
- Monthly electricity production is estimated by the IEA Secretariat with submission by the National Administration, which covers output from major generators including state-owned enterprises (about 80-85% of New Zealand's generation).

NORWAY

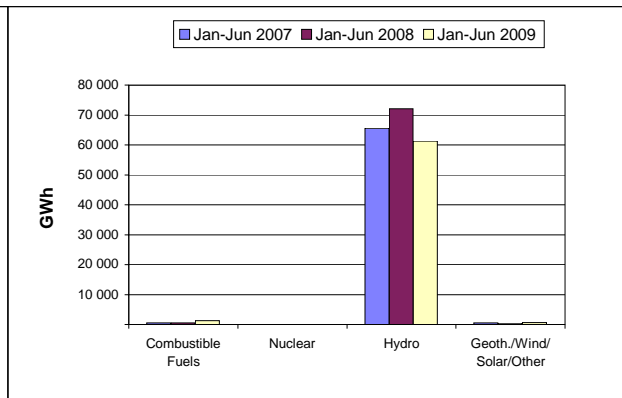
| | GWh | | | | | | | |
|--------------------------------|--------------|---------------|-------------------|--------------|--------------|---------------|---------------|----------------|
| | Jun-09 | Jun-08 | The last 3 months | | | Year-to-Date | | Past Year |
| | | % change | Mar-09 | Apr-09 | May-09 | Jan-Jun 2009 | % change | 2008 |
| + Combustible Fuels | 244 | 177.3% | 313 | 289 | 311 | 1 263 | 121.2% | 1 042 |
| + Nuclear | 0 | 0.0% | 0 | 0 | 0 | 0 | 0.0% | 0 |
| + Hydro | 7 449 | -28.6% | 11 501 | 8 817 | 8 264 | 61 333 | -14.9% | 139 703 |
| + Geoth./Wind/Solar/Other | 55 | -8.3% | 144 | 89 | 89 | 627 | 33.4% | 1 089 |
| = Indigenous Production | 7 748 | -26.8% | 11 958 | 9 195 | 8 664 | 63 223 | -13.5% | 141 834 |
| + Imports | 610 | 408.3% | 606 | 670 | 618 | 3 738 | 94.9% | 3 415 |
| - Exports | 864 | -53.3% | 915 | 754 | 871 | 5 150 | -34.4% | 17 292 |
| = Electricity Supplied | 7 494 | -15.4% | 11 649 | 9 111 | 8 411 | 61 811 | -8.0% | 127 957 |

- Electricity production was 7 748 GWh in June 2009.
 - This was lower by 2 836 GWh, or 26.8%, compared to June 2008.
 - This was a decrease of 916 GWh, or 10.6%, compared to the previous month.
 - Geoth./Wind/Solar/Other production showed the most significant percentage change compared to the previous month with a decrease of 38.2%, or 34 GWh.
- Total production for the year-to-date was 63 223 GWh. Comparing this to the same period last year shows that:
 - Total production was lower by 9 893 GWh, or 13.5%.
 - Combustible Fuels production showed the largest percentage change by fuel type, being 121.2% higher.
 - Trade volume decreased by 877 GWh, or 9%.

Electricity Production Compared to Previous Year



'Year to Date' Comparison of Production by Fuel Type



COUNTRY NOTES:

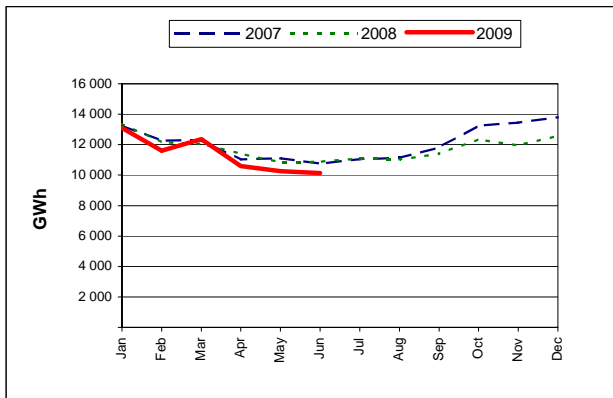
- Net production is estimated from monthly submission of gross production.

POLAND

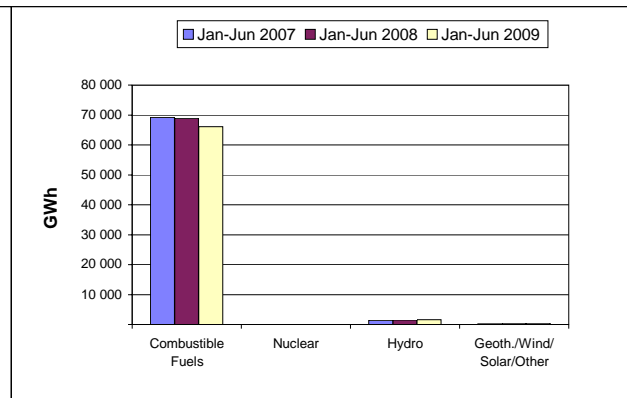
| | GWh | | | | | | | |
|--------------------------------|---------------|--------------|-------------------|---------------|---------------|---------------|--------------|----------------|
| | Jun-09 | Jun-08 | The last 3 months | | | Year-to-Date | | Past Year |
| | | % change | Mar-09 | Apr-09 | May-09 | Jan-Jun 2009 | % change | 2008 |
| + Combustible Fuels | 9 808 | -8.1% | 11 941 | 10 211 | 9 980 | 66 056 | -4.0% | 137 601 |
| + Nuclear | 0 | 0.0% | 0 | 0 | 0 | 0 | 0.0% | 0 |
| + Hydro | 246 | 43.0% | 338 | 333 | 209 | 1 557 | 0.5% | 2 810 |
| + Geoth./Wind/Solar/Other | 86 | 104.8% | 84 | 61 | 78 | 472 | 24.9% | 830 |
| = Indigenous Production | 10 140 | -6.8% | 12 363 | 10 605 | 10 267 | 68 085 | -3.8% | 141 241 |
| + Imports | 476 | 6.0% | 459 | 241 | 484 | 3 205 | -31.1% | 8 481 |
| - Exports | 522 | -17.7% | 926 | 490 | 465 | 4 540 | -10.7% | 9 704 |
| = Electricity Supplied | 10 094 | -5.6% | 11 896 | 10 356 | 10 286 | 66 750 | -5.1% | 140 018 |

- Electricity production was 10 140 GWh in June 2009.
 - This was lower by 741 GWh, or 6.8%, compared to June 2008.
 - This was a decrease of 127 GWh, or 1.2%, compared to the previous month.
 - Hydro production showed the most significant percentage change compared to the previous month with an increase of 17.7%, or 37 GWh.
- Total production for the year-to-date was 68 085 GWh. Comparing this to the same period last year shows that:
 - Total production was lower by 2 681 GWh, or 3.8%.
 - Geoth./Wind/Solar/Other production showed the largest percentage change by fuel type, being 24.9% higher.
 - Trade volume decreased by 1 991 GWh, or 20.4%.

Electricity Production Compared to Previous Year



'Year to Date' Comparison of Production by Fuel Type



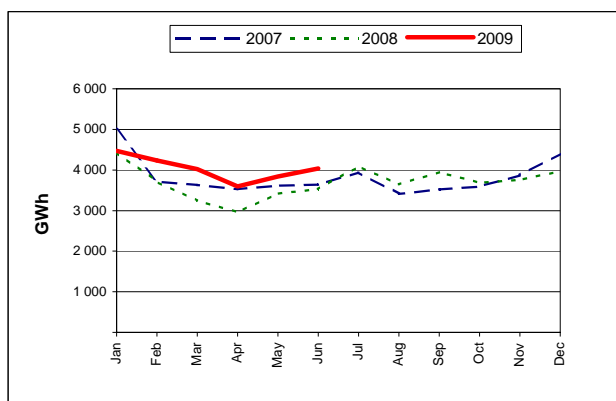
COUNTRY NOTES:

PORTUGAL

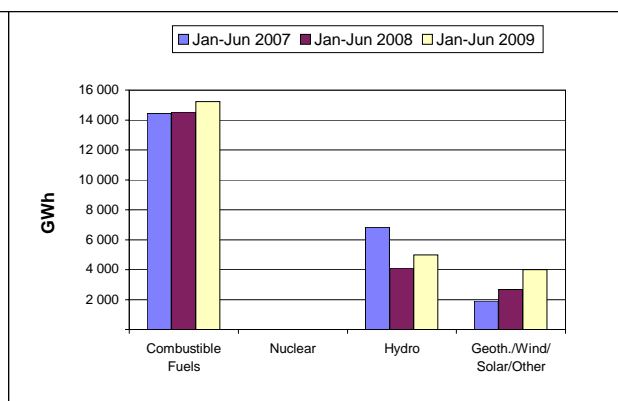
| | GWh | | | | | | | |
|--------------------------------|--------------|--------------------|-------------------|--------------|--------------|---------------|--------------|-------------------|
| | Jun-09 | Jun-08 % change | The last 3 months | | | Year-to-Date | | Past Year 2008 |
| | | | Mar-09 | Apr-09 | May-09 | Jan-Jun 2009 | % change | |
| + Combustible Fuels | 2 822 | 30.8% | 2 529 | 2 372 | 2 603 | 15 221 | 4.8% | 31 343 |
| + Nuclear | 0 | 0.0% | 0 | 0 | 0 | 0 | 0.0% | 0 |
| + Hydro | 490 | -44.9% | 835 | 545 | 530 | 4 975 | 20.9% | 7 162 |
| + Geoth./Wind/Solar/Other | 728 | 50.4% | 656 | 679 | 704 | 4 007 | 50.4% | 5 920 |
| = Indigenous Production | 4 040 | 14.4% | 4 020 | 3 596 | 3 837 | 24 203 | 13.6% | 44 425 |
| + Imports | 725 | -16.8% | 557 | 743 | 711 | 4 057 | -26.4% | 10 744 |
| - Exports | 188 | 116.1% | 294 | 149 | 173 | 1 396 | 164.4% | 1 315 |
| = Electricity Supplied | 4 577 | 6.1% | 4 283 | 4 190 | 4 375 | 26 864 | 2.2% | 53 854 |

- Electricity production was 4 040 GWh in June 2009.
 - This was higher by 509 GWh, or 14.4%, compared to June 2008.
 - This was an increase of 203 GWh, or 5.3%, compared to the previous month.
 - Combustible Fuels production showed the most significant percentage change compared to the previous month with an increase of 8.4%, or 219 GWh.
- Total production for the year-to-date was 24 203 GWh. Comparing this to the same period last year shows that:
 - Total production was higher by 2 897 GWh, or 13.6%.
 - Geoth./Wind/Solar/Other production showed the largest percentage change by fuel type, being 50.4% higher.
 - Trade volume decreased by 590 GWh, or 9.8%.

Electricity Production Compared to Previous Year



'Year to Date' Comparison of Production by Fuel Type



COUNTRY NOTES:

- Geoth./Wind/Solar/Other production is estimated by the IEA Secretariat.
- Includes the Açores and Madeira.
- Production and trade data for June 2009 were estimated by the IEA Secretariat.

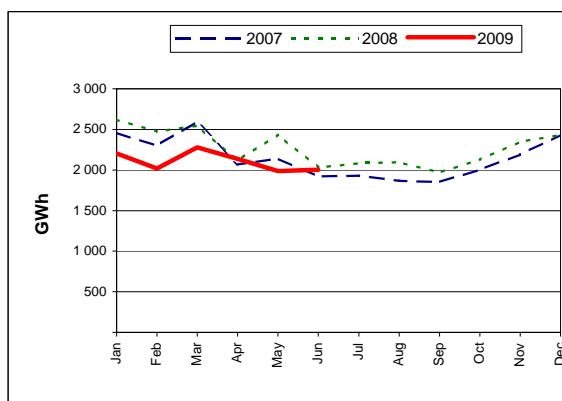
SLOVAK REPUBLIC

GWh

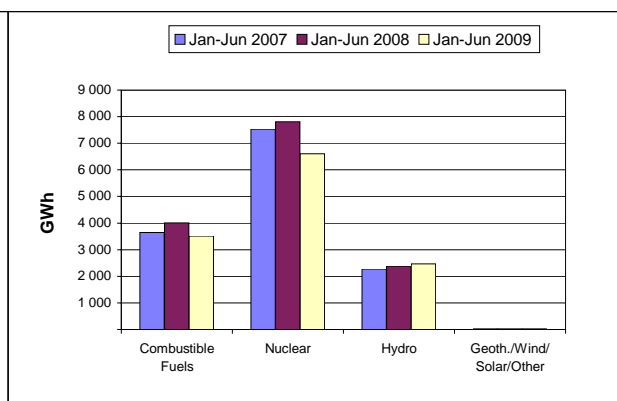
| | Jun-09 | Jun-08 % change | The last 3 months | | | Year-to-Date | | Past Year 2008 |
|--------------------------------|--------------|--------------------|-------------------|--------------|--------------|---------------|---------------|-------------------|
| | | | Mar-09 | Apr-09 | May-09 | Jan-Jun 2009 | % change | |
| + Combustible Fuels | 487 | -11.9% | 536 | 527 | 637 | 3 516 | -12.2% | 7 632 |
| + Nuclear | 1 118 | -0.4% | 1 207 | 1 002 | 929 | 6 604 | -15.4% | 15 405 |
| + Hydro | 391 | 12.4% | 531 | 603 | 414 | 2 471 | 3.8% | 4 183 |
| + Geoth./Wind/Solar/Other | 5 | 0.0% | 5 | 5 | 5 | 30 | 0.0% | 60 |
| = Indigenous Production | 2 001 | -1.4% | 2 279 | 2 137 | 1 985 | 12 621 | -11.3% | 27 280 |
| + Imports | 445 | -13.4% | 853 | 306 | 435 | 3 795 | -23.6% | 9 412 |
| - Exports | 562 | 27.7% | 795 | 564 | 507 | 3 626 | -27.3% | 8 889 |
| = Electricity Supplied | 1 884 | -10.4% | 2 337 | 1 879 | 1 913 | 12 790 | -9.9% | 27 803 |

- Electricity production was 2 001 GWh in June 2009.
 - This was lower by 28 GWh, or 1.4%, compared to June 2008.
 - This was an increase of 16 GWh, or 0.8%, compared to the previous month.
 - Combustible Fuels production showed the most significant percentage change compared to the previous month with a decrease of 23.5%, or 150 GWh.
- Total production for the year-to-date was 12 621 GWh. Comparing this to the same period last year shows that:
 - Total production was lower by 1 601 GWh, or 11.3%.
 - Nuclear production showed the largest percentage change by fuel type, being 15.4% lower.
 - Trade volume decreased by 2 540 GWh, or 25.5%.

Electricity Production Compared to Previous Year



'Year to Date' Comparison of Production by Fuel Type



COUNTRY NOTES:

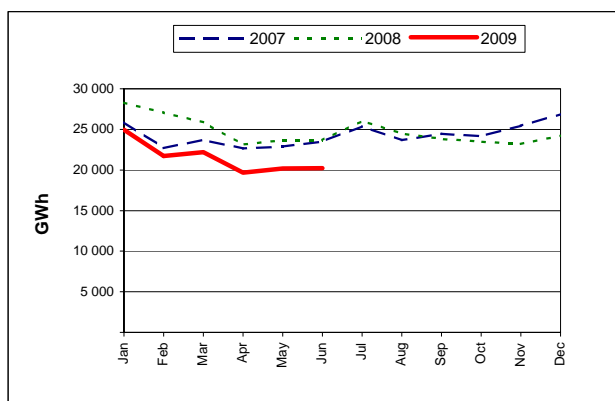
- Net production is estimated from monthly submission of gross production.
- Geoth./Wind/Solar/Other production is estimated by the IEA Secretariat.

SPAIN

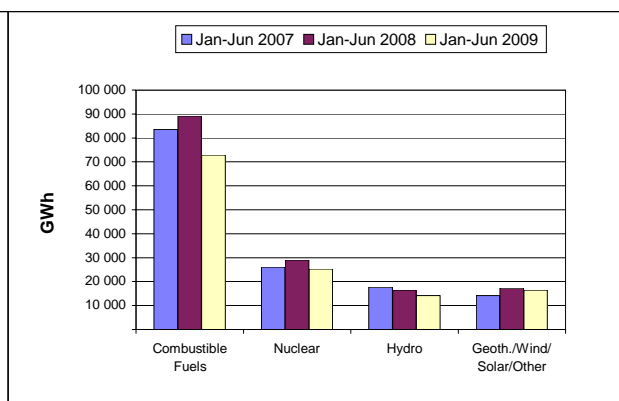
| | GWh | | | | | | | |
|--------------------------------|---------------|--------------------|-------------------|---------------|---------------|----------------|---------------|-------------------|
| | Jun-09 | Jun-08 % change | The last 3 months | | | Year-to-Date | | Past Year 2008 |
| | | | Mar-09 | Apr-09 | May-09 | Jan-Jun 2009 | % change | |
| + Combustible Fuels | 11 846 | -12.9% | 12 568 | 10 990 | 11 648 | 72 915 | -18.3% | 181 406 e |
| + Nuclear | 3 591 | -21.3% | 4 088 | 4 052 | 3 678 | 25 334 | -12.7% | 56 233 |
| + Hydro | 2 055 | -23.2% | 2 794 | 1 876 | 2 144 | 14 212 | -13.3% | 25 560 e |
| + Geoth./Wind/Solar/Other | 2 717 | -4.2% | 2 751 | 2 740 | 2 729 | 16 474 | -4.2% | 34 001 e |
| = Indigenous Production | 20 209 | -14.6% | 22 201 | 19 658 | 20 199 | 128 935 | -15.1% | 297 200 e |
| + Imports | 504 | 47.4% | 739 | 668 | 851 | 3 780 | 33.2% | 5 882 |
| - Exports | 1 329 | -4.8% | 925 | 1 211 | 1 270 | 7 112 | -13.9% | 16 920 |
| = Electricity Supplied | 19 384 | -14.3% | 22 015 | 19 115 | 19 780 | 125 603 | -14.2% | 286 162 e |

- Electricity production was 20 209 GWh in June 2009.
 - This was lower by 3 466 GWh, or 14.6%, compared to June 2008.
 - This was an increase of 10 GWh, or 0.05%, compared to the previous month.
 - Hydro production showed the most significant percentage change compared to the previous month with a decrease of 4.2%, or 89 GWh.
- Total production for the year-to-date was 128 935 GWh. Comparing this to the same period last year shows that:
 - Total production was lower by 22 869 GWh, or 15.1%.
 - Combustible Fuels production showed the largest percentage change by fuel type, being 18.3% lower.
 - Trade volume decreased by 205 GWh, or 1.8%.

Electricity Production Compared to Previous Year



'Year to Date' Comparison of Production by Fuel Type



COUNTRY NOTES:

- Geoth./Wind/Solar/Other production is estimated by the IEA Secretariat.
- Includes the Canary Islands.
- Production and trade data for June 2009 were estimated by the IEA Secretariat.

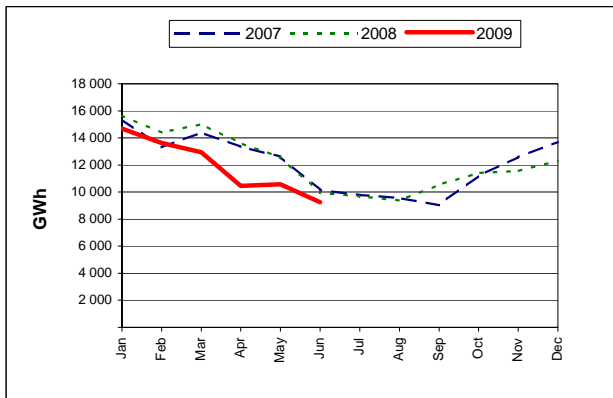
SWEDEN

GWh

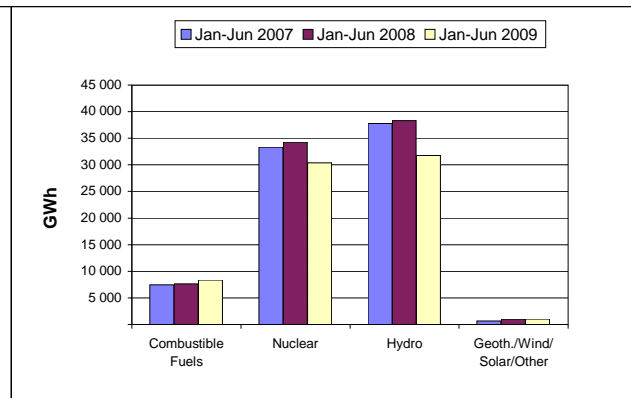
| | Jun-09 | Jun-08 % change | The last 3 months | | | Year-to-Date | | Past Year 2008 |
|--------------------------------|--------------|--------------------|-------------------|---------------|---------------|---------------|---------------|-------------------|
| | | | Mar-09 | Apr-09 | May-09 | Jan-Jun 2009 | % change | |
| + Combustible Fuels | 812 | 4.8% | 1 757 | 1 192 | 1 040 | 8 345 | 9.2% | 14 434 |
| + Nuclear | 4 132 | 12.8% | 5 194 | 4 585 | 4 396 | 30 391 | -11.3% | 61 482 |
| + Hydro | 4 151 | -22.9% | 5 790 | 4 546 | 4 951 | 31 791 | -17.1% | 68 326 |
| + Geoth./Wind/Solar/Other | 165 | 28.9% | 196 | 136 | 188 | 1 027 | 3.9% | 1 972 |
| = Indigenous Production | 9 260 | -6.9% | 12 937 | 10 459 | 10 575 | 71 554 | -11.9% | 146 214 |
| + Imports | 922 | -15.3% | 939 | 968 | 659 | 5 326 | 18.7% | 12 753 |
| - Exports | 835 | -26.8% | 508 | 858 | 1 231 | 5 500 | -47.7% | 14 712 |
| = Electricity Supplied | 9 347 | -5.6% | 13 368 | 10 569 | 10 003 | 71 380 | -5.1% | 144 255 |

- Electricity production was 9 260 GWh in June 2009.
 - This was lower by 689 GWh, or 6.9%, compared to June 2008.
 - This was a decrease of 1 315 GWh, or 12.4%, compared to the previous month.
 - Combustible Fuels production showed the most significant percentage change compared to the previous month with a decrease of 21.9%, or 228 GWh.
- Total production for the year-to-date was 71 554 GWh. Comparing this to the same period last year shows that:
 - Total production was lower by 9 672 GWh, or 11.9%.
 - Hydro production showed the largest percentage change by fuel type, being 17.1% lower.
 - Trade volume decreased by 4 172 GWh, or 27.8%.

Electricity Production Compared to Previous Year



'Year to Date' Comparison of Production by Fuel Type



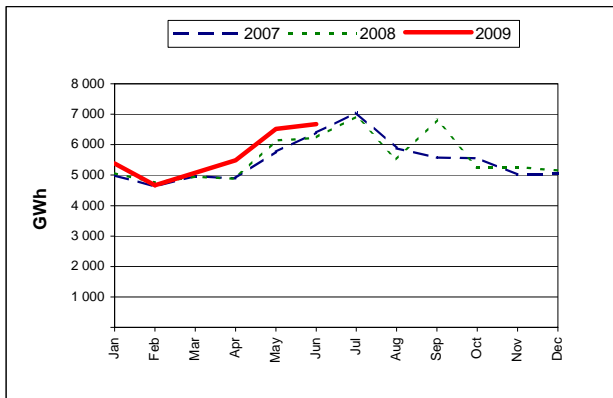
COUNTRY NOTES:

SWITZERLAND

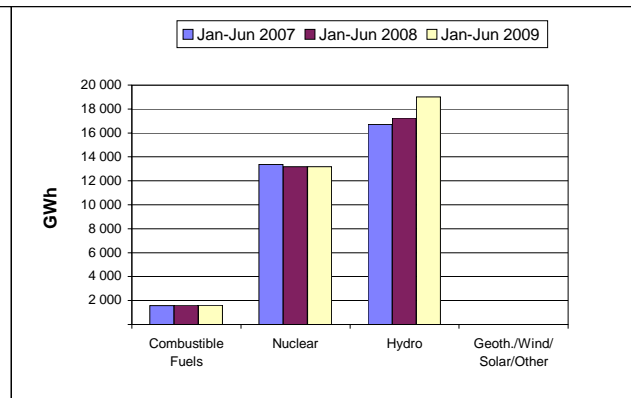
| | GWh | | | | | | | |
|--------------------------------|--------------|-------------|-------------------|--------------|--------------|---------------|-------------|---------------|
| | Jun-09 | Jun-08 | The last 3 months | | | Year-to-Date | | Past Year |
| | | % change | Mar-09 | Apr-09 | May-09 | Jan-Jun 2009 | % change | 2008 |
| + Combustible Fuels | 270 | 1.9% | 269 | 260 | 256 | 1 593 | -0.6% | 3 228 |
| + Nuclear | 1 481 | 1.4% | 2 414 | 2 324 | 2 365 | 13 194 | 0.2% | 26 132 |
| + Hydro | 4 925 | 9.4% | 2 389 | 2 899 | 3 890 | 19 004 | 10.2% | 37 560 |
| + Geoth./Wind/Solar/Other | 3 | -25.0% | 3 | 3 | 3 | 18 | -25.0% | 48 |
| = Indigenous Production | 6 679 | 7.2% | 5 075 | 5 486 | 6 514 | 33 809 | 5.5% | 66 968 |
| + Imports | 2 260 | -7.6% | 2 725 | 2 457 | 2 260 | 15 385 | -3.7% | 31 599 |
| - Exports | 3 306 | 3.1% | 2 298 | 2 893 | 3 306 | 16 309 | 5.9% | 32 736 |
| = Electricity Supplied | 5 633 | 3.0% | 5 502 | 5 050 | 5 468 | 32 885 | 0.8% | 65 831 |

- Electricity production was 6 679 GWh in June 2009.
 - This was higher by 450 GWh, or 7.2%, compared to June 2008.
 - This was an increase of 165 GWh, or 2.5%, compared to the previous month.
 - Nuclear production showed the most significant percentage change compared to the previous month with a decrease of 37.4%, or 884 GWh.
- Total production for the year-to-date was 33 809 GWh. Comparing this to the same period last year shows that:
 - Total production was higher by 1 758 GWh, or 5.5%.
 - Geoth./Wind/Solar/Other production showed the largest percentage change by fuel type, being 25% lower.
 - Trade volume increased by 315 GWh, or 1%.

Electricity Production Compared to Previous Year



'Year to Date' Comparison of Production by Fuel Type



COUNTRY NOTES:

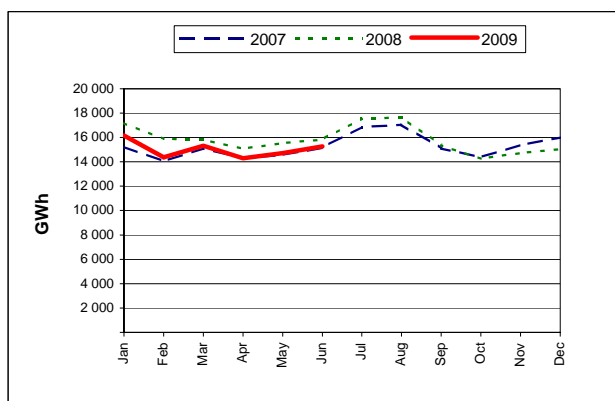
- Geoth./Wind/Solar/Other production is estimated by the IEA Secretariat.
- Does not include Liechtenstein.
- Production and trade data for June 2009 were estimated by the IEA Secretariat.

TURKEY

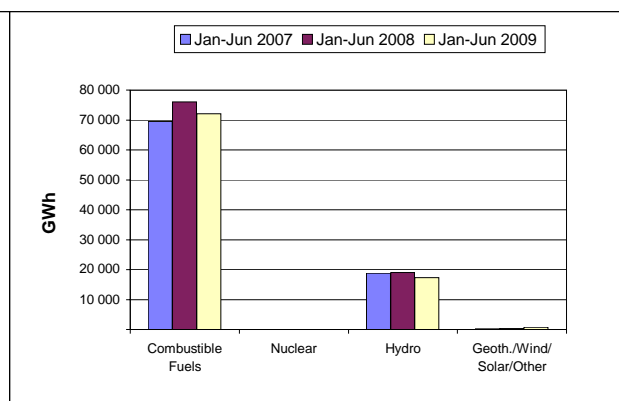
| | GWh | | | | | | | |
|--------------------------------|---------------|--------------|-------------------|---------------|---------------|---------------|--------------|----------------|
| | Jun-09 | Jun-08 | The last 3 months | | | Year-to-Date | | Past Year |
| | | % change | Mar-09 | Apr-09 | May-09 | Jan-Jun 2009 | % change | 2008 |
| + Combustible Fuels | 11 950 | -7.5% | 12 540 | 10 856 | 10 847 | 72 086 | -5.2% | 156 169 |
| + Nuclear | 0 | 0.0% | 0 | 0 | 0 | 0 | 0.0% | 0 |
| + Hydro | 3 181 | 10.6% | 2 694 | 3 331 | 3 747 | 17 326 | -9.2% | 33 037 |
| + Geoth./Wind/Solar/Other | 140 | 118.8% | 100 | 104 | 116 | 723 | 151.9% | 879 |
| = Indigenous Production | 15 271 | -3.7% | 15 334 | 14 291 | 14 710 | 90 135 | -5.5% | 190 085 |
| + Imports | 59 | 22.9% | 60 | 60 | 51 | 352 | -15.8% | 792 |
| - Exports | 107 | 35.4% | 104 | 102 | 105 | 619 | 26.6% | 1 063 |
| = Electricity Supplied | 15 223 | -3.8% | 15 290 | 14 249 | 14 656 | 89 868 | -5.8% | 189 814 |

- Electricity production was 15 271 GWh in June 2009.
 - This was lower by 589 GWh, or 3.7%, compared to June 2008.
 - This was an increase of 561 GWh, or 3.8%, compared to the previous month.
 - Geoth./Wind/Solar/Other production showed the most significant percentage change compared to the previous month with an increase of 20.7%, or 24 GWh.
- Total production for the year-to-date was 90 135 GWh. Comparing this to the same period last year shows that:
 - Total production was lower by 5 289 GWh, or 5.5%.
 - Geoth./Wind/Solar/Other production showed the largest percentage change by fuel type, being 151.9% higher.
 - Trade volume increased by 64 GWh, or 7.1%.

Electricity Production Compared to Previous Year



'Year to Date' Comparison of Production by Fuel Type



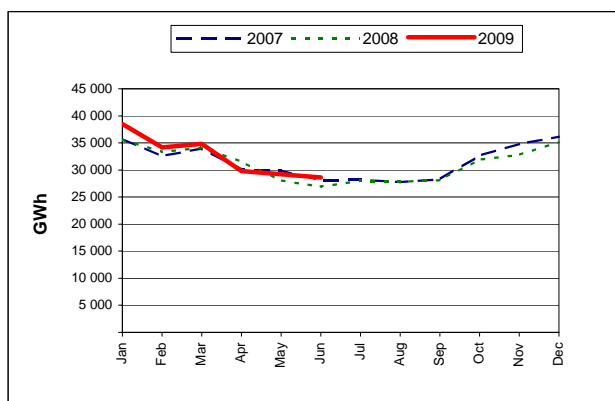
COUNTRY NOTES:

UNITED KINGDOM

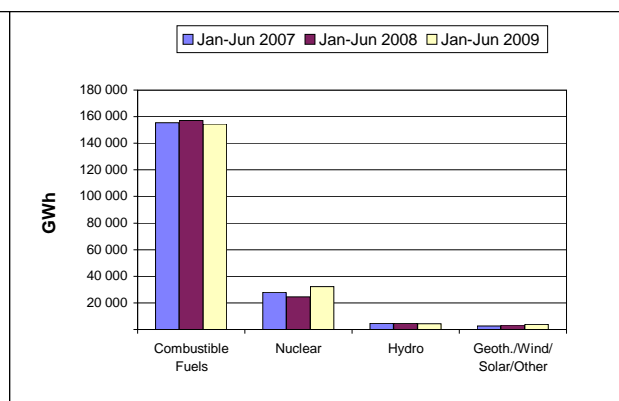
| | GWh | | | | | | | |
|--------------------------------|---------------|--------------------|-------------------|---------------|---------------|----------------|-------------|-------------------|
| | Jun-09 | Jun-08 % change | The last 3 months | | | Year-to-Date | | Past Year 2008 |
| | | | Mar-09 | Apr-09 | May-09 | Jan-Jun 2009 | % change | |
| + Combustible Fuels | 21 740 | -1.1% | 27 052 | 22 573 | 22 913 | 154 608 | -1.7% | 309 529 |
| + Nuclear | 5 764 | 45.8% | 6 201 | 5 913 | 4 955 | 32 212 | 31.9% | 48 089 |
| + Hydro | 465 | 2.9% | 928 | 660 | 672 | 4 403 | -4.7% | 8 918 |
| + Geoth./Wind/Solar/Other | 671 | 13.7% | 652 | 658 | 665 | 3 929 | 13.9% | 7 128 |
| = Indigenous Production | 28 640 | 6.1% | 34 833 | 29 804 | 29 205 | 195 152 | 2.9% | 373 664 |
| + Imports | 769 | -40.2% | 522 | 937 | 1 279 | 4 386 | -31.9% | 12 294 |
| - Exports | 61 | 281.3% | 230 | 85 | 58 | 1 041 | 122.9% | 1 273 |
| = Electricity Supplied | 29 348 | 3.9% | 35 125 | 30 656 | 30 426 | 198 497 | 1.4% | 384 685 |

- Electricity production was 28 640 GWh in June 2009.
 - This was higher by 1 658 GWh, or 6.1%, compared to June 2008.
 - This was a decrease of 565 GWh, or 1.9%, compared to the previous month.
 - Hydro production showed the most significant percentage change compared to the previous month with a decrease of 30.8%, or 207 GWh.
- Total production for the year-to-date was 195 152 GWh. Comparing this to the same period last year shows that:
 - Total production was higher by 5 428 GWh, or 2.9%.
 - Nuclear production showed the largest percentage change by fuel type, being 31.9% higher.
 - Trade volume decreased by 1 481 GWh, or 21.4%.

Electricity Production Compared to Previous Year



'Year to Date' Comparison of Production by Fuel Type



COUNTRY NOTES:

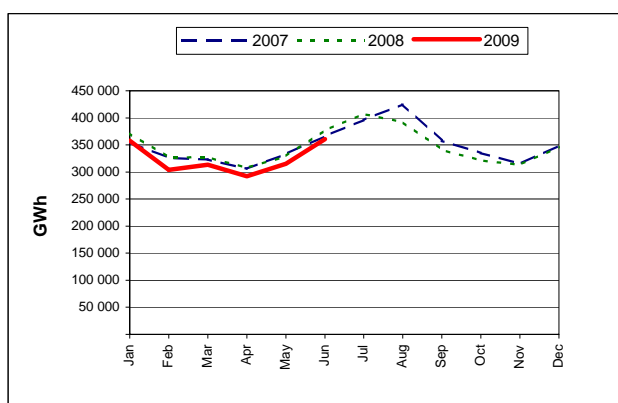
- Geoth./Wind/Solar/Other production is estimated by the IEA Secretariat.

UNITED STATES

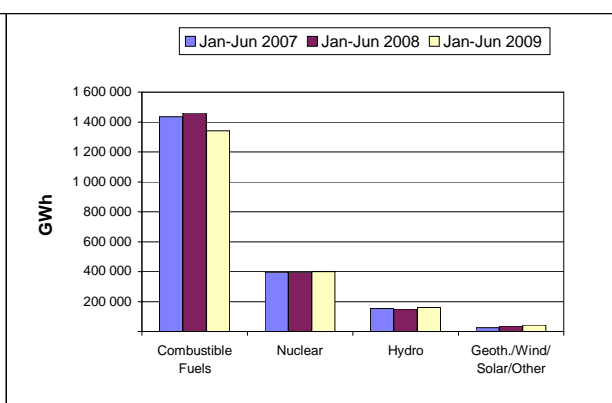
| | GWh | | | | | | | |
|--------------------------------|----------------|--------------|-------------------|----------------|----------------|------------------|--------------|------------------|
| | Jun-09 | Jun-08 | The last 3 months | | | Year-to-Date | | Past Year |
| | | % change | Mar-09 | Apr-09 | May-09 | Jan-Jun 2009 | % change | 2008 |
| + Combustible Fuels | 249 008 | -7.5% | 215 496 | 198 237 | 211 635 | 1 340 507 | -8.1% | 3 012 686 |
| + Nuclear | 70 664 | 0.6% | 66 832 | 59 051 | 65 143 | 399 214 | 1.0% | 807 902 |
| + Hydro | 34 093 | 8.2% | 23 051 | 26 845 | 31 267 | 159 940 | 6.3% | 275 045 |
| + Geoth./Wind/Solar/Other | 6 909 | 8.1% | 7 838 | 8 023 | 7 058 | 42 706 | 20.2% | 67 931 |
| = Indigenous Production | 360 674 | -4.4% | 313 217 | 292 156 | 315 103 | 1 942 367 | -4.8% | 4 163 564 |
| + Imports | 4 752 | -22.4% | 2 963 | 3 306 | 4 146 | 23 356 | -21.9% | 57 022 |
| - Exports | 1 623 | -51.6% | 1 704 | 1 483 | 1 388 | 9 972 | -26.7% | 24 083 |
| = Electricity Supplied | 363 803 | -4.3% | 314 476 | 293 979 | 317 861 | 1 955 751 | -4.9% | 4 196 503 |

- Electricity production was 360 674 GWh in June 2009.
 - This was lower by 16 699 GWh, or 4.4%, compared to June 2008.
 - This was an increase of 45 571 GWh, or 14.5%, compared to the previous month.
 - Combustible Fuels production showed the most significant percentage change compared to the previous month with an increase of 17.7%, or 37 373 GWh.
- Total production for the year-to-date was 1 942 367 GWh. Comparing this to the same period last year shows that:
 - Total production was lower by 97 829 GWh, or 4.8%.
 - Geoth./Wind/Solar/Other production showed the largest percentage change by fuel type, being 20.2% higher.
 - Trade volume decreased by 10 190 GWh, or 23.4%.

Electricity Production Compared to Previous Year



'Year to Date' Comparison of Production by Fuel Type



COUNTRY NOTES:

- Includes the 50 States and the District of Columbia.
- Production data for June 2009 were estimated by the IEA Secretariat.

PRINCIPLES AND DEFINITIONS

General notes

- The objective of the Monthly Electricity Statistics is to provide an early indication of supply side trends in the electricity sector. Therefore, to allow timely publication, the IEA may supplement national statistics with data from other sources.
- Where adequate information is not available from external sources estimates have been made by the IEA. Methodological notes are provided on individual country pages.
- Definitions are consistent with the IEA's "Electricity and Heat" annual questionnaire. Statistics are subject to revision upon official receipt of the annual questionnaire from National Administrations or improved data becoming available.
- Monthly statistics are consistent with those provided in the Quarterly Statistics published by the IEA.
- Electricity production is reported in TWh for the regional aggregates and in GWh for the individual countries. The grouping of electricity generation by source reflects available monthly data and/or small individual quantities.
- Note that historic data is often recalculated. Therefore, the latest publication should be considered most accurate. Regional and organisational summaries may also change based on country recalculations.

Basic definitions

- 'Production' = Net generation excludes power station own use.
- 'Combustible Fuels' = Production from combustible fuels, including combustible renewables and wastes.
- 'Nuclear' = Energy released by nuclear fission or nuclear fusion.
- 'Hydro' = Net generation from hydro facilities including pumped storage production.
- 'Geoth./Wind/Solar/Other' = Generation from geothermal, wind, solar and other renewables not included in combustible fuels.
- 'Indigenous Production' = The sum of electricity production by fuel type.
- 'Imports/ Exports' = Amounts of electricity that have crossed political boundaries of the country, whether customs clearance has taken place or not.
- 'Electricity supplied' = Indigenous production + Imports - Exports.
- 'Year' = Calendar year (January to December) unless otherwise stated.
- 'Year-to-date' = The sum of all months from the start of the calendar year to the latest month.

Publication details and further information

- This publication is released in the middle of each month onto the IEA's Website.
(<http://www.iea.org/Textbase/publications/index.asp>).
- Data should not be reproduced for publication without permission of Energy Statistics Division, IEA.

Comments and queries on the data or on the presentation should be addressed to:
Email: CES@iea.org

For other information please contact the Energy Statistics Division of the IEA by:

Email: stats@iea.org
 Fax: +33 (0)1 40 57 66 49 or
 Phone: +33 (0)1 40 57 66 25
 International Energy Agency
 9, rue de la Fédération, 75739 Paris Cedex 15 - France