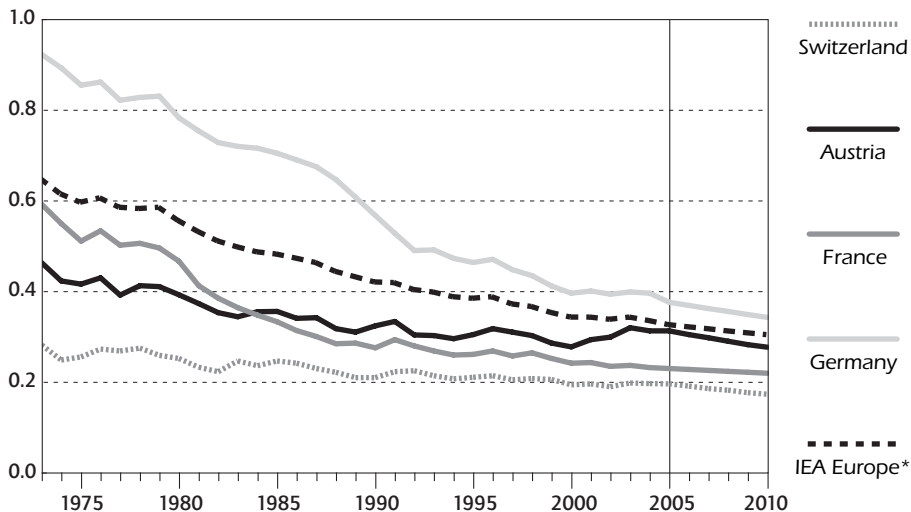


Figure 6

Energy-Related CO₂ Emissions per GDP in Switzerland and in Other Selected IEA Countries, 1973 to 2010

(tonnes of CO₂ per thousand USD GDP using 2000 prices and purchasing power parities)



* excluding Luxembourg and Norway throughout the series, as forecast data are not available for these countries.

Sources: *Energy Balances of OECD Countries*, IEA/OECD Paris, 2007; *National Accounts of OECD Countries*, OECD Paris, 2007 and country submissions.